

**BRITISH
RABBIT COUNCIL**

**BREED
STANDARDS
2021 - 2025**



£5.00

All rights reserved. No part of this publication may be reproduced in any form or by any means – graphic, electronic or mechanical, including photocopying, recording, taping or information storage and retrieval systems – without the prior permission in writing of the publishers.

1st edition 2000

2nd edition 2006

3rd edition 2011

4th edition 2016

5th edition 2021

INTRODUCTION

We welcome you to the world of the EXHIBITION RABBIT.

This Breed Standards Book contains detailed descriptions of all the breeds currently recognised in the United Kingdom by the British Rabbit Council.

The importance of the various characteristics of a breed is shown by the number of points (out of 100) allotted to each. Thus from the breed standard the breeder can picture the ideal specimen, and can judge its quality from an exhibition standpoint.

Many breed standards, for example those of the Dutch and English, have been published for over 100 years. Others are up to 70 years old, and in recent years some 17 new breeds have been standardised.

Standards are revised every five years (the next revision will apply from January 2021). The British Rabbit Council recognises, supports and publishes the standards and in 1994 established a Breed Standards Sub-Committee, which after consultation with breeders & exhibitors approves all new standards.

This book, which has been researched by the Breed Standards Sub-Committee, will be kept up to date when a new breed, or a new colour or pattern of an existing breed is developed, by providing an amendment for insertion into the appropriate section of this book.

We very much hope you find the book interesting and enjoyable, and if you require any information regarding any aspect of the exhibition rabbit hobby, then please call our office on 01636 676042 or email: info@thebrc.org who will be delighted to help.

PART 1

FANCY SECTION

F1	Angora
F2	Dutch
F3	English
F4	Flemish Giant
F5	Giant Papillon (R.V.)
F6	Hare Belgian
F7	Hare Black
F8	Hare Tan
F9	Harlequin
F10	Himalayan
F11	Lionhead
F12	Netherland Dwarf
F13	Polish
F14	Rhineland (R.V.)
F15	Silver
F16	Tan
F17	Thrianta
F18	Tri-Colour Dutch (R.V.)
F19	Tri-Colour English (R.V.)
F20	Miniature Papillon

PART 2

LOP SECTION

L1	Cashmere
L2	Cashmere Miniature
L3	Dwarf
L4	English
L5	French
L6	German
L7	Meissner (R.V.)
L8	Miniature
L9	Miniature Lion

PART 3

NORMAL FUR SECTION

N1	Alaska
N2	Argente Bleu
N3	Argente Brun
N4	Argente Crème
N5	Argente de Champagne
N6	Argente Noir
N7	Argente St Hubert
N8	Beige (R.V.)
N9	Beveren
N10	Blanc de Bouscat (R.V.)
N11	Blanc de Hotot (R.V.)
N12	Blanc de Termonde (R.V.)
N13	British Giant (R.V.)
N14	Californian
N15	Chinchilla
N16	Chinchilla Giganta
N17	Continental Giant Coloured
N18	Continental Giant White
N19	Deilenaar (R.V.)
N20	Fauve de Bourgogne
N21	Fox - Silver
N22	Golden Glavcot (R.V.)
N23	Havana
N24	Hulstlander (R.V.)
N25	Lilac
N26	N Z White, Black, Blue
N27	NZ Red
N28	Perlfee (R.V.)
N29	Pointed Beveren (R.V.)
N30	Siamese Sable
N31	Marten Sable
N32	Sallander (R.V.)
N33	Satin
N34	Satin Miniature
N35	Siberian
N36	Smoke Pearl
N37	Squirrel (R.V.)
N38	Sussex (R.V.)
N39	Swiss Fox (R.V.)
N40	Thuringer (R.V.)
N41	Vienna Coloured (R.V.)
N42	Vienna White (R.V.)
N43	Wheaten (R.V.)
N44	Wheaten Lynx (R.V.)
N45	Marburger Feh (R.V.)
N46	Schwarzgrannen (R.V.)
N47	Sussex Marten (R.V.)

PART 4

REX SECTION

R1 GENERAL STANDARD

R2 SELF

Black
Blue
Ermine
Havana
Lilac
Nutria

R3 SHADED

Sable Siamese
Seal Siamese
Smoke Pearl Siamese
Tortoiseshell

R4 TAN PATTERN

Fawn
Fox
Sable Marten
Seal Marten
Smoke Pearl Marten
Orange
Otter
Tan

R5 AGOUTI PATTERN

Castor
Chinchilla
Cinnamon
Lynx
Opal

R6 OTHER COLOURS

Dalmatian
Harlequin/Magpie
Himalayan
Satin
Silver Seal

R7 ROUGH COATED

Astrex

R8 ROUGH COATED

Opossum

R9 MINI

R10 MINI

Broken Blanket Pattern

SIZE OF RINGS

Size A	Polish.
Size B	Dutch, Himalayan, Mini Rex, Tan, Tri-Colour Dutch.
Size C	Argente Crème, Dwarf Lop, Lionhead, Miniature Cashmere Lop.
Size D	Argente Bleu, Argente Brun, Argente Noir, Argente St Hubert, Beige, Cashmere Lop, Chinchilla, Fox - Silver, Golden Glavcot, Havana, Hulstlander, Lilac, Sable, Miniature Satin, Siberian, Silver, Smoke Pearl, Squirrel, Thrianta, Wheaten.
Size E	Angora, Deilenaar, English, Harlequin, New Zealand Red, Perlfee, Rex, Satin, Schwarzgrannen, Sussex, Swiss Fox, Tri-Colour English.
Size G	Argente de Champagne, Beveren, Blanc de Hotot, Blanc de Termonde, Fauve de Bourgogne, Hare, Marburger Feh, Pointed Beveren.
Size H	Blanc de Bouscat, British Giant, English Lop, Flemish Giant, French Lop, Giant Papillon, Meissner Lop, New Zealand Black, New Zealand Blue, New Zealand White, Vienna.
Size J	Continental Giant.
Size K	Miniature Lop, Miniature Lion Lop, Miniature Papillon.
Size L	Alaska, Californian, Chinchilla Giganta, German Lop, Rhineland, Sallander, Thuringer.
Size X	Netherland Dwarf.

BREED COLOURS & ABBREVIATIONS

Recognised by the British Rabbit Council

Agouti	ag	Lynx	lx
Agouti (St Hubert)	sag	Noir	no
Beige	bei	Nutria	nu
Black	bk	Opal	op
Bleu and blue	bu	Orange	or
Blue-cream	buc	Pale grey	pg
Blue grey	bug	Perlfee	pf
Blue point	bup	Red	rd
Bronze	bz	Sable dark	sabd
Brown and brun	bn	Sable medium	sabm
Brown-grey	bng	Sable light	sabl
Castor	ca	Sallander	sl
Champagne	cm	Seal	se
Chinchilla	ch	Seal point	sep
Chinchilla Giganta	c.gi	Silver blue	silbu
Cinnamon	cin	Silver fawn	silfn
Chocolate	choc	Silver grey	silgr
Chocolate Point	chp	Smoke	sm
Chocolate Tort	chtrt	Smoke pearl	smp
Cream and crème	cr	Sooty fawn	sfn
Dark steel grey	dsg	Squirrel	sq
Deilenaar	de	Steel	st
Fawn	fn	Steel grey	stgr
Gold	go	Sussex cream	sxcr
Golden Glavcot	gg	Sussex gold	sxgo
Grey	gr	Sussex marten	smx
Iron Grey	igr	Thrianta	thr
Hare (red agouti)	hra	Thuringer	thu
Hare (tan)	ht	Tortoishell	trt
Havana	hv	Wheaten	wh
Ivory	iv	White blue eye	bew
Light steel grey	lsg	White red eye	rew
Lilac	li	Yellow	y

BREED PATTERNS & ABBREVIATIONS

Recognised by the British Rabbit Council

Bi-Colour	bic	Himalayan	hi
Blanc de Hotot	bdh	Magpie	mag
Broken	bro	Papillon	pap
Butterfly	bfly	Rhinelande	rh
Dalmatian	dal	Siamese	si
Dutch	du	Tan	tn
English	en	Tri-Colour	tri
Harlequin	hq		

BREED ABBREVIATIONS

Recognised by the British Rabbit Council

FANCY BREEDS

Angora	An
Dutch	Du
English	En
Flemish Giant	FLGi
Giant Papillon	GP
Hare Belgian	BH
Hare Black	BlkH
Hare Tan	TnH
Harlequin	Hq
Himalayan	Hi
Lionhead	Lio
Miniature Papillon	MnPap
Netherland Dwarf	ND
Polish	Pl
Rhineland	Rh
Silver	Sil
Tan	Tn
Thrianta	Thr
Tri-Colour Dutch	TriDu
Tri-Colour English	TriEn

LOP BREEDS

Cashmere	CLp
Cashmere Miniature	MnCLp
Dwarf	DLP
English	ELp
French	FLp
German	GLp
Meissner	MLp
Miniature	MnLp
Miniature Lion	MnLLp

NORMAL FUR BREEDS

Alaska	Al
Argente Bleu	Arbu
Argente Brun	Arbn
Argente Creme	Arcr
Argente Champagne	ArCm
Argente Noir	Arno
Argente St Hubert	ArStH
Beige	Bei
Beveren	Bev
Blanc de Bouscat	BdB
Blanc de Hotot	BdH
Blanc de Termonde	BdT
British Giant	BGi
Californian	Cal
Chinchilla	Ch
Chinchilla Giganta	CGi
Continental Giant Coloured	ConGc
Continental Giant White	ConGw
Deilenaar	De
Fauve de Bourgogne	FdB
Fox Silver	SFx
Golden Glavcot	GG
Havana	Hv
Hulstlander	Hul
Lilac	Li
Marburger Feh	MAR
New Zealand White	NZW
New Zealand Red	NZR
Perlfee	Pf
Pointed Beveren	PBev
Sable	Sab
Sallander	Sl
Satin	Sat
Satin Miniature	MnSat
Schwarzgrannen	SCHW
Siberian	Sib
Smoke Pearl	Smp
Squirrel	Sq
Sussex	Sx
Sussex Marten	SMx
Swiss Fox	SwF
Thuringer	Thu
Vienna Coloured	Vc
Vienna White	Vw
Wheaten	Wh
Wheaten Lynx	WhLx

REX BREEDS

<i>Self</i>	
Black	RxBk
Blue	RxBu
Ermine	RxEr
Havana	RxHv
Lilac	RxLi
Nutria	RxNu
<i>Shaded</i>	
Sable Siamese	RxSSab
Seal Siamese	RxSe
Smoke Pearl Siamese	RxSmp
Tortoiseshell	RxTrt
<i>Tan Pattern</i>	
Marten Sable	RxMSab
Marten Seal	RxMSe
Marten Smoke Pearl	RxMSmp
Otter	RxOt
Orange	RxOr
Fawn	RxFn
Fox	RxFx
Tan	RxTn
<i>Agouti Pattern</i>	
Castor	RxCa
Chinchilla	RxCh
Cinnamon	RxCin
Lynx	RxLx
Opal	RxOp
<i>Other Varieties</i>	
Dalmatian	RxDal
Harlequin	RxHq
Magpie	RxMag
Himalayan	RxHim
Silver Seal	RxSilSe
Satin	RxSat
Astrex	RxAst
Opossum	RxOpp
Mini	MnRx

WEIGHT CONVERSION TABLE

Pounds to Kilograms

lb	kg	lb	kg	lb	kg	lb	kg
2	0.907	2¼	1.020	2½	1.134	2¾	1.247
3	1.360	3¼	1.474	3½	1.587	3¾	1.700
4	1.814	4¼	1.927	4½	2.041	4¾	2.154
5	2.268	5¼	2.381	5½	2.494	5¾	2.608
6	2.721	6¼	2.835	6½	2.948	6¾	3.061
7	3.175	7¼	3.288	7½	3.402	7¾	3.515
8	3.628	8¼	3.742	8½	3.855	8¾	3.969
9	4.082	9¼	4.195	9½	4.309	9¾	4.422
10	4.536	10¼	4.649	10½	4.762	10¾	4.876
11	4.989	11¼	5.103	11½	5.216	11¾	5.329
12	5.443	12¼	5.556	12½	5.670	12¾	5.783
13	5.896	13¼	6.010	13½	6.123	13¾	6.237
14	6.350	14½	6.577	15	6.804	15½	7.030
16	7.257	16½	7.484	17	7.711	17½	7.938
18	8.164	18½	8.391	19	8.618	19½	8.845

CONVERSION TABLE

Inches to Centimetres

Inches	Cms	Inches	Cms
1	2.54	2	5.08
3	7.62	4	10.16
5	12.70	6	15.24
7	17.78	8	20.32
9	22.86	10	25.40
11	27.94	12	30.48
13	33.02	14	35.56
15	38.10	16	40.64
17	43.18	18	45.72
19	48.26	20	50.80
21	53.34	22	55.88
23	58.42	24	60.96
25	63.50	26	66.04
27	68.58	28	71.12
29	73.66	30	76.20

Angora (English)

Ring Size E		Points
1	Wool Quality	30
2	Wool Quantity and length	25
3	Front	10
4	Head and Ears	10
5	Size and Shape	10
6	Feet	5
7	Condition	10
	Total	100

WHITE ANGORA

1. **Wool Quality** - Texture as silky as possible
2. **Wool quantity and length** - Even and full all over and clear to the skin.
3. **Front** - Full and prominent on chest and sides of neck.
4. **Head and Ears** - Broad short head, short well woolled and tufted ears.
5. **Size and Shape** - Round and snowball-like. Weight at 5 months ideally in the region of 2.494kg (5½lb). An adult ideally not to exceed 3.402kg (7½lb). Type and quality always to be taken into account.
6. **Feet** - Thickly covered with long wool, well furnished.
7. **Condition** - Clean, well nourished and well groomed.

Eyes - Ruby, bright and bold.

Legs - Straight and heavily woolled.

Tail - Large and well woolled.

Head - Wide across nostrils, bold appearance, densely furred, wool to be long and thick between and behind the ears.

SERIOUS FAULTS - Narrow wedge head, long plain ears, plain feet, matted coat, coarse coat, bad condition, lop ears.

COLOURED ANGORA

NOTE: The Judges are requested to judge the Coloured Angora to the Breed Standard laid down by the Specialist Club and not to confuse the colours with any other breed standard for short-haired varieties.

Points the same as for Whites except that five points each are deducted from Quality and Quantity of Wool to be allocated to: -

Solid colour – 10 Points

Angoras are unique in the fact that they possess a multi-layered coat. The tips of each new coat are therefore darker than the previous coat, which lightens, as it gains length. This produces BANDING IN ALL COLOURS.

Rabbits should not be excessively penalised for lighter bands of the top colour appearing in the coat, but the more uniform the colour the better. WHITE BANDS are unacceptable, with the exception of the GOLDEN, which is of yellow origin and therefore has a CREAMY-WHITE band at the base of the coat.

COLOURS:

Golden (formerly Golden-Fawn) - Head, feet and tips a rich, clear orange gold. Wool lighter with colour carried down as far as possible shading to a creamy-white base. Belly creamy-white, eyes brown.

Tortoiseshell (Sooty Fawn) - Black mask and feet, wool as for Golden but with Black and Sooty shadings on lower flanks and ears. Belly a creamy white

Chocolate Tortoiseshell - Chocolate mask and feet, wool as for Golden but with Chocolate shadings on lower flanks and ears. Belly a creamy white

Cream - Head and feet cream, wool lighter cream with tips to match the head. Creamy white belly. Blue-grey eye preferred but brown acceptable.

Blue-cream - Mask and feet blue, wool as for cream but with blue shadings on ears and flanks, with the colour extended across belly, a blue tinge to the wool and blue tipping is desirable but NOT essential. Blue-grey eye preferred but brown acceptable.

Sable - light shade - A medium sepia colour similar to fur breed. Ears, face and tail a deep sepia. Body wool shaded from medium sepia on back to lighter on chest and flanks. Undercolour fawn.

Sable - medium shade - As for light sable except for dark sepia colour instead of medium.

Sable - dark shade - Very dark plum brown, can be almost black on mask, in place of sepia. Often mistaken for a smoke, but coat colour of dark sable has distinct rusty tones in the wool. Eyes for all shades to glow ruby red in subdued light but brown eyes acceptable.

Marten Sable - light Shade - A Medium sepia colour similar to fur breed. Ears face and tail a deep sepia. Body wool shaded from a medium sepia to lighter on chest and flanks. Undercolour fawn. The chest, flanks, rump and feet to be well ticked with white hairs, any extension of white ticking over sides and rump to be added beauty and not a fault. (It will be difficult to find the ticking in the longer parts of the coat, so it will not be considered a fault if not seen). Light nape of neck to be confined to the triangle behind the ears, and this should be as small as possible. Eye circles, inside of ears, line of jaw, inside of nostrils, inside feet and legs, belly and underside of tail to be white. White belly can have sepia undercolour.

Marten Sable - medium shade - As for light shade except that medium sepia colour to read rich dark sepia.

Marten Sable - dark shade – As for light shade except that medium sepia colour to read very rich dark plum brown. Darker, almost black colour on face, ears and tail. Coat colour has distinct rusty tones in the wool. Eyes for all shades to be brown and to glow ruby red in subdued light.

Chocolate - Rich chocolate on head, ears, legs and tail. Body lighter shade with tips to match head. Undercolour pale chocolate. Eyes to glow ruby red in subdued light, but brown eyes acceptable.

Smoke - Head and feet black. Wool dark bluish-grey without white base. Tips to match head. Nose and ears to be free of silvering. Eyes blue but brown acceptable.

Blue - Head, feet and ears blue, as dark as possible. Wool blue without white base. Tips to match head. Ears and nose to be free of silvering. Eyes blue-grey.

Lilac – Head, ears and feet dove grey with a very distinct warm tone. Wool pale dove grey, the tips (guard hair) to match the head and ears. Eyes blue or shades of brown from dark to pale ochre, often with a warm glow. Undercolour to match top colour. Nails horn coloured in keeping with the dilute nature.

AGOUTI COLOURS:

Brown-grey - Head, ears and feet wild grey, a mixture of black and gold. Tips to match head, wool colour to match the head with depth of colour and banding essential. Eyes brown. White belly with blue undercolour.

Blue-grey - Head, ears and feet a mixture of blue and cream. Tips to match head, wool colour to match the head with depth of colour and banding essential. White belly with blue undercolour. Eyes blue-grey.

Chinchilla - Head, ears and feet similar to fur breed, a mixture of black and silver. Tips to match head, wool colour to match head with depth of colour and banding essential. White belly with blue undercolour. Eyes blue, brown or brown-grey.

Cinnamon - Head, ears and feet a mixture of chocolate and cinnamon. Tips to match head, wool to match head with depth of colour and banding essential. White belly with or without pale cinnamon under colour. Eyes brown or glowing ruby red in subdued light.

FAULTS - Silvered ears and nose in smokes and blues, putty nose.

SERIOUS FAULTS - White toenails. White patches on any part of the body, but WHITE FLASHES ON UNDER TAIL IN AGOUTI'S ARE NOT A FAULT.

Angora Stud Buck and Brood Doe

		Points
1	Body Coat	15
2	Furnishings	15
3	Head	10
4	Ears	10
5	Body	25
6	Legs and Feet	10
7	Condition	10
8	Carriage	5
	Total	100

1. **Body Coat** – Clipped down to a maximum of 2.54cm (1in), pure colour, fine texture, even and dense all over. A coat of 2.54 – 5.08cm (1-2in) maximum is permissible in the case of a coloured Angora.
2. **Furnishings are** – Head, feet, legs, face, ears and tail.
3. **Head** – Broad, short skull, broad flat nose, large eyes of correct colour, dense crest, long fringe, thickly woolled along line of jaw.
4. **Ears** – Erect, short, tapered, well woolled, fringed and tufted.
5. **Body** – Short coupled, back arched, chest deep, broad and prominent, powerful shoulders and loins of a good size.
6. **Legs and Feet** – Straight, good but not coarse boned, heavily woolled, with short nails.
7. **Condition** – Firm flesh, clean, well nourished and well groomed.
8. **Carriage** – Alert and upstanding, masculine in appearance in the case of a buck.

Weight – Ideally not to be more than 3.402kg (7.5lb)

SERIOUS FAULTS – Narrow wedge head, low head or ear carriage, plain long ears, no furnishings, bad condition.

Dutch

Ring Size B	Points
1 Ears	10
2 Eyes	5
3 Blaze)	
4 Cheeks)	15
5 Clean Neck	10
6 Saddle	10
7 Undercut	10
8 Stops	15
9 Colour	10
10 Shape, Condition & Weight	15
Total	100

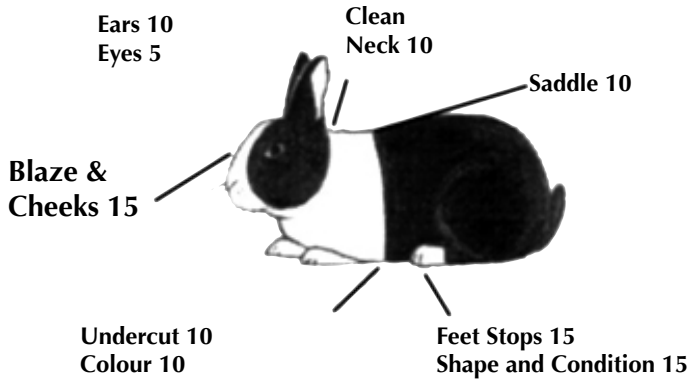
1. **Ears** - Short and strong, not pointed and fairly broad at their base.
2. **Eyes** - Bold and bright, fairly large.
3. **Blaze** - Wedged shaped, carrying up to a point between ears.
4. **Cheeks** - As round as possible and coming as near to the whiskers without touching. Also covering the line of the jawbone.
5. **Clean Neck** - Means free from coloured fur immediately behind the ears.
6. **Saddle** - Is the junction between white and coloured fur on the back. This line to continue right round the animal in an even straight line
7. **Undercut** - Continuation of the saddle. To be as near up to the front legs as possible without touching them
8. **Stops** - White markings on the hind feet about 3.17cm (1¼in) in length and to cut cleanly round the foot in a similar manner to the saddle and undercut.
9. **Colour** - See standard on colours.
10. **Shape** - (Type) and Condition - Compact, cobby, rounded. Shape also means type. Weight and condition also have a bearing on shape or type. The ideal weight of an Adult Dutch should be 2.041-2.26kg (4½-5lb). Hard and firm in flesh. Back well covered with firm flesh. Not baggy in belly. Skin tight; gloss on coat, bright eyes, lively, alert.

DISQUALIFICATIONS - Wrong coloured eyes (see Colour Standard). Discoloured or wall eyes (pale blue iris), specked eyes (pale blue spots or specks on the iris). Coloured fur on the white part or white patches on the coloured parts. Flesh markings (usually on ears). Trimming (attempts to straighten out irregularities, dyeing white spots on coloured fur, etc) Malocclusion and mutilated teeth.

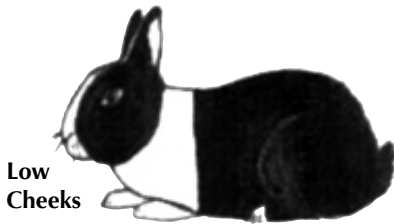
COLOURS:

Black - Deep, solid and carrying well down to the skin, with blue undercolour, the deeper the better. Free from white hairs and mealy or flecking. Eyes dark hazel.

Allocation of the 100 points on a Dutch

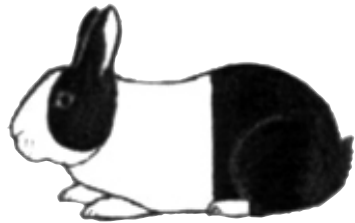


(Fig.2) Narrow Blaze



Cut too far forward
Short stops

(Fig.3)



Reverse markings to
fig.2

Blue - Deep, solid, slate blue, colour to carry well down to the skin. Blue undercolour, the deeper the better. Free from white hairs and flecked or mealy coat. Eyes dark blue.

Chocolate - Deep, solid, dark chocolate colour carrying well down to the skin. Undercolour to match the top colour as near as possible. The deeper the undercolour the better the top will appear. Free from white hairs and mealiness. Eyes chocolate or brown.

Yellow - An even shade of yellow on ears, cheeks, back and upper part of tail, to be carried well down sides, flanks and hind feet. Ideally free from chinchillation with no eye circles. Belly colour can be a lighter shade, toning with the top colour. Undertail to tone with belly. Eyes hazel.

Tortoiseshell - An even shade of orange top colour to carry well down and shading off to a lighter colour to the skin. Ears, belly and under the tail blue-black. Cheeks and hindquarters (flanks) shaded or toned with blue-black. Eyes hazel, the deeper the better.

Steel Grey - Dark steel grey merging to pale slate blue in the undercolour. The whole interspersed with black guard hairs. The medium bright and evenly ticked shade is the one to aim for and the extreme tips of the fur will be tipped with steel blue or grey. The mixture to carry well down the sides, flanks, hind feet. Belly colour will be a lighter shade varying with the top colour, upper part of the tail to match the body colour, underside to tone with the belly colour. Ears to match body. Eyes deep hazel.

Brown Grey - Slate blue at the base followed by a band of yellowy orange then a black line, finishing by light or nut brown tips to the fur. The whole interspersed by black guard hairs. That is the impression gained when the fur of the brown grey is parted. The general impression should be light or nut brown on ears, cheeks, body, hind feet and top of tail, the whole ticked with black hairs. Belly colour and eye circles (small as possible), bright straw colour. A lighter shade permissible under tail. Eyes hazel, deeper the better.

Pale Grey - Top colour biscuit, carrying well down and merging into pale slate at the base. The whole interspersed with black ticking. The general impression should be biscuit ticked with black on ears, cheeks, body and top of tail. Belly colour white with pale slate undercolour. Eye circle white but non-existent or small as possible. Body colour should be present on hind feet. Underside of tail white. Eyes hazel.

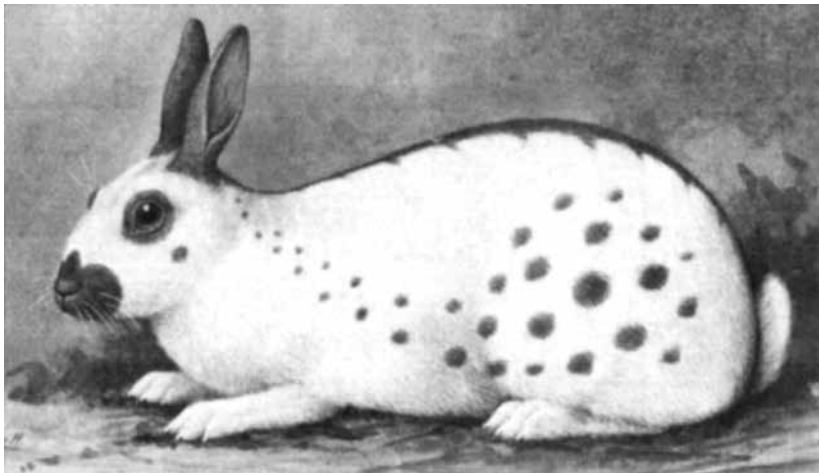
DESCRIPTION OF TERMS USED:

Flecking or Mealiness - Individual hairs more than one colour in self's e.g. blacks should be black at the tip of the fur, that colour carrying down the fur as far as possible then merging into blue. In flecked or mealy exhibits the individual fur would be black, then dark grey then a deeper shade before merging into blue at the base.

Chinchillation - A mixture of colours ticked with a darker shade. Often found on the cheeks of Yellows. The Steel Pale and Brown Grey are chinchillated varieties to a certain extent.

English

Ring Size E		Points
1	HEAD MARKINGS:	
a	Perfect Butterfly Smut	15
b	Circle around eyes	8
c	Cheek spots to be clear from eye circles (<i>either cheek spot missing, deemed to be a serious fault</i>)	5
d	Ears neat and clear from white and not over 10.16cm (4in) long (Ears over 4in long deemed to be undesirable)	5
	Total for Head Markings	33



IDEAL - The markings on both sides of the rabbit to be equally balanced. Chain markings, as shown in the ideal illustration, to commence at the base of the ears in small spots. Increasing in size towards the loins.

2	BODY MARKINGS:	
a	Unbroken Saddle, to be herring-boned and clear in any distinct colour, from base of ears to tip of tail. (A definite break deemed to be a serious fault)	10
b	Body or Loin Markings to be nicely broken up (as shown in the illustration) and not to catch the saddle	12
c	Chain markings, to be as even as possible on each side	12
d	Leg Markings, one distinct spot on each leg, front legs - 5 points back legs - 2 points	7
e	Belly or Teat Spots (<i>there should be six</i>)	6
3	Colours - Black, Blue, Tortoiseshell Chocolate or Grey - no other colour eligible or admissible (<i>all colours to be solid and bright</i>)	10
4	Size and Type 2.721-3.628kg (6lb-8lb) as illustrated (<i>prominent dewlaps and chopped rumps undesirable</i>)	5
5	Condition - exhibits should be fit and alert with short tight coats and firm flesh	5
	Total body markings	67
	Total	100

DISQUALIFICATIONS - Both cheek spots touching eye circles. All exhibits with putty nose. Exhibits which in the judge's opinion are unfairly prepared for exhibition.

Flemish Giant

Ring Size H		Points
1	Colour	30
2	Size & Weight	20
3	Body	15
4	Legs and Feet	15
5	Head & Ears	10
6	Coat & Condition	10
	Total	100

1. **Colour** - Dark steel grey, with even or wavy ticking over the whole of the body, head, ears, chest and feet alike, except belly and under tail which shall be white, upon the surface of the fur. Any grey, steel, sandy or other shade on the belly or under tail, except a streak of grey in each groin, shall disqualify.
2. **Size & Weight** - Bucks shall not be less than 4.974kg (11lb) and doe's not less than 5.44kg (12lb). Size shall be considered irrespective of weight.
3. **Body** - Large, roomy and flat, broad fore and hindquarters. Does shall have a dewlap, evenly carried.
4. **Legs & Feet** - Shall be in length proportionate to body, strong in bone, large and straight. Feet shall be velvety, dark and ticked. Ticking to show when coat rubbed back.
5. **Head & Ears** - Head shall be large, full and shapely. Eyes shall be bold and dark brown in colour. Ears shall be erect. Dark face allowed.
6. **Coat & Condition** - Full short coat, firm in flesh and moderately thick. Free from cold.

INTERMEDIATE FLEMISH

1. To be judged to the Giant Standard
2. Age to be over 6 months old.
3. Weight - Buck to be under 4.989kg (11lb). Doe to be under 5.443kg (12lb).

AMPLIFICATION OF COLOUR - The under should be blue at the base for a little more than a third of the length, then black, merging into a creamy, or bluish white ticking which may be again tipped with black. In even ticked specimens, the mixture should show half grey and half black tipped hairs over half of the body, neck, face and ears, but may be interspersed with longer yet - black hairs, both even and wavy ticking being permissible. The whole should be uniform in colour. The underparts to be white with blue undercolour. Tail should be ticked rather darker on top, white on the underside.

Giant Papillon

Ring Size H		Points
1	Type	20
2	Weight	10
3	Coat	20
4	Pattern on head	15
5	Pattern on body	15
6	Colour	15
7	Condition	5
	Total	100

1. **Type** - Robust, the length being emphasised by the pattern. In comparison with the other giant breeds, the bone is lighter. The muscles are firm, the head is well developed, the ears strong of good substance, well covered with fur and straight, the minimum length being 15cm (5.9in). The spine is gently curved to a full well rounded rump. The back is broad and the thighs well muscled. A small regular dewlap is only permissible in the doe.

2. **Table of points for adult weight:**

kg	5	5.5	6 and over
lb	11.00	12.2	13.4 and over
Points	8	9	10

3. **Coat** - The coat is approximately 2.5cm long (1in), dense and glossy.

4. **Pattern of the head** - This consists of:-

- the butterfly or pattern of the nose; this is well defined, the two wings full, on each side touching only lightly the edges of the lower jaw. The fork in the centre of the nose is lightly rounded.
- the eye circles: each eye is circled by a coloured eye circle, quite regular, which does not touch the other parts of the pattern on either side.
- the cheek spots: are rounded, and situated below the eye circles, without touching them.
- the pattern of the ears: the ears are completely coloured and clean cut at the base.

5. **Pattern of the body** - This consists of:

- The saddle stripe: approximately 3cm (1.2in) wide, it commences at the back of the ears and extends over the whole back to the tail.
- Pattern on the rump: a group of at least 3 spots on each side, towards the rear of the flanks and on the thighs, not touching the saddle. The ideal is 6 to 8 spots each about 30mm (1¼in) in diameter. Markings on the belly and legs are ignored.

6. **Colour** - The base colour is white. All recognised colours are admissible. Eye colour to match that for each recognised colour. The claws are not coloured.

7. **Condition** - The exhibit should be in a perfect state of health and bodily condition, free from all soiling, particularly on the feet, ears and genital parts. The coat should reflect the overall good health of the exhibit, which should appear alert and vigorous.

FAULTS - Body narrow, cobby or coarse; insufficiently muscled, small spots on the head; the butterfly insufficiently defined; the edges of the lips uncoloured or flesh coloured; a small break in the saddle stripe from in front of the shoulder blades to the base of the tail; pattern on flanks too weak, too strong or irregular; one isolated chain spot; the spots on the flanks joined up; large dewlap in does; rear feet not parallel to the body; light soiling of feet; ears and genital organs; bare pads; fur slightly soiled or matted; long toenails; lack of vitality.

DISQUALIFICATIONS - Overall type slender, bony or cobby; body too long and too narrow; putty nose; the lips white; the saddle stripe visibly broken between the shoulder blades and the base of the tail; the absence of one or both cheek spots; the pattern on the head joined up; white patches in the coloured fur; the lower jaw completely covered by the wings of the butterfly; eye circles not closed; less than three spots on any one flank; two or more isolated chain spots; ear length less than 15 cm (5.9in); deformities and mutilations; deformation of the teeth; ears tipped over; feet bowed or bent; crooked tail; any discernible illness or disease; blindness or partial blindness; incorrect eye colour; any parasitic infection; much soiling; matted coat; sore pads (where skin is broken or scabbed); any evidence of irregular preparation for exhibition trimming and dyeing.

Belgian Hare

Ring Size G		Points
1	Type	30
2	Colour	30
3	Feet (colour)	10
4	Ears (colour)	5
5	Ears (length)	5
6	Coat and Condition	15
7	Eyes	5
	Total	100

1. **Type** - Long, fine with muscular flank well tucked up. Back distinctly arched with loins and hindquarters well rounded. Head long and fine, chest tight and free from fullness. Tail straight and carried in line with the backbone. Fore feet long, fine in bone and perfectly straight. Hind feet long, fine and flat. (The term 'feet' to mean from the junction of the fore feet to the body and from the toes on the hind feet to the hock joint). General appearance to be graceful and of a racy alert nature.
2. **Colour** - Rich, deep chestnut red, well extended down the sides. Black ticking of a wavy or blotchy appearance, plentiful on body; chest and face free.
3. **Feet** - Colour to be solid, free from ticking, pale bars, or blotches.
4. **Ears (colour)** - Colour to match body and to be carried well inside at the edges, deeply laced with black at the tips.
5. **Ears (length)** - To be approximately 13cm (5in) in length, well set on and sloping backwards.
6. **Coat and Condition** - The coat to be of good quality, short and of a stiffish texture. Condition firm in flesh and free from any looseness or ungainliness.
7. **Eyes** - Bold and bright with deep hazel iris.

NOTE: In the event of equality in standard of points, preference must be given to the longest and largest specimens. Adult weight approximately 3.62-4.08kg (8-9 lb).

FAULT: White toenails, deduct 10 points for each white toenail.

Black Hare

Ring Size	G	Points
1	Type	30
2	Colour	30
3	Feet	10
4	Ears (Colour)	5
5	Ears (Length)	5
6	Coat & Condition	15
7	Eyes	5
	Total	100

1. **Type** - Long, fine with muscular flank well tucked up. Back distinctly arched with loins and hind quarters well rounded. Head long and fine, chest tight and free from fullness. Tail straight and carried in line with the backbone. Fore feet long, fine in bone and perfectly straight. Hind feet long, fine and flat. (The term "feet" to mean from the junction of the forefeet to the body and from the toes on the hind feet to the hock joint). General appearance to be graceful and of a racy and alert nature.
2. **Colour** - A rich lustrous black to be carried as far down the hair shaft as possible, Under colour dark grey-black. Belly colour to match top.
3. **Feet** - Colour to match body with black toenails. Pads dark grey-black.
4. **Ears (Colour)** - Colour to match body and be carried well inside at the edges.
5. **Ears (length)** - To be approx. 13cm (5in) in length, well set and sloping backwards.
6. **Coat and Condition** - The coat to be of good quality and of a stiffish texture. Condition firm in flesh and free from any looseness or ungainliness.
7. **Eyes** - Bold and bright with deep hazel iris.

NOTE: In the event of equality in standard of points, preference must be given to the longest and largest specimens. Adult weight approx. 3.62-4.07kg (8-9lb).

FAULT: White toe nails a serious fault, deduct 10 points for each white toe nail, brown tinge a fault.

Tan Hare

Ring Size	G	Points
1	Type	30
2	Colour	45
3	Ears length	5
4	Coat and condition	15
5	Eyes	5
	Total	100

1. **TYPE** – Long, fine with muscular flank well tucked up, back distinctly arched with loins and hindquarters well rounded. Head long and fine. Chest tight and free from fullness. Tail straight and carried in line with the backbone. Fore feet long, fine in bone and perfectly straight. Hind feet long, fine and flat. (The term ‘feet’ to mean from the junction of the fore feet to the body and from the toes on the hind feet to the hock joint). General appearance to be graceful and of a racey alert nature.
2. **COLOUR** - No other colour but black and tan. No white or foreign colour amongst either black or tan. The colour both in the black and tan should reach well to the skin.

Distribution of black (body colour) and tan (marking).

The head and cheeks to be black. That same colour reaching right up to nose point, but with a ring of tan around each eye (eye circles). The shoulders (except immediately behind the ears) saddle, back, rump, sides and upper part of tail black. All should be free from brindling, except sides and side of rump which should be thickly laced with long tan hairs (side tickings). The nostrils, jowl, chest, belly, flanks and under part of tail should be one solid mass of deep golden tan, inclining to red or mahogany tint. Brightness of tan to be of greater importance than the actual tint. The tan should be quite clear from any mixture of soot or body colour. The nape, immediately behind the ears should be tan, wide near the ears and tapering to a fine point toward back, thus forming a triangle. This should be large enough to be partly seen even when the rabbit's head is up. From the base of the triangle near the ears the tan should descend and if possible, meet the tan on the tan chest, thus forming a kind of band or collar around the neck. At the root of the ears, viewed from the front two tan spots, known as ‘pea spots’ should be seen, the larger these are the better.

Hind legs - the outer part of leg reaching from foot to rump black, the inner part rich tan. The division between black and tan should form an unbroken line right up the leg, free from raggedness. The tan on the inner side to be quite free from spots, pencilling, bars or black. Toes wholly tan.

Front legs - The lower front part black as free from brindle as possible. The hinder part and toes wholly tan.

3. **Ears** - to be approximately 13cm (5in) in length, well set on and sloping backwards.

Ears - Colour. Outside jet-black inside laced with tan all round. If the whole of the inside are tan so much the better. Ears free from white tips, white hairs or brindling.

4. **Coat and condition.** The coat to be of good quality, short and of a stiffish texture. Condition firm in flesh and free from any looseness or ungainliness.
5. **Eyes.** Bold and bright with deep hazel iris.

NOTE - In the event of equality in standard of points, preference must be given to the longest and largest specimens. Adult weight approximately 3.62-4.08kg (8-9lb).

FAULT - White toenails, deduct 10 points for each white toenail.

Harlequin

Ring Size	E	Points
1	Head	10
2	Ears	10
3	Legs	20
4	Body	20
5	Normal Coat	15
6	Colour	15
7	Normal Type	10
	Total	100

1. **Head** - To be equally divided, one side black and the other side golden orange. Five points allocated to each side.
2. **Ears** - One ear to be black the other golden orange. The black ear on the golden orange side of the face, and vice-versa. Five points allocated to each ear.
3. **Legs** - One front leg golden orange, the other black. One hind leg black, the other golden orange the reverse side to the front. Five points allocated to each leg.
4. **Body** - To be banded in black and orange and as clearly defined as possible. It shall not be considered a fault if the bands are broken at the ventral and dorsal lines. Belly colour may be lightish.
5. **Normal Coat** - Very dense and silky and about 2.54cm (1 in) long.
6. **Colour** - Part dense black, part golden orange, the brighter the better.
7. **Normal Type** - The head to be longish, wide between the eyes and not coarse. The ears to be 10.16-12.7cm (4-5in) long carried upright. Legs to be of medium length and not coarse. The body to be muscular, well proportioned, slightly arched and of firm flesh. The eye colour to be brown, blue or hazel.

Weight - The ideal weight for the Standard Harlequin to be 2.72-3.62kg (6-8lb).

There is no weight disqualification for any age Standard Harlequin rabbit.

COLOURS OF HARLEQUINS AND MAGPIES

Black Harlequin. Dense black and golden orange.

Blue Harlequin. Lavender blue and golden fawn.

Brown Harlequin. Rich dark brown and golden orange.

Lilac Harlequin. Dove grey and golden fawn.

Black Magpie. Dense black and white.

Blue Magpie. Lavender blue and white.

Brown Magpie. Rich dark brown and white.

Lilac Magpie. Dove grey and white.

GENERAL - No one colour to take preference over any other. Normal coat. Rex coat or Astrex coat, each to be of equal merit. The markings to be of paramount importance to other considerations.

FAULTS - Harsh, fly back coat, white hairs or excessive brindling. Underside of tail, light or white is undesirable but only to be deemed a minor fault.

PENALTIES - White marks or patches. Five points each mark or patch.

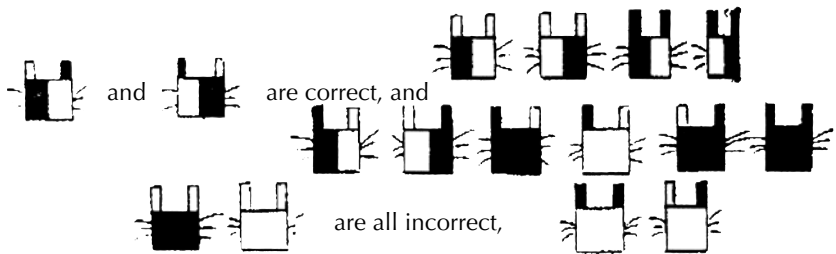
DISTRIBUTION OF COLOURED MARKINGS

We will use the Black Harlequin as an example and will attempt to look at the individual points in detail.

Ten points are awarded to head markings and the Standard is quite clear as to the dividing line straight down the middle of the head.

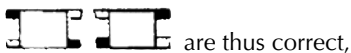
There are also ten points for the ears and the colouring of these should be opposite to the head markings:

Thus:

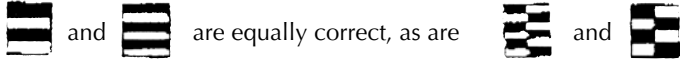


although it is always preferable to have split heads and odd ears, even if only from an attractiveness point of view.

Twenty points are awarded to the legs and all four legs should be opposite colour to each other. Please note that either the head nor the ears have to be opposite to the front feet.



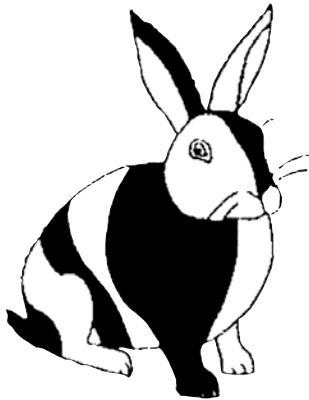
A further twenty points are allocated to the body markings and, although the Standard clearly calls for the colours to be banded alternatively and this is the absolute ideal it also states that the bands may be broken in the centre of the back and belly. The Standard does not define the width of the bands thus both



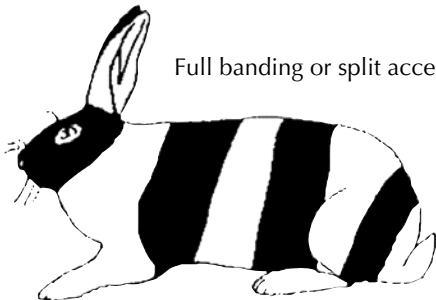
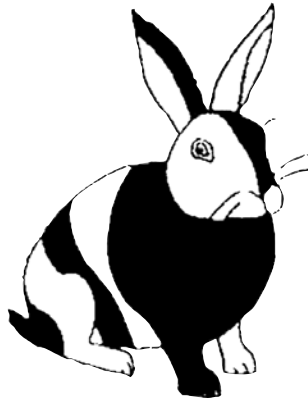
However, the truly banded specimens are true perfection and are certainly more attractive to the eye. Real perfection in all-round markings might be depicted as: :



Ideal Pattern



Split or full chest accepted



Full banding or split accepted



Himalayan

Ring Size B		Points
1	Ears	15
2	Nose	15
3	Front Feet	15
4	Hind Feet	25
5	Eyes	5
6	Tail	5
7	Shape	5
8	Coat	5
9	Weight	5
10	Condition	5
	Total	100

1. **Ears** - Black, short, tapering and well set.
2. **Nose** - Black, even and well up between the eyes.
3. **Front Feet** - Black, long slender and markings well up.
4. **Hind Feet** - Black, to correspond markings well up hocks.
5. **Eyes** - Bold, bright pink.
6. **Tail** - Black, neat.
7. **Shape** - Snaky.
8. **Coat** - Short, fine and pure white.
9. **Weight** - Approx 2.04 kg (4 1/2lb)
10. **Condition**

Weight - Approx 2.041 kg (4½lb).

COLOURS:

Blue Himalayan. Colour to be light medium blue.

Chocolate Himalayan. Colour to be Chocolate as near to the Havana colour as possible.

Lilac Himalayan. Colour to be Lilac (dove grey)

PENALTY POINTS.

Slight eye stain to lose 5 points. Heavy eye stain to lose 10 points.

DISQUALIFICATION - White toenails.

Lionhead

Ring Size C	Points
1 Type	25
2 Mane/Bib	30
3 Coat	25
4 Colour	10
5 Condition	10
Total	100

1. **Type** - The body is to be short, cobby and well rounded; the shoulders and chest broad and well filled, with shoulders matching hindquarters. The depth at the shoulders should be deep enough to allow the animal to show full chest and bib; rounding back to hind quarters that are broad and deep. The whole body should be firm to the touch.

NOTE – Lionheads should be posed with front legs resting lightly on the table. When viewed from the front the stance is high enough to show the full chest, mane and bib, the head should not be pushed or forced down.

Legs of medium length, not too fine in bone, relative to the size of the animal.

Weight - 1.36kg (3lb) - 1.7kg (3lb 12oz)

Head - To be broad, with good width between the eyes. The muzzle should be well developed. The head should be attached to the body with no visible neck..

Ears - Not to exceed 3.5 ins (8.89cm) in length. To be erect and well set, but not necessarily touching, well covered of good substance slightly rounded at the tips, but not furnished as an Angora. When relaxed, ears will be carried in a slight 'V'. Ears should balance with the head and body.

Eyes - Bold and bright, eyes of whites to be red or blue; in all other colours as per Colour Standard.

2. **Mane/Bib** – Are comprised of extended fur which is strong and full of life with a medium soft texture. Guard hairs may be present, but should not create a coarse texture. The mane will form a full circle of fur between 5 to 7cm (2 to 3ins) in length extending to a 'V' at the back of the neck, falling into a fringe around the head, with extended fur on the chest to form a bib. The greatest density possible is desired. The mane may form a cap across the brow, which should enhance the prominence of the mane. The extended fur on the cheeks should extend into the whisker bed but the centre of the forehead below the eye line should be clear of extended fur.
3. **Coat** - The coat to be dense, of medium length, roll back and even all over, the saddle should be free of extended fur, there maybe a flank line of extended fur known as a skirt running down the length of the rabbit, starting at the shoulder running down to the tail and extending in a line into the groin, when the skirt is lifted, a normal short coat should be visible, the skirt should not cover the entire sides, and should not touch the saddle. On

the under 5 month the skirt around the flanks may be thicker than on an adult, but there must be signs of this clearing on the saddle, showing a clear distinction between the developing back top coat and skirt.

The rabbit must not resemble an angora or cashmere in coat quality.

4. **Colour** - All colours as long as they conform to a recognised colour and pattern. It is important to remember when judging colour, that the fur of the mane, bib and skirt will be the undercolour in that area of the coat. The skirt on a banded colour like an agouti- all the bands may be visible.
5. **Condition** - The exhibit should be in perfect health and bodily condition, free from all soiling, particularly on the feet, ears, and genital parts. Free from knots and matting around the mane, bib and skirt. The coat should reflect the overall good health of the exhibit, which should appear alert and vigorous.

FAULTS - Narrow or long in body, chopped off or undercut hindquarters, any specimen that shows raciness. A long narrow head; pointed or narrow muzzle; low head set; ears too long, ears that exceed 3.5ins (8.9cms) in length or do not balance with the head or body (an unbalanced rabbit would be penalized even if its ears are not over 3.5ins) . Ears that are pointed, lack furring, or do not balance with the head or body, or that are heavily furred more than half way up the upper ear. A mane that lacks density or balance. Extended fur on the face below the eye line. In an under five month exhibit where there is no distinction / definition of the back coat, (no signs of the baby coat starting to clear).

DISQUALIFICATION – Malocclusion Wall Eye, putty nose, incorrect coloured toe nails. Furnishing on top of the ears like an Angora. Lack of mane or bib. Extended fur in the saddle area of an Adult. In an under 5 months any exhibit that resembles an Angora or Cashmere in coat type and quality. Heavy soiling. Knots and matting. Adults over 1.7kg (3lbs 12oz) or under 3.36 kg (3lbs) in weight.

F12

Netherland Dwarf

Ring Size X	Points	
1	Body	30
2	Ears	15
3	Head	15
4	Eyes	5
5	Colour	15
6	Coat	10
7	Condition	10
	Total	100

1. **Body** - Short, compact, cobby, full chested and wide shouldered. Devoid of raciness. Front legs short and straight.
2. **Ears** - Erect, of good substance, well furred, slightly rounded at tips. Desired length 5cm (2in).
3. **Head** - Round, broad skull.
4. **Eyes** - Round, bold, bright and of good colour.
5. **Colour** - Accept any colour so long as it conforms to the normal pattern of accepted colours of other breeds.
6. **Coat** - Soft, short, dense, rollback.
7. **Condition** - Firm in flesh, good coat, free from any disease.

WEIGHT:

Disqualification – over 1.134kg (2½lb) Adult. Under 5 month dwarfs over 2lbs (0.907kg).

FAULTS: Narrow shoulder; ears not erect, bent or over length, narrow face, white hairs, white toe nails in coloured rabbits, ticking on shaded rabbits and black hairs in blues, fly-back coat.

DISQUALIFICATIONS: Racy type, crooked legs, odd coloured, wall or speck eyes, white patches, white armpits, putty nose.

Young rabbits over 0.907kg (2lb) (but if the exhibit in the opinion of the judge is over developed for the age of the class it should be disqualified irrespective of weight). Overgrown or mutilated teeth, running eye(s). Not in a fit condition of health to be judged.

COLOURS:

SELFS:

White - As pure a white as possible, creamy or yellow tinge a fault. Eye colour ruby red OR rich dark blue.

Black - rich lustrous black, slate blue undercolour, brown tinge a fault.

Blue - A clear, bright, medium shade of blue (not lavender) throughout, from tip of fur to skin.

Brown - A rich dark chocolate, colour going well down the fur with a pearl-grey undercolour.

Lilac - A pinky dove-grey throughout from tip of fur to skin. Bluish tinge a fault.

Red – Top and Belly colour - topcolour intense orange/red extended brilliantly over the whole body without visible change towards the belly colour. Belly colour and underside of tail slightly matt. Colour to be free from ticking. Eye colour brown. Nails to be dark horn colour. Whiskers must show an orange pigment. Undercolour, the intensively orange/red undercolour should stretch right down to the skin. The further the undercolour stretches the better.

SHADED

Sable (Siamese) Medium - To be a very rich sepia on ears, face, back and outside of legs and upper side of tail, the saddle colour shading off to a considerable paler colour on flanks and belly, the dark face colour to shade off from eyes to jowl to blend with the chest and flanks, all blending to be gradual, avoiding any blotches or streaks and consisting of a soft and varied diffusion of sepia shadings. The dark colour on back to extend from head to tail. The chest to be of the same colour as flanks and the whole fur to be absolutely free from white hairs. The undercolour to match the surface colour as closely as possible, following the varied shadings throughout.

Sable (Siamese) Light - As **medium**, but colour to be 'Rich Sepia'.

Sable (Siamese) Dark - As **medium**, but colour to be 'Very Rich Dark Sepia'.

NB The main difference in the three colours is the width of saddle in tone and intensity of Sepia colour.

Smoke Pearl (Siamese) - The saddle to extend from nape to tail to be smoke in colour, shading to pearl grey beige on flanks, chest and belly and to be totally free from white throughout. Head ears, feet and upper side of tail to match saddle as near as possible. All shading to be gradual avoiding blotches or streaks, general undercolour to match surface colour as closely as possible following the varied shadings throughout.

Seal Point - A rich dark sepia brown on ears, nose, feet and tail. Shading to be a lighter colour on the body. Eye colour to be dark brown

Blue Point – Cream body with a blue mask, ears, feet, tail and shading on the lower rump and haunches, which blends into the body colour of cream on the saddle.

Chocolate Point – Cream body with a chocolate mask, ears, feet, tail and shading on the lower rump and haunches, which blends into the body colour of Cream on the saddle.

Pointed faults – Blotchy colour on body. Body colour too light or too dark so as to lose the decided contrast between the body colour and the marking colour

Tortoiseshell (formerly) 'Madagascar' or 'Sooty Fawn' - Rich orange saddle, gradually shading to a blue black on the flanks, haunches and belly, 'Points' bluish-black. Top colour to go well down the fur with a bluish-white undercolour.

Chocolate Tortoiseshell - An even shade of orange top colour to carry well down and shading off to a lighter colour to the skin. Ears, belly and underside of tail - light chocolate brown. Cheeks and hind quarters (flanks) shaded or toned with light chocolate brown. Eyes brown.

AGOUTI PATTERNED

Agouti - A rich chestnut shade with black ticking over an intermediate orange band and a dark slate blue undercolour. Ears laced black. Eye circles, underside of tail and belly to be white with slate undercolour.

Opal - Top colour pale shade of blue with a fawn band between this and a slate blue undercolour. Ears laced blue. Eye circles underside of tail and belly to be white with slate undercolour.

Lynx - Orange - shot - silver. Intermediate colour to be bright orange clearly defined on white undercolour. Tips of fur silver, belly, eye circles, inside ears and underside of jowl white. Chest to match flanks. Serious faults, bluish tinge on top, blue undercolour.

Chinchilla - To resemble the normal chinchilla the undercolour to be dark slate blue at base, intermediate portion pearl (slate to be definitely wider than pearl) with black narrow line edging, pearling to be clearly defined, top grey, brightly ticked with black hairs, either even or wavy ticking admissible, neck fur lighter in colour than body but strictly confined to nape; flanks and chest ticked with uniform shade of pearl slightly lighter than body; eye circles light grey - pearl, well defined, ears laced with black.

Squirrel - A sparkling blend of blue and white with blue ticking over an intermediate pearly white band with a light slate undercolour. Ears laced blue. Eye circles underside of tail and belly to be white with light slate undercolour.

Cinnamon - A rich cinnamon colour with a brown ticking over an intermediate orange band and lilac undercolour. Eye circles underside of tail and belly to be white with a lilac undercolour.

Red Agouti - A rich red chestnut colour, much deeper in colour than the normal agouti body colour as agouti. Body colour as Agouti but with deep orange/red banding. Ears laced black. Toe nails to be very dark horn colour (near black)). Belly colour cream to sand red, blue undercolour to belly to be treated as a fault, except in the groin.

TAN PATTERNED

Tan - Body colour to be either black, blue, chocolate or lilac and to go down the fur as far as possible with undercolour of appropriate self-colour. Belly, chest, eye circles, inside of ears, underside of jowl and tail and triangle to be rich tan. Blue undercolour to belly to be treated as a fault except in the groin. Face and outside of ears to match body colour.

Fox - Body colour to be black, blue, chocolate or lilac and to go down the fur as far as possible with undercolour of appropriate self-colour. Chest, flanks and feet to be well ticked with white guard hairs. Eye circles, inside of ears, underside of jowl and tail, belly and triangle to be white.

Sable Marten Medium - To be very rich sepia on back, ears face and outside legs, and upper side of tail, the saddle colour shading off to a paler colour on flanks, the dark face colour to blend with chest and flanks, all blending to be gradual avoiding any blotches or streaks and consisting of a soft and varied diffusion of sepia shadings, the dark colour on back to extend from nape of neck to tail, the chest, flanks, rump and feet to be well ticked with longer white hairs, white hairs or any extension of white ticking over sides and rump to be considered an added beauty and not a fault, but ears and saddle to be free of white hairs, the light nape of neck to be confined to a triangle

behind the ears and to be as small as possible; eye circles, inside of ears, line of jaws, belly and underside of tail to be white. General undercolour to match surface colour as closely as possible following the varied shadings throughout.

Sable Marten Light - As medium but colour to be rich sepia.

Sable Marten Dark - As medium but colour to be very rich dark sepia.

Smoke Pearl (Marten) - The saddle to extend from nape to tail, to be smoke colour, shading to pearl grey beige on flanks and chest. Head, ears feet and upper side of tail to match saddle as near as possible. Chest, flanks, rump and feet to be well ticked with longer white hairs, the light nape of the neck to be confined to the triangle behind the ears and to be as small as possible. The eye circles, inside the ears, line of jaw, inside nostrils, inside of legs and feet, belly and underside of tail and triangle to be white. The colour under white belly fur should be fawn.

Otter - Colour black, blue, chocolate or lilac, uniform colour to cover back and sides. The underbody or belly to be creamy white also under the chin and tail. A tan border to divide the white and colour and encircle nostril and under chin. A mixture of body colour and tan covers feet. Tan ticking to the chest, flanks and rump, extended ticking to be an added beauty not a fault. Tan eye circle and nape of neck. The ears to be as body colour bordered on outside with tan which covers inside of ears. Fault: a distinct lack of tan from proper parts.

OTHER VARIETIES

Orange - Bright orange saddle shading down the flanks. Colour to go well down the fur with a white undercolour. Chest to match flanks. Eye circles, inside of ears, underside of jowl and tail, and belly to be white.

Fawn - Warm fawn saddle shading down the flanks. Colour to go well down the fur with a white undercolour. Chest to match flanks. Eye circles, inside of ears, underside of jowl and tail and belly to be white.

Steel - To be bright steel throughout. Head, feet ears and belly to match body colours. Colour to be as free as possible from a brown tinge. Undercolour, dark slate, carried well down to the skin, with no trace of a grey or yellow band. Under colour of tail can be lighter. Faults: band in undercolour. Feet and ears not matching body colour. Barred feet.

Himalayan - Distribution of colouring as for the normal Himalayan rabbit. Ears black, nose black, even and well up the eyes. Front feet black and markings well up. Hind feet black to correspond with markings well up the hocks. Tail Black. The Himalayan Netherland Dwarf is recognised in all four colours, namely Black, Chocolate, Blue and Lilac.

Harlequin – Head to be equally divided, one side black one side golden orange. Ears one ear to be black and the other golden orange. The Black ear on the golden orange side of the face, and vice versa. Legs one front leg golden orange, the other black. One hind leg black the other golden orange the reverse side to the front. Body to be banded in black and orange and clearly defined as possible. It shall not be considered a fault if the bands are broken at the ventral and dorsal lines. Belly colour may be lightish. Colour, part dense black, part golden orange the brighter the better. The Harlequin Netherland Dwarf is recognized in all four colours namely Black, Brown, Blue and Lilac.

Magpie – As Harlequin but the second colour is white rather than orange. The Magpie Netherland Dwarf is recognized in all four colours namely Black, Brown Blue and Lilac .

ANY OTHER COLOUR - Accept any other colour recognized by the BRC so long as it conforms to the normal pattern of accepted colours of other breeds.

Polish

Ring Size A		Points
1	Type	25
2	Coat	25
3	Colour	15
4	Ears	15
5	Eyes	15
6	Condition	5
	Total	100

1. **Type** - The Polish is a miniature, fine-boned rabbit with a fly back coat, the essence of the Polish is all round balance. The exhibit should be narrow in shoulder, relative to other breeds, and much is made of the way in which the Polish is posed or stood. Ideally in this position, when viewed from the side, the front legs, chest through the head and ears should form a vertical line and at the same time the back should arch in a quarter circle from the back of the neck to the tail, with the belly and chest well tucked up. The head should be well rounded although not necessarily as bold in does. The ears should be carried erect and should be roughly the same length as the distance from the base of the ears to the nose although again the overall balance of the exhibit is the important factor. The Polish should weigh a maximum of 1.134kg (2½lb)
2. **Coat** - The construction of the hair shaft to be short and fine to lie very close to the body. When coat is stroked in the reverse it should sharply fly back to its original position with a degree of density.
3. **Colour** - Pure white with Red or Blue eyes, other as per the normal colour depicted.
4. **Ears** - Set well together carried erect on top of the head, well covered and rounded when viewed from the front or side. To touch all the way up without showing a flange when presented. The length to be in keeping with the overall balance of the exhibit. The colour to match the body where appropriate, otherwise to pattern.
5. **Eyes** - Bright and very bold, well positioned on upper side of head. The colour in Red Eyed Whites to be as near blood red as possible and in Blue Eyed Whites to be as deep a blue as possible. Other colours as per the normal colour of the exhibit depicted.
6. **Condition** - The exhibit should be in a perfect state of health and bodily condition free from all soiling. The coat should reflect the overall good health of the exhibit, which should appear alert, sprightly and vigorous.

FAULTS - Roll back coat, bowed ears or pale eyes. White toenails on any exhibit other than Red Eyed Whites or Blue Eyed Whites. Ears out of proportion with the body.

DISQUALIFICATIONS - Exhibits over 1.134kg (2½lb). Odd colour, wall or speckled eyes. White armpits, putty nose or white patches on a coloured exhibit.

COLOURS:

GROUP 1 - SELFS:

White - As pure as possible, the eye colour to be as near blood red or dark blue as possible.

Black - A rich lustrous black with slate blue under colour. A brown tinge to be regarded as a fault.

Blue - A clear bright blue (not lavender) from tip of fur to skin.

Brown - A rich dark chocolate, the colour to go well down the fur with a pearl grey under colour.

Lilac - A pinky dove grey throughout from tip of fur to skin. A bluish tinge to be regarded as a fault.

GROUP 2 - SHADED SELFS:

Sable Siamese - As normal Siamese Sable

Smoke Pearl Siamese - As normal Smoke Pearl Siamese

GROUP 3 - AGOUTI PATTERN:

Agouti - A rich chestnut shade with black ticking. The under colour to have an intermediate orange band with a dark slate under colour. The underside of the tail and the belly to be white with a slate under colour.

Red Agouti - A rich deep chestnut red shade with black ticking. The under colour to have an intermediate orange band with a dark slate under colour. The underside of the tail and the belly to be cream with a slate under colour.

Opal - The top colour to be a pale shade of blue with a fawn band between this and a slate blue under colour. The underside of the tail and the belly to be white with a slate blue under colour.

Lynx - As the Lynx Rex.

Chinchilla - As the normal Chinchilla.

Squirrel - A Sparkling blend of blue and white with blue ticking over an intermediate pearly white band with a slate blue under colour. The underside of the tail and the belly to be white with a light slate under colour.

Cinnamon - As Cinnamon Rex.

GROUP 4 - TAN PATTERN:

Tans - As normal Tan.

Foxes - As normal Fox.

Sable Marten - As normal Sable Marten.

Smoke Pearl Marten - As normal Smoke Pearl Marten.

Otter - As Otter Rex.

GROUP 5 - MARKED:

Himalayan - As normal Himalayan.

GROUP 6 - OTHER COLOURS:

Orange - Bright orange saddle shading down from the flanks. The colour to go well down the fur with a white under colour. The chest to match the flanks. The eye circles, inside of ears, underside of jowl, tail and belly to be white.

Fawn - A warm fawn saddle shading down the flanks. The colour to go well down the fur with a white under colour. The chest to match the flanks. The eye circles, inside of ears, underside of jowl, tail and belly to be white.

Tortoiseshell (or Sooty Fawn) - A rich orange saddle gradually shading to blue/black on the flanks, haunches and belly with points bluish/black. The top colour to go well down the fur with a bluish white under colour

Steel - To be bright steel throughout. Head, feet, ears and belly to match body colours. The colour to be as free as possible from a brown tinge. The under colour to be dark slate with no trace of a grey or yellow band.

GROUP 7 - ANY OTHER VARIETY:

To follow normal pattern.

Rhinelanders

Ring Size L		Points
1	Type & Body Shape	20
2	Weight	10
3	Fur	20
4	Head Markings	15
5	Body Markings	15
6	Colour	15
7	Condition	5
	Total	100

- Type & Body Shape** - The body shape is similar to the barrel shape, but with an even back line and well rounded rear. The head is strong and set close to the body. The ears are of good structure and correspond in their length to the body size. The legs are of medium length. A small well formed dewlap is permissible in older does.
- Weight** - Index for weight evaluation.

kg	2.75	3.25	3.75 - 4.50 maximum
lbs	6.0	7¼	8¼- 10
points	8	9	10
- Fur** - The fur is silky, even and not too long in the guard hairs.
- Head Markings** - The head markings consist of well shaped butterfly with full wings which narrowly edge the lower jaw. Closed eye circles. Free standing oval or round cheek spots. Sharp clean ear roots. In all head markings, both colours must be present with the exception of cheek spots which may be of one colour.
- Body Markings** - From the neck down to the tip of the tail there is an even broad line (saddle), (approx. 2cm) The side patches are evenly distributed on both sides of the flanks and thighs and there must be at least 6-8. In the body markings both colours singularly or together will always be present.
- Colour** - Base colour white to the skin, marking colours black and yellow are pure and strong and giving a mosaic like effect. Eyes are brown, nails colourless.
- Condition** - See general faults and disqualifications.

FAULTS - including - Body shape, fur and colour, pointed and unsightly butterfly, unclean head. An interruption of the saddle from neck down to the tip of the tail. Areas of the butterfly failing to meet the jawline. Uneven saddle. Tendency to chain marking. Washed out, slightly interspersed marking colour. White patches inside markings. Uneven eye circles, coloured nails.

DISQUALIFICATION - Body shape, fur and colour, incomplete or closed butterfly at lower jaw. Connected head markings. Eye circles not closed, white patches on the ear. Noticeably visible interruption in the saddle from neck down to the tip of the tail. Markings completely touching the saddle. Less than three side patches on one side, a visible chain. Single coloured sides with the exception of the cheek spots, sooty fawn coloured markings, complete absence of the jowl line.

Silver

Ring Size D		Points
1	Colour - See standard on all four colours	25
2	Evenness of Silvering	20
3	Silvering	15
4	Coat	15
5	Ears & Eyes	10
6	Condition & Shape	15
	Total	100

1. COLOURS:

Grey - Body colour, a rich black, the undercolour to be blue-black and carried down to the skin.

Fawn - Body colour, a deep bright orange with undercolour of the same shade carried down to as near the skin as possible.

Brown - Body colour, a deep rich chestnut, the undercolour to have a top band of the same shade, the base to be a deep blue-black to the skin.

Note: Browns to have evenness of mixing i.e. black, silver and chestnut.

Blue - Body colour, dark slate blue, carried down to the skin.

2. **Evenness of Silvering** - Throughout, including head, feet, ears and chest.
3. **Silvering** - To be bright & sharp.
4. **Coat** - To be short, full and fly back.
5. **Ears & Eyes** - Ears to be neat and well set, Eyes to be bold and bright.
6. **Condition & Shape** - Moderate length of body, inclined to cobbiness with slightly arched back. To have a body of firm flesh. The fly back coat to have a bright sparkling top colour.

Weight - Ideal weight to be between 2.267-2.72kg (5-6lb)

DISQUALIFICATION - White toenails.

Tan

Ring Size B		Points
1	Black, dense and sound	10
	Tan, deep and rich	15 25
2	Distribution	
	Triangle	5
	Feet, hind	10
	Feet front	5
	Chest, flanks and belly	10
	Nostrils, eyes and jowl	5
	Ears, outer and inside margin	5 40
3	Ears, short and black	10
4	Shape Dutch	10
5	Eye, full	5
6	Condition	10
	Total	100

- Colour** - No other colour but black and tan. No white or foreign colour amongst either black or tan. The colour both in the black and tan should reach well to the skin.
- Distribution of Black (body colour) and Tan (markings)** - The head and cheeks to be black, that same colour reaching right up to the nose point, but with a ring of tan round each eye (eye circles). The shoulders (except immediately behind the ears), saddle, back, rump, sides and upper part of tail black. All should be free from brindling, except sides and sides of rump, which should be thickly laced with long tan hairs (side ticking). The nostrils, jowl, chest, belly, flanks and under part of tail should be one solid mass of deep golden tan, inclining to red or mahogany tint, brightness of tan to be of greater importance than the actual tint.

The tan should be quite clear from any mixture of soot or body colour. The shoulders or neck immediately behind the ears should be tan, wide near the ears and tapering to a fine point towards the back, thus forming a triangle. This should be large enough to be partly seen, even when the rabbit's head is up. From the base of the triangle near the ears, the tan should descend and if possible meet the tan on the tan chest, thus forming a kind of band or collar around the neck. At the root of the ears, viewed from the front, two tan spots, known as "Pea Spots" should be seen, the larger these are the better.

Hind legs - Rather short and of medium thickness. The outer part of leg reaching from foot to rump, black, inner part rich tan. The division between black and tan should form an unbroken line right up the leg, free from raggedness. The tan on the inner side to be quite free from spots, pencilling, bars or black. Toes wholly tan.

Front legs - The lower front part, black as free from brindle as possible. The hind part and toes wholly tan.

3. **Ears** - Short, fine but not papery, carried erect and close together. Outside jet-black, well covered with fur. Inside laced with tan all round (if the whole of the insides are tan, so much the better). Ears free from white tips, white hairs or brindling.
4. **Shape** - The shorter and more cobby in build the better. Viewed from the side, the body top line should gracefully and moderately arch from the nape of the neck to the base of the tail.

Weight of adult - 2.041kg (4½lb) approximately

5. **Coat** - Fairly short, laying well to the body with a silky feel to the hand

Blue and Tan - With the difference in colour the previous description answers for the Blue and Tan. It may be taken that the medium tint of blue is preferable, but soundness of colour is to be considered of greater importance than actual tint.

Chocolate and Tan - With the difference in colour the above description answers for the Chocolate and Tan. The chocolate colour to be uniform, deep, rich chocolate brown.

Lilac and Tan - With the difference in colour the above description answers for the Lilac and Tan. The lilac to be of a medium dove grey with a pink tint veiling the surface.

PENALTY POINTS

- | | |
|--|----|
| 1. Brindle white or grey hairs amongst body colour(except on sides of body, where long tan hairs should be plentiful). | 5 |
| 2. White ear edges, badly covered ears, white or brindled hairs on outside of ears | 5 |
| 3. Smudgy nose point | 5 |
| 4. Brindled front legs | 5 |
| 5. Black or blue bars, pencilling or spots on tan or hind legs and indistinct line of division along same | 10 |

DISQUALIFICATIONS - Putty nose, white tufts in armpits and all deformities.

Thrianta

Ring Size D		Points
1	Type	20
2	Weight	10
3	Fur	20
4	Head & Ears	15
5	Top & Belly Colour	15
6	Under Colour	15
7	Condition	5
	Total	100

- Type** - The body is short, stocky, barrel shaped and in all areas well rounded. The legs are short and strong.
- Weight** - Minimum 2kg (4lb-7oz) maximum 2.75kg (6lb 1oz)

Table of points for adult weight.

kg	2.0-2.10	2.20-2.40	2.50 - 2.70	2.75
lb/oz	4/7-4/10	4/13-5/5	5/8-5/15	6/1
Points	8	9	10	9

- Fur** - Dense, close lying, soft and lustrous.
- Head and Ears** - The head short and broad, close to the body. The ears strong structure with good rounded tips and 8-10cm (3-4in) length, 9cm (3½in) being ideal.
- Top and Belly Colour** - Top colour intense orange/red extending brilliantly over the whole body without visible change towards the belly colour. Belly and underside of tail colour is slightly matt. Colour to be free from ticking. Eye colour brown. Nails to be dark horn colour. Whiskers must show an orange pigment.
- Under Colour** - The intensively orange/red under colour should stretch right down to the skin. The further the under colour stretches the better.
- Condition** - The exhibit should be in a perfect state of health and bodily condition, free from soiling, particularly on the feet, ears and genital organs. The coat should reflect the overall good health of the exhibit, which should appear alert and vigorous.

FAULTS - General faults common to all breeds including body shape, fur and colour, slightly lighter or slightly darker tinge at the ear edges, jaw edge and eye surround. White toe nails. Lack of intense belly colour and underside of tail, little tinge of the top colour, slight deviation of top and undercolour.

DISQUALIFICATIONS - General disqualifications common for all breeds, including body shape, fur and colour, strong deviation of the top colour, too much tinge at the ears or in the top colour, completely white belly colour or underside of the tail white barring on the forelegs, blue undercolour.

Tri-Colour Dutch

Ring Size B		Points
1	Body and type	
	Head and ears	10
	Body and bone	10
2	Design	
	Head and cheeks	15
	Blaze	10
	Saddle	15
	Stops	10
	Colour	10
3	Coat	
	Undercoat	5
	Topcoat	5
	Fur and Show condition	10
	Total	100

1. **Body & Type** - Body is cobby, head held well between shoulders, which are firm and well muscled. Ears strong, well carried, length not to exceed 10cm (4in). Chest wide and well formed. Front feet medium length - straight and fairly fine bone. Back feet held parallel to body. Pattern of head - cheeks well rounded must not touch whisker bed or corners of mouth or over past the cheekbone.
2. **Design/Colour** – Ideally one cheek to be orange -the other cheek black with ears black on orange side and orange on black cheek side. Blaze is white. It commences as a point starting from near the ear roots and gradually widens evenly passing between the eyes on to the neck and nape. This white must be as wide as possible. Must not pass between the ears. The saddle must make a true ring around the body and be placed 2-3cm (3/4-1¼in) behind the front feet. The coloured half must be 2-3cm (3/4-1¼in) banded as regularly as possible with alternating bands of black and orange. Stops an evenly cut pair, clearing the toes, and finishing no more than halfway along the foot.
Colours - Also recognisable, blueandfawn to replace black, chocolate to replace black.
3. **Fur** – Short thick and lustrous with plenty of undercoat and guard hairs.

Weight - 1.70-2.5kg (3¾-5½lb)

FAULTS - Coloured fur on the white part or white patches on the coloured parts.

DISQUALIFICATIONS - Discoloured or wall eyes (pale blue iris) specked eyes (pale blue spots or specks on the iris). Flesh markings (usually on ears). Trimming (attempts to straighten out irregularities, dyeing white spots on coloured fur, etc). Malocclusion and mutilated teeth.

F19

Tri-Colour English

Ring Size E		Points
1	Head Markings	33
2	Body Markings	47
3	Colour	10
4	Type/Weight	5
5	Condition	5
	Total	100

1. Head Markings

- a) Perfect Butterfly Smut 15
- b) Circle around eyes 8
- c) Cheek spots to be clear from eye circles
(either cheek spot missing, deemed to be a serious fault) 5
- d) Ears neat and clear from white and not over 10.16cm (4in) long 5
(Ears over 4 in long deemed to be undesirable)

2. Body Markings

- a) Unbroken Saddle, to be herring-boned and clear in any distinct colour,
from base of ears to tip of tail. (A definite break deemed to be a serious fault) 10
- b) Body or loin markings to be broken up and not to catch the saddle 12
- c) Chain markings, to be as even as possible on each side 12
- d) Leg markings, one distinct spot on each leg
front legs – 5 points
back legs – 2 points 7
- e) Belly or Teat Spots (there should be six) 6

3. Colour

Marking/Pattern to be a mixture of Black and Orange or Blue and Yellow. Each part of the marking/pattern to be bi-coloured, with the exception of the cheek spots which may be single coloured. 10
Faults - (colour) pale or brindled colour
Disqualifying faults - (colour) - any marking/pattern of one colour only, with the exception of cheek spots

4. Size and Type

2.71-3.628kg (6lb-8lb) prominent dewlaps and chopped rumps undesirable). 5

5. Condition

The exhibit should be in a perfect state of health and bodily condition, free from soiling, particularly on the feet, ears and genital parts. The coat should reflect the overall good health of the of the exhibit which should appear alert and vigorous. 5

Total 100

IDEAL - The markings on both sides of the rabbit to be equally balanced. Chain markings, to commence at the base of the ears in small spots, increasing in size towards the loins.

FAULTS - Large dewlaps in does, rear feet not parallel to the body, light soiling of feet, ears and genital organs, bare pads, fur slightly soiled or matted, long toenails, lack of vitality.

DISQUALIFICATIONS - Both cheek spots touching eye circles. All exhibits with putty noses. Deformities and mutilations, deformation of the teeth, pendant ears, ears tipped over, feet bowed or bent, crooked tail, any discernible illness or disease, blindness or partial blindness, incorrect eye colour, any parasitic infection, much soiling, matted coat, sore pads (where skin is broken or scabbed, any evidence of irregular preparation for exhibition including trimming and dyeing.

Miniature Papillon

Ring Size K		Points
1	Type and body shape	20
2	Weight	10
3	Fur	20
4	Head markings	15
5	Body markings	15
6	Colour	15
7	Condition	5
	Total	100

1. **Type and body shape** - The body is moderately short and cobby, with front and rear of even width. The back line is short with a well rounded rump. Legs are short. The head is short, strong and close coupled. The muzzle and forehead are fairly broad. The ears are in keeping with the overall size and type of the breed, together at the base, ideally slightly open in a V shape towards the tips. They should be strong and firm in texture, well rounded at the tip. Ideal ear length is 6.5 cm (2.5ins), adult minimum 5.5 cm (2.25ins), maximum 8.0cm.(3.1ins)

1. **Points for adultweight**

Kg	1.2 - 1.3	Over 1.3 - 1.4	Over 1.4 - 1.8	Over 1.8 - 1.9
lbs/	2lb10 -	Over 2lb13 -	Over 3lb1oz -	Over 3lb15oz -
oz	2lb13oz	3lb1oz	3lb15oz	4lb3oz
Points	8	9	10	9

Ideal adult weight 1.4 – 1.8 kg. (3lb1oz-3lb15oz), maximum 1.9 kg.(4lb3oz)

2. **Fur** - The fur is short, dense and soft, with springy even guard hairs without coarse protruding tips.
3. **Head markings** - The head markings consist of a butterfly, eye circles, cheek spots, and coloured ears. The butterfly is fully developed with a rounded thorn in the centre of the nose, and wings completely covering the upper lips and slightly extending onto the lower lip. The eye circles are closed and of an even width; a clip is permitted. The cheek spots are freestanding, under the eye circles and not touching the butterfly. The ear colour starts crisply at the base of the ear and connects with the large patch on the back of the neck, completing the head markings.

4. **Body Markings** - The body markings consist of the saddle 1.5-2cm ($\frac{5}{8}$ in- $\frac{7}{8}$ in), two side markings, and the top of the tail. The saddle starts at the patch on the back of the neck and continues without a break to the tip of the tail, without any runs. On each side, the ideal side marking consists of 5-7 freestanding patches (minimum 3) of 2-3 cm diameter, evenly spread on flanks and thighs.
5. **Colour** - Permitted colours – Black/White, Blue/White, Tri-colour (Black & Gold) and Chocolate/White (Dark Chocolate). Colour should be well down to the skin with the base colour being pure white. Markings are sharply bordered. Whiskers are pigmented and nails colourless. Eye colour to match that of each recognised colour.
6. **Condition** - See general recommendations.

FAULTS - General minor faults to body shape, fur and colour, pointed head. Butterfly slightly small, large or uneven wings or thorn, white or flesh coloured upper lip. Uneven, slightly wide or narrow eye circles or cheek spots. Ragged base to ears. Uneven, wide or narrow saddle. Break in the saddle between the neck and shoulders, or on the tail. Slight yellow tinge to the white base colour. Coloured markings slightly specked with white or other colour. Coloured nails.

DISQUALIFICATIONS - General major faults to body shape, fur and colour. Weight over 1.9 kg. Ears over 8.0 cm. Absence of a marking. Less than 3 spots on either side. More than 3 spots on the front half of the body (including neck, chest and front legs), more than 3 chain spots. Double cheek spots. Head markings touching. Broken eye circle (excluding any clip). Butterfly closed on lower jaw. Clearly visible gap in saddle between shoulder blades and tip of tail. Less than 3 spots on a side (not counting the patch on the heel). Many white hairs, or patches of white, in coloured markings. Absence of one colour in a marking, with the exception of cheek spots.

Cashmere Lop

Ring Size D		Points
1	Type and Condition	30
2	Head, Ears and Crown	30
3	Coat	30
4	Colour	10
	Total	100

1. **Type and Condition** - Bold thickset and firm. The body should be short, broad and well muscled with little visible neck. The well muscled rump is short and well rounded. The chest is broad and deep. The overall appearance giving a compact impression. The front legs are thick short and straight. The hind legs are short, strong and powerful and carried parallel to the body. The tail is strong straight and well furred. The maximum weight is 2.38kg (5¼lb) with the ideal weight being 2.15kg (4½lb). The minimum adult weight is 1.92kg (4¼lb).
2. **Head, Ears and Crown** - The head should be strong, bold, and broad, with well developed cheeks set well into the shoulders. The ears are broad, thick, well furred and rounded at the ends. They are carried close to the cheeks giving a horseshoe like shape when viewed from the front. The inside of the ears should not be visible from any angle when carried correctly. The crown, which is the basal ridge of each ear, should be prominent across the top of the skull. The eyes should be bold and bright.
3. **Coat** - Fur is dense, the topcoat being longer and heavier than the undercoat with plenty of longer stronger guard hairs. Approximately 3.81-5.08cm (1½-2in) long and should not be woolly, matted or felted. The coat to hang down naturally. Evenness is more important than length.

WEIGHT - Minimum adult weight 1.92kg (4¼lb) Ideal 2.15kg (4½lb) maximum 2.38kg (5¼lb)

FAULTS - White hairs in solid colours. White toe nails in coloured exhibits.

DISQUALIFICATIONS - Over 2.38kg (5¼lb), adults under 1.92kg (4¼lb). Waviness in coat, malocclusion, deformities.

4. **PERMITTED COLOURS:**

SELF - REW, Black, Blue, Chocolate, Lilac, BEW

AGOUTI PATTERN - Agouti, Chinchilla, Opal, Squirrel, Cinnamon, Lynx

SHADED - Siamese Sable, Siamese Smoke, Sealpoint, Bluepoint, Sooty Fawn, Beige, Iron Grey, Chocolate Tort.

TAN PATTERN - Fox and Otter (Black, Blue, Choc. Lilac), Marten Sable, Marten Smoke

OTHER COLOURS - Orange, Fawn, Butterfly, Steel.

Any other colour so long as it conforms to the normal pattern of accepted colours of other breeds excluding Broken Pattern.

SELF:

White - As pure white as possible. Eyes ruby red or blue.

Black - A deep solid black carried well down hair shaft with slate undercolour. Eyes dark hazel, black or blue.

Blue - A deep solid slate blue to carry well down hair shaft. Eyes blue.

Chocolate - Deep rich chocolate, even and sound, top colour to go down the hair shaft as far as possible, undercolour to be pearl grey. Eyes to be brown, tan or grey with ruby glow.

Lilac - A pinky dove-grey top colour. Even and sound as far down hair shaft as possible. Eyes to be lilac with ruby glow.

AGOUTI PATTERN:

Agouti - Rich chestnut top colour with black ticking over an intermediate orange band with dark slate undercolour. Ears laced black. Eye circles, belly and undertail white with slate blue undercolour. Pale top colour a fault.

Chinchilla - Undercolour to be dark slate blue at base, intermediate portion pearl with black narrow line edging. Pearling to be clearly defined. Top grey brightly ticked with black hairs, neck fur to be lighter in colour than body, but strictly confined to nape. Flanks and chest ticked with uniform shade of pearl slightly lighter than body. Eye circles light grey. Ears laced black.

Opal - Top colour pale shade of blue with fawn band between this and slate blue undercolour. Ears laced blue. Eye circles, underside of tail and belly to be white with slate undercolour.

Squirrel - Undercolour to be dark slate blue at base, intermediate portion pearl with blue narrow line edging. Pearling to be clearly defined. Top grey brightly ticked with blue hairs. Neck fur lighter in colour than body but strictly confined to nape. Flanks and chest ticked with uniform shade of pearl slightly lighter than body. Eye circles light pearl grey. Ears laced with blue.

Cinnamon - Bright golden tan top colour with chocolate ticking over an intermediate orange band with slate undercolour. Ears laced chocolate. Eye circles, belly and under tail white with slate undercolour. Eyes golden brown with ruby glow.

SHADED:

Siamese Sable - Medium, very rich sepia on ears, face, back, outside of legs and upper side of tail, shading to a paler undercolour. Saddle colour shading to a paler colour on flanks and belly the dark face colour to shade off from eyes to jowl to blend with the chest and flanks. All blending to be gradual, avoiding any blotches or streaks and consisting of a soft and varied diffusion of sepia shadings. Eyes to have a distinct ruby glow. Brown eyes are a fault.

Light - As medium but colour to be rich sepia.

Dark - As medium but colour to be very rich dark sepia. Eyes may be dark brown.

Sealpoint - A rich dark sepia brown on ears, nose (mask) feet and tail. Body to be cream with sepia shadings which are gradual to avoid blotches or streaks. Eyes to have a distinct ruby glow. Brown eyes are a fault.

Siamese Smoke - Saddle to extend from nape to tail to be smoke in colour, shading to pearl grey beige on flanks, chest and belly. Head, ears feet and upper side of tail to match saddle as near as possible. All shadings to be gradual to avoid blotches or streaks. Undercolour to match surface colour as closely as possible following the various shadings throughout. Eyes to have a distinct ruby glow, brown eyes are a fault.

Bluepoint - Smoky blue on ears, nose (mask) feet and tail. Cream body colour. Eyes to have a distinct ruby glow. Faults: Brown eyes. Too much colour on body.

Sooty Fawn - Even shade of orange top colour to carry well down hair shaft to a white undercolour. Ears, belly, undertail to be bluish black (sooty), cheeks and flanks to be shaded topped with sooty tips. Eyes hazel. Faults: Too dark top colour, light tails. White tails a serious fault.

Iron Grey - Light grey top colour to carry well down shaft to white undercolour. Shadings as sooty fawn. Eyes hazel. Faults: Too dark top colour, light tails. White tails a serious fault.

Beige - Dark chamois or light sandy colour, down to skin, faintly ticked with blue. Hairs tinted light at base, medium in middle and darker at tips. Blue shading on flanks, muzzle, and edges of ears. Topside of hind legs beige, pads blue. Fore feet same as body. Tail beige on top, blue under. Belly beige with deeper blue shadings.

TAN PATTERN:

Fox Black - To be an even jet black, with undercolour as dark as possible, extending to skin. The chest, flanks and feet to be well and evenly ticked with silver guard hairs. Any extension of the ticking up the side and/or over the back to be considered a beauty and not a fault.

The eye circles as neat as possible, a pea spot in front of the base of each ear. Inside of ears, line of jaw, underside of tail and belly, all to be white, undercolour permissible. Triangle behind ears to be white but as small as possible. Eyes brown or grey.

Fox Blue - Medium blue, even and sound, extending to the skin. Eyes to be brown, blue or grey.

Fox Chocolate - Dark chocolate, even and sound, top colour to go down as far as possible, undercolour to be slate. Eyes to be lilac, brown, blue or grey, brown preferred.

Fox Lilac - Pinky dove top colour, even and sound, undercolour to be dove. Eyes to be lilac with ruby glow.

Marten Sable - Dark to be very rich dark sepia on back, ears, face and outside of tail, the saddle colour to be well carried down the sides and then shading off to pale colour on flanks - the dark face colour to shade off to blend with chest and flanks. All blending to be gradual, avoiding

any blotches or streaks and consisting of a soft and varied diffusion of sepia shadings, the dark colour on back to extend from nape of neck to tail.

The chest, flank, rump and feet to be well ticked with longer white hairs any extension of white ticking over sides and rump to be considered an added beauty and not a fault, but the ears and saddle to be free of white hairs. The light nape of neck to be confined to triangle behind ears and to be as small as possible; colour to match flanks. Eye circles, inside of ears, line of jaw, belly and underside of tail to be white. General undercolour to match surface colour as closely as possible, following the varied shadings throughout.

Eye colour as for Siamese Sable. Marten medium and light - degrees of sepia to decide classes.

Marten Smoke - Saddle to extend from nape to tail to be smoke in colour, shading to pearl grey beige on flanks, chest and belly. Head, ears, feet and upper side of tail to match saddle as near as possible. All shadings to be gradual to avoid blotches or streaks. Undercolour to match surface colour as closely as possible following the varied shadings throughout. The chest, flanks, rump and feet to be well ticked with longer white hairs, any extension of white ticking over side and rump to be considered an added beauty and not a fault, but the ears and saddle to be free of white hairs. The light nape of neck to be confined to triangle behind ears and to be as small as possible. Eye circles, inside of ears, line of jaw, inside nostrils, inside of legs and feet, belly and underside of tail to be white. The colour under white belly fur should be fawn. Eye colour as for Siamese Smoke.

Otter - Colour black, blue, chocolate or lilac uniform colour to cover back and sides. The underbody or belly to be creamy white and also underside of tail. A tan border to divide the white and colour and encircle nostrils and under chin. A mixture of body colour and tan covers feet. Tan ticking to the chest, flanks and rump, extended ticking to be an added beauty not a fault. Tan eye circle and nape of neck.

The ears to be as body colour bordered on outside with tan which covers inside of ears. Fault: A distinct lack of tan from proper parts.

OTHER COLOURS:

Fawn - Bright rich fawn free of black/blue guard hairs shading to a white undercolour. Chest to match flanks. Eye circles, inside of ears, underside of jowl, belly and undertail to be white. Faults: Black/blue guard hairs and/or blue undercolour to be considered a serious fault.

Orange - Rich orange free from ticking, belly white, white or cream undercolour, eyes hazel.

Steel - Dark steel grey merging to a slate blue undercolour. The whole interspersed with black guard hairs. Extreme tips of the fur to be ticked with steel, blue or grey. The mixture to carry well down the sides, flanks and hind feet. Belly colour will be a lighter shade varying with the top colour, underside to tone with belly colour. Ears to match body. Eyes deep hazel.

Butterfly - A white pattern on any other recognised colour (except Sealpoint, Bluepoint and Iron grey). The pattern to be as symmetrical as possible. Any deviation from the pattern is regarded as a pattern fault. However, it must be understood that for colour and pattern together there are just 10 points. The face is predominantly coloured. The white markings around the nose leave a distinct butterfly smut, which covers the nose and top lip. The white strip between the eyes can extend upwards between the crown. There is a white patch above each eye. Ears to match body colour. A small white patch on ears just below crown is allowed. Body colour to extend from tip of tail to as near shoulders as possible and to extend down to flanks. No white to be present in general body colour except for the two white spots, one on top of each shoulder. Lower flanks, feet, chest and entire underside to be white with teat spots permissible. Front legs white with elbow patches of colour allowed. White toenails. Eye colour to be that required for the body colour.

Accept any other colour or pattern which conforms to the colour or pattern of recognised breeds, excluding broken pattern.

Miniature Cashmere Lop

Ring Size C		Points
1	Type and Condition	30
2	Head Ears Crown	30
3	Coat	30
4	Colour	10
	Total	100

1. **Type and Condition** - Bold thickset and firm. The body should be short, broad and well muscled with little visible neck. The well muscled rump is short and well rounded. The chest is broad and deep. The overall appearance giving a compact impression. The front legs are thick, short and straight. The hind legs are short, strong and powerful and carried parallel to the body. The tail is strong, straight and well furred.
2. **Head Ears & Crown** - The head should be strong, bold and broad with well developed cheeks set well into the shoulders. The ears are broad, thick, well furred and rounded at the ends. They are carried close to the cheeks, giving a horseshoe like shape when viewed from the front. The inside of the ears should not be visible from any angle when carried correctly, the crown, which is the basal ridge of each ear, should be prominent across the top of the skull. The eyes should be bold and bright.
3. **Coat** - Fur is dense, the topcoat being longer and heavier than the undercoat with plenty of longer stronger guard hairs. Approximately 3.8-5.0cm (1½-2in) long and should not be woolly, matted or felted, to hang down naturally. Evenness is more important than length.
4. **Colour** - To conform to the recognised colour or pattern as per the Standard Cashmere.

WEIGHT - 1.60kg (3½lb) maximum.

FAULTS - White hairs in solid colours. White toe nails in coloured exhibits. Putty nose in Butterfly pattern. Coats with extremes in softness or harshness.

DISQUALIFICATION - Overweight, waviness in coat, malocclusion, any deformities.

Dwarf Lop

Ring Size C		Points
1	General type and condition	30
2	Head, Ears, Crown and Eyes	25
3	Coat	20
4	Guard hairs	10
5	Colour	15
	Total	100

WEIGHT. Maximum - 2.381kg (5lb 4oz)
Minimum - 1.93kg (4lb 4oz)

1. **Type** - Body short with well rounded loins. Deep chest and wide shoulders, giving a cobby well-muscled appearance. Short strong legs.
2. **Head, Crown, Ears and Eyes.**

Head - Well developed particularly in bucks. Good width between eyes. Full cheeks and broad muzzle are desirable.

Crown - The basal ridge of the ears should appear prominent across the top of the skull.

Ears - Should be broad, thick well furred and rounded at ends. They should be carried close to the cheeks giving a horseshoe like outline when viewed from the front. The inside of the ears should not be visible from any angle when carried correctly. The ears are not measured.

Eyes - Round and bright.

3. **Coat** - Coat to be dense and of good length, rollback with an abundance of guard hairs.
4. **Guard Hairs** - An abundance of Guard Hairs.

FAULTS. Narrow shoulders, long in body, narrow head. Ears carried back or not fully lopped. Coat too short or fly-back. Excessive white hairs in coloured exhibits, light tails in sooty fawns. White tails in sooty fawns a serious fault.

DISQUALIFICATIONS. Weight over maximum. Adult weight under 4lb 4oz. Poor condition. Malocclusion. Runny eyes, odd coloured or wall eyes. Putty nose. Bunches of white hairs or white toenails in coloured exhibits.

5. **COLOURS**
SELF

White - As pure white as possible. Eyes ruby red or blue.

Black - A deep solid black, carried well down hair shaft with blue/black undercolour. Eyes dark hazel or black.

Blue - Deep or medium slate blue carried well down hair shaft with slate blue undercolour. Eyes dark blue.

Brown - Dark brown carried well down hair shaft. Slate blue undercolour. Eyes brown.

AGOUTI PATTERN

Agouti - Rich chestnut top colour with black ticking over an intermediate orange band with dark slate undercolour. Ears laced black. Eye circles, belly and undertail white with slate blue undercolour. Pale top colour a fault.

Chinchilla - Undercolour to be dark slate blue at base. Intermediate portion pearl with black narrow line edging. Pearling to be clearly defined. Top grey brightly ticked with black hairs, neck fur to be lighter in colour than body but strictly confined to nape. Flanks and chest ticked with uniform shade of pearl slightly lighter than body. Eye circles light grey. Ears laced black.

Opal - Top colour pale shade of blue with fawn band between this and a slate blue undercolour. Ears laced blue. Eye circles, underside of tail and belly to be white with slate undercolour.

SHADED

Siamese Sable - Medium, very rich sepia on ears, face, back, outside of legs and upper side of tail shading to a paler undercolour. Saddle colour shading off to a considerably paler colour on flanks and belly, the dark face colour to shade off from eyes to jowl to blend with the chest and flanks. All blending to be gradual, avoiding any blotches or streaks and consisting of a soft and varied diffusion of sepia shadings. Eyes to have a distinct ruby glow.

Light - As medium, but colour to be rich sepia.

Dark - As medium but colour to be very rich dark sepia.

FAULTS - Brown eyes, white hairs.

Siamese Smoke - saddle to extend from nape to tail to be smoke in colour, shading to pearl grey beige on flanks, chest and belly. Head, ears feet and upper side of tail to match saddle as near as possible. All shadings to be gradual to avoid blotches or streaks. Undercolour to match surface colour as closely as possible following the varied shadings throughout. Eyes to have a distinct ruby glow.

FAULTS - Brown eyes, white hairs.

Sealpoint - A rich dark sepia brown on ears, nose (mask), feet and tail. Creamy light body colour. Eyes to have a distinct ruby glow.

FAULTS - Brown eyes, too much colour on body, iron grey - disqualification.

Sooty Fawn - Even shade of orange/fawn top colour to carry well down hair shaft to a bluish/white undercolour. Ears, belly, undertail/tail to be bluish black (sooty) cheeks and flanks to be shaded/topped with sooty tips. Eyes hazel.

FAULTS - Too dark top colour, light tails. White tails a serious fault.

TAN PATTERN

Black Fox - To be an even jet-black with under colour as dark as possible extending to the skin. The chest, flanks and feet to be well and evenly ticked, with silver-tipped guard hairs. Any extension of the ticking up the side and/or over the back to be considered a beauty and not a fault. The eye circles as neat as possible, a pea spot in front of the base of each ear. Inside of ears, line of jaw, underside of tail and belly, all to be white, undercolour permissible. Triangle behind ears to be white but as small as possible. Eyes brown or grey.

Blue Fox - To be medium blue (even and sound) extending to the skin. Eyes to be brown, blue or grey.

Chocolate Fox - To be dark chocolate (even and sound) top colour to go down as far as possible, undercolour to be slate. Eyes to be lilac, brown, blue or grey. Brown preferred.

Lilac Fox - To be pinky-dove top colour (even and sound) undercolour to be dove. Eyes to be lilac with a ruby glow.

Sable Marten Dark - To be very rich dark sepia on back, ears, face and outside of tail, the saddle colour to be well carried down the sides and then shading off to a paler colour on flanks - the dark face colour to shade off to blend with chest and flanks, all blending to be gradual, avoiding any blotches or streaks and consisting of a soft and varied diffusion of sepia shadings, the dark colour on back to extend from nape of neck to tail. The chest, flanks, rump and feet to be well ticked with longer white hairs, any extension of white ticking over sides and rump to be considered an added beauty and not a fault, but the ears and saddle to be free of white hairs. The light nape of neck to be confined to triangle behind ears and to be as small as possible colour to match flanks. Eye circles, inside of ears, line of jaw, belly and underside of tail to be white. General under colour to match surface colour as closely as possible, following the varied shadings throughout.

Marten Medium - Degrees of sepia to decide classes.

Marten Light - Degrees of sepia to decide classes.

OTHER COLOURS

Fawn - bright rich fawn free of black/blue guard hairs shading to a white undercolour. Chest to match flanks. Eye circles, inside of ears, underside of jowl, belly and undertail to be white.

FAULTS - Black/blue guard hairs to be considered a serious fault.

Orange - Rich orange free from ticking, belly white. White or cream undercolour. Eyes hazel.

Steel - Steel grey merging to a slate blue undercolour. The whole interspersed with black guard hairs. Extreme tips of the fur to be tipped with steel blue or grey. The mixture to carry well down the sides, flanks and hind feet. Belly colour will be a lighter shade varying with the top colour, underside to tone with belly colour. Ears to match body. Eyes deep hazel.

Butterfly - Colour of butterfly nose marking, to fully cover nose and top lip. Head markings, white to be in proportion to body colour. Ears to match the body colour. Body colour to extend from tail to shoulders, patches of colour on white of shoulders permissible. Body colour to extend down to flanks. Flanks, chest and belly white, teat spots permissible. No white to be present in general body colour.

UNDESIRABLE – Barring on the front feet of coloured exhibits.

FAULTS - Too many white hairs in nose, top lip and body markings.

DISQUALIFICATIONS - Putty nose, white tips on ears.

ANY OTHER COLOUR - Any colour or pattern that conforms to the colour or pattern of recognised breeds, with the exception of the broken and mantle pattern.

English Lop

Ring Size H		Points
1	Ear length	10
2	Ear Width	15
3	Ear Shape	15
4	Ear Substance & Carriage	10
5	Colour and Markings	10
6	Type	10
7	Straight Feet & Tail	10
8	Eyes	5
9	Size	10
10	Condition	5
	Total	100

1. **Ear Length.**
2. **Ear Width.**
3. **Ear Shape** - To be well rounded at the tips, not trowel shaped.
4. **Ear Substance and Carriage** - To be nice and thick like leather, not like thin paper, not to be carried pricked in any way; no pimples.
5. **Colour and Markings** - Any colour permitted, but whatever colour it may be it must be good. i.e. black to be raven black, fawn, rich golden fawn, sooty-fawn, shading to be dense. See footnote re-marked rabbits.
6. **Type** - The head to be bold, the whole body of the rabbit to resemble a mandolin, curved side uppermost.
7. **Straight Feet and Tail** - The front feet not to be bow legged or bent, tail not to be screwed.
8. **Eyes** - To be bold and bright, not dull.
9. **Size** - As large as possible, but not out of proportion.
10. **Condition** - Firm in flesh, good in coat, no ear canker or any other disease.

FOOTNOTE - Marked specimens can be of any of these colours. The white markings around the nose to be such that leave a distinct butterfly smut or as the shading on the Sooty-Fawn. The white should extend upwards from the chin and chest over the shoulder with two spots, one each side on the shoulders called shoulder spots. No white to be present in the general body colouring. The belly to be white and similar to the tan on the Tan rabbit but not brindled up the sides of the body.

French Lop

Ring Size H		Points
1	Type	30
2	Head, Crown, Ears & Eyes	35
3	Coat	15
4	Condition	10
5	Colour	10
	Total	100

WEIGHT: As large as possible. Minimum adult weight 4.535kg (10lb.). No maximum weight for adults or u/5 months.

1. **Type** - Massive, thickset and firm. The body should be short, broad and well muscled, with little visible neck. The line of the back rises in a curve to a well-muscled rump, which is short and well rounded. The chest is broad and deep providing curved sides where it meets the shoulders, which are broad and strong. The front legs are thick, short and straight. The legs are short, strong, powerful and the hind legs carried parallel to the body. The tail is straight, strong and well furred. A small dewlap is permissible in bucks but is not favourable - dewlaps larger in does.
2. **Head, Crown, Ears and Eyes:**

Head - Well developed particularly in bucks. Good width between eyes. Full cheeks and broad muzzle are desirable.

Crown - The basal ridge of the ears should appear prominent across the top of the skull.

Ears - Should be broad, thick, well furred and rounded at ends. They should be carried close to the cheeks, giving a horseshoe like outline when viewed from the front. The inside of the ears should not be visible from any angle when carried correctly. The ears are not measured.

Eyes - Round and bright.
3. **Coat** - Rollback, dense with plenty of guard hairs. Legs and pads to be well furred.
4. **Condition** - Condition to be firm and healthy.

FAULTS: Poorly muscled, lacking firmness, loose skin over hind legs. Body too long and/or too lean. Head not sufficiently characteristic of the breed. Pimpled or damaged ears. Poor ear carriage. Crown not developed. Fly back coat. Bowed or splayed legs. Excessive white hairs in coloured exhibits, white tail in sooty fawn (excessive white hairs in nose and top lip applies to butterfly exhibits).

DISQUALIFICATIONS: Adult weight under 4.535kg (10lb). Malocclusion of teeth. White toe nails in coloured exhibits. Putty nose.

5. COLOURS

SELF:

White - As pure white as possible. Eyes ruby red or blue.

Black - A deep lustrous solid black carrying well down to the skin with blue or slate undercolour. Eyes dark hazel or black.

Brown - Dark brown carried well down hair shaft. Slate blue undercolour. Eyes brown.

Blue - Deep solid slate blue to carry well down hair shaft. Eyes dark blue.

AGOUTI PATTERN:

Agouti - A rich chestnut shade with black ticking over an intermediate orange band and dark slate undercolour. Belly and undertail white with slate undercolour.

Chinchilla - The undercolour to be dark slate blue at base, intermediate portion pearl (slate to be wider than pearl) with black narrow line edging to be clearly defined. Top grey brightly ticked with black hairs. Even or wavy ticking admissible. Neck fur lighter.

Opal - Top colour pale shade of blue over an intermediate fawn band and slate undercolour. Belly colour white with slate undercolour.

SHADED:

Sooty-Fawn (Madagascar or Tortoiseshell) - Rich orange saddle gradually shading to a blue/black on the flanks, haunches and belly. 'Points' bluish/black. Top colour to go well down fur with a bluish-white undercolour.

Siamese Sable- Medium: Rich sepia on ears, face, back, outside of legs and upperside of tail shading to paler undercolour. Saddle to carry well down the flanks, shading to a paler colour on lower flanks and belly. Dark colours to shade off from eyes to jaw, to blend with chest and flanks. Dark colour on back to extend to tail. Chest to be same colour as flanks. All blending to be gradual avoiding blotchiness. Eyes to have a distinct ruby glow.

Light: As Medium but colour to be rich sepia.

Dark: As Medium but colour to be very rich dark sepia.

ANY OTHER COLOUR:

Orange - Rich orange free from ticking. Belly white. White or cream undercolour. Eyes hazel.

Fawn - Bright golden fawn carried well down the flanks, shading to a white belly. Colour to go well down fur with a white undercolour. Excessive black/blue guard hairs a fault.

Steel - Steel Grey merging to a slate blue undercolour. The whole interspersed with black guard hairs. Extreme tips of the fur to be tipped with steel blue or grey. The mixture to carry well down the sides, flanks and hind feet. Belly colour will be a lighter shade varying with the top colour, underside to tone with the belly colour. Ears to match body, eyes a deep hazel.

Butterfly - Pattern to be white and any other allowed colour. The white markings around the nose to be such that leaves a distinct butterfly smut or as the shading on the sooty-fawn. Ears to be coloured. The white should extend upwards from the chin and chest over the shoulders with two spots one each side on the shoulders called shoulder spots. A small 'V' on the shoulders is permissible. No white to be present in the general body colouring. The belly to be white but teat spots permissible. White on nose or smut is a pattern fault.

UNDESIRABLE – Barring on the front feet of coloured exhibits.

FAULTS - Too many white hairs on nose and top lip.

DISQUALIFICATIONS - Putty nose.

ANY OTHER COLOUR - Any colour or pattern that conforms to the colour or pattern of recognised breeds, with the exception of the broken and mantle pattern.

German Lop

Ring Size L		Points
1	Overall Type and Shape	30
2	Head and Crown	20
3	Ears	20
4	Coat	15
5	Colour or Pattern	10
6	Condition	5
	Total	100

1. **Type** - Very cobby, massive and muscular. The neck on a good German Lop should not be visible. Ideally it should be equally as broad in the shoulder as the hindquarters. From a short nape the line of the back should rise in a slight curve to a well-muscled rump which should be short and well rounded. The front legs are short, straight and thick. The hind legs should lie parallel to the rump and not jutting out when resting. A dewlap in does is permissible.
2. **Head** - The head should be strongly developed with a distinct width between the eyes. The German Lop should have a Roman nose appearance with well-developed cheeks.
3. **Ears** - The ears should be broad, thick and of good substance, they rise from a strong ridge called the crown on top of the head, carried closely to the cheeks, with the openings turned inwards. The ears should hang down straight just behind the eyes without either being carried forwards or backwards. Ear length, measured across the skull minimum 27.96cm - maximum 35.5cm. (11-14in maximum).
4. **Coat** - The fur is of normal length, very dense with strong guard hairs.
5. **Colour or Pattern** - All recognised colours, including the butterfly pattern are accepted but not the broken pattern.
6. **Condition.**

DESIRED WEIGHT - Adult, minimum 2.95kg - max 3.85kg (6½lb - max 8½lb)

The maximum weight for an u/5 exhibit at a show shall be 2.948kg (6 1/2lb).

DISQUALIFICATIONS - Adult Weight over 3.85kg (8½lb.) U/5 month weight over 2.95kg (6½lb). Putty nose on Butterfly pattern. White patches on coloured rabbits.

Meissner Lop

Ring Size H		Points
1	Type	20
2	Weight	10
3	Fur	20
4	Head and Ears	15
5	Colour Silvering & eveness	15
6	Undercolour	15
7	Condition	5
	Total	100

- Type** – The Meissner Lop is less stocky than the larger lops. Its body is slightly stretched, the chest and rear parts are broad the back is nicely arched and well rounded at the rear. The strong legs are sitting wide apart and straight. The position of the body is of medium height. A small well formed dewlap is permissible in older does.
- | Weight-Kg | 3.50 | 4.00 | 4.50 – 5.50 | Maximum |
|-----------|------|------|-------------|---------|
| Lbs | 7¾ | 9 | | 10 |
| Points | 8 | 9 | | 10 |
- Fur** – The Fur is dense, well and evenly interspersed with guard hairs. The hair length is medium
- Head and Ears** – The head has a beautiful arched profile, however not with the distinct head type of the large lops. In general the head should be furnished with a broad forehead and mouth part. The ideal ear length is between 36-42cm (15-16 in). The ears are set well on both sides and tube like with the opening of the ear to the inside.
- Colour** - Silvering and Eveness – Accepted colours are black, blue, yellow and Havana. The top colour of the whole body is evenly silvered with ample sheen.
- Undercolour** – As top colour going far down to the skin as possible.
- CONDITION** - As standard for all breeds.

MINOR FAULTS – General minor faults including body shape, fur and colour; inferior development of the head, deviation from the ideal length of lop ears, slight or weak lop ears, badly carried ears.

FAULTS - Minor deviation in type. Poor ear carriage. Deviation from ideal ear length.

DISQUALIFICATIONS - General major faults including body shape, fur and colour: complete lack of lop type, bad development of coat. Level or slightly erect ears. Length of lop ears under 36cm or over 42cm completely dark head without silvering.

Miniature Lop

Ring Size K		Points
1	Type)	30
2	Weight)	
3	Coat	20
4	Head, Crown and Eyes)	
5	Ears)	30
6	Colour and Pattern	15
7	Condition	5
	Total	100

1. **Type** - Bold thickset and firm. The body should be short, broad and well muscled with little visible neck. The well-muscled rump is short and well rounded. The chest is broad and deep with curved sides where it meets the shoulders, which are broad and strong. The front legs are thick, short and straight. The hind legs are short, strong, powerful and carried parallel to the body. The tail is straight, strong and well furred. A small dewlap is permissible but not desirable.

2. **Adult Weight**

	Ideal	Maximum
kg	1.5	1.6
lb/oz	3.4	3.8

Maximum weight for under 5 months exhibits to be 1.360kg (3lb)

3. **Coat** - The coat to be dense and of good length, rollback with an abundance of guard hairs. Legs and pads to be well furred.
4. **Head, Crown and Eyes** - The head is bold, broad and well developed. The profile of the head is strongly curved with a good width between the eyes, full cheeks and a broad muzzle.
The eyes are bold, bright and large. The basal ridge of the ears should appear prominent across the top of the skull to form the crown.
5. **Ears** - Should be broad, thick, well furred and rounded at the ends. They should be carried close to the cheeks giving a horseshoe like outline when viewed from the front. The inside of the ears should not be visible from any angle when carried correctly.
6. **Colour and Pattern** - Any colour or pattern accepted by the Breeds Standard Committee of the British Rabbit Council.
7. **Condition** - The exhibit should be in a perfect state of health and bodily condition, free from all soiling, particularly on the feet, ears and genital parts. The coat should reflect the overall good health of the exhibit, which should appear alert and vigorous.

FAULTS - Body too long; head not sufficiently characteristic of the breed; pimples or damaged ears; poor ear carriage; ears folded; crown not developed; fly back coat; large dewlaps in does; rear feet not parallel to the body; light soiling of feet, ears and genital organs; bare pads; fur slightly soiled or matted; long toenails; lack of vitality.

DISQUALIFICATIONS - Maloccluded or mutilated teeth; over weight limit; deformities and mutilations; deformation of the teeth; feet bowed or bent; white toe nails in coloured exhibits; white nose on butterfly pattern; crooked tail; any discernible illness or disease; blindness or partial blindness; incorrect eye colour; any parasitic infection; much soiling; matted coat; sore pads (where skin is broken or scabbed); any evidence of irregular preparation for exhibition including trimming and dyeing.

Miniature Lion Lop

Ring Size K		Points
1	Weight and Type	25
2	Coat	20
3	Head, Crown, Eye Colour and Ears	20
4	Mane	20
5	Colour and Pattern	10
6	Condition	5
	Total	100

1. **Weight and Type** - Bold thickset and firm. The body should be short, broad and well muscled with little visible neck. The well muscled rump is short and well rounded. The chest is broad and deep with curved sides where it meets the shoulders, which are broad and strong. The front legs are thick, short and straight. The hind legs are short, strong, powerful and carried parallel to the body. The tail is straight, strong and well furred. A small dewlap is permissible in adult does but not desirable.

Adult Weight	Ideal	Maximum
kg	1.5	1.6
lb	3.4	3.8

2. **Coat** - The coat to be dense and of good length, rollback with an abundance of guard hairs, often with a finer flank line of slightly longer fur running down the length of the rabbit to the tail extending in a line to the groin. Legs and pads to be well furred. A small amount of extended fur around flanks is permissible on under five months exhibits.
3. **Head, Crown, Eye Colour and Ears** - The head is bold, broad and well developed. The profile of the head is strongly curved with a good width between the eyes, full cheeks and a broad muzzle. The eyes are bold bright and large. The basal ridge of the ears should appear prominent across the top of the skull to form the crown. Ears should be broad, thick, well furred and rounded at the ends. They should be carried close to the cheeks giving a horseshoe like outline when viewed from the front. The inside of the ears should not be visible from any angle when carried correctly.
4. **Mane/Chest** - The mane should be between 5-7.5cm (2-3in) in length extending to a 'V' at the back of the neck, falling into a fringe over the crown with longer fur on the chest to form a bib.
5. **Colour and Pattern** – Chocolate Point – Overall impression light cream shading to light chocolate points. Body colour cream, belly creamy white. Smut, ears, feet and tail light caramel chocolate. Eyes caramel with a definite ruby glow. Nails light horn.

Any colour or pattern accepted by the Breeds Standard Committee of the British Rabbit Council apart from the broken pattern.

6. **Condition** - The exhibit should be in a perfect state of health and bodily condition, free from all soiling particularly on the feet, ears and genital parts. The coat should reflect the overall good health of the exhibit, which should appear alert and vigorous.

FAULTS - Long coat on ears and body, excessively short or long mane, body too long, head not sufficiently characteristic of the breed, pimples or damaged ears, poor ear carriage, ears folded, crown not developed, fly back coat, large dewlaps in does, rear feet not parallel to the body, light soiling of feet, ears and genital organs, bare pads, fur slightly soiled or matted, long toenails, lack of vitality.

DISQUALIFICATIONS - Complete lack of mane, maloccluded or mutilated teeth, over weight limit, deformities and mutilations, deformation of the teeth, feet bowed or bent, white toe nails in coloured exhibits, crooked tail, any discernible illness or disease, blindness or partial blindness, incorrect eye colour, any parasitic infection, much soiling, matted coat, sore pads (where skin is broken or scabbed) any evidence of irregular preparation for exhibition including trimming and dyeing.

Alaska

Ring Size L		Points
1	Type & Weight	40
2	Colour	40
3	Coat	20
	Total	100

1. **Type and Weight** - Thick set. Chest wide and well developed. Shoulders broad. Line of back sloping to well muscled and rounded hind quarters. Head fixed tight to the body with no visible neck, short, broad and bold in the buck, a little finer in the doe. Eyes bright and well opened, brownish black in colour. Ears broad and well furred, length in proportion to body size. Legs strong in bone and of medium length. No dewlap in the buck. A small well-formed dewlap is permissible in the doe.

Weight - 3.17-4.08kg (7-9lb)

2. **Colour** - Top colour - intensely black, brilliant and uniform over the whole body, with the exception of the belly and underside of the tail which may be more matt. Undercolour - to be deep slate blue, with the black delimitation band restricted to a width of 6mm approx. (1/4in). Toe nails black.
3. **Coat** - Dense silky and lustrous. Guard hairs evenly distributed over the body, long, strong and glossy.

FAULTS - Not thick set or well rounded, lack of brilliance in the coat. Rusty patches.

DISQUALIFICATIONS - General aspect too snaky, too long or thin. Tufts of white hairs or too many white hairs. Very rusty in colour, brownish or greyish patches in the coat. Eyes a colour other than brownish black, undercoat not to standard, non pigmented nails, putty nose, pendant ears, deformities or mutations, deformation of teeth, feet bowed or bent, crooked tail, any discernible ill health or disease, blindness or partial blindness, any parasitic infection, soiled or matted coat, sore pads (where skin broken or cracked), any evidence of irregular preparation including trimming and dyeing.

Argente Bleu

Ring Size D		Points
1	Type	30
2	Coat	30
3	Colour	30
4	Evenness	10
	Total	100

1. **Type** - Compact and fairly cobby body, short neck, markedly broad and rounded loins with wide, well developed hindquarters. Front legs straight, short and fine in bone. Ears short, proportionate in breadth, rounded and carried erect. Weight approximately 2.72kg (6lb).
2. **Coat** - Very dense, glossy, silky and lying close to the body. Desired length between 1.9-2.54cm (3/4-1in)
3. **Colour** - Undercolour lavender blue, body colour bluish white, the whole evenly and moderately interspersed with longer dark blue hairs to give a distinct bluish effect when viewed from a distance. Eyes bold and blue, toenails coloured.
4. **Evenness** - In adults the part forming the pelt and extremities to be of one shade throughout. For under five months exhibits any lavender blue self colouring remaining on the head, ears, chest, nape and belly should not be penalised as moult.

FAULTS - Dark or too long ears, too dark muzzle, washy undercolour. Creamy or yellow tint most noticeable around the neck and cheeks. Large paunch, bony or angular frame. Rear feet not parallel to the body, Fur harsh, thin, woolly or too short. Dewlaps in bucks a serious fault, large dewlaps in does. White topped or too dark exhibits to be discouraged. White toenails a minor fault. Light soiling of the feet, ears and genital organs, bare pads, fur slightly soiled or matted, long toenails, lack of vitality.

DISQUALIFICATIONS - White patches, putty nose, deformities and mutilations, deformation of the teeth, pendant ears, ears tipped over, feet bowed or bent, crooked tail, any discernible illness or disease, blindness or partial blindness, incorrect eye colour, any parasitic infection, much soiling, matted coat, sore pads (where skin is broken or scabbed), any evidence of irregularly preparation for exhibition including trimming and dyeing.

Argente Brun

Ring Size D		Points
1	Type	30
2	Coat	30
3	Colour	30
4	Evenness	10
	Total	100

1. **Type** - Compact and fairly cobby body, short neck, markedly broad and rounded loins with wide, well developed hindquarters. Front legs short, straight and fine in bone. Ears short, proportionate in breadth, rounded and carried erect. Weight approximately 2.72kg (6lb).
2. **Coat** - Very dense, glossy, silky and lying close to the body. Desired length between 1.9-2.54cm (3/4-1 in).
3. **Colour** - Undercolour as deep brown as possible, body colour brownish-white, the whole evenly and moderately interspersed with longer dark brown hairs to give a distinct brownish effect when viewed from a distance. Eyes bold and brown, toenails coloured.
4. **Evenness** - In adults the part forming the pelt and extremities to be of one shade throughout. For under five month exhibits any brown self colouring remaining on the head, ears, chest, nape and belly should not be penalised as moult.

FAULTS - Dark or too long ears, too dark muzzle, washy undercolour. Creamy or yellow tint most noticeable around the neck and cheeks. Large paunch, bony or angular frame. Rear feet not parallel to the body, Fur harsh, thin, woolly or too short. Dewlaps in bucks a serious fault, large dewlaps in does. White topped or too dark exhibits to be discouraged. White toenails a minor fault. Light soiling of the feet, ears and genital organs, bare pads, fur slightly soiled or matted, long toenails, lack of vitality.

DISQUALIFICATIONS - White patches, putty nose, deformities and mutilations, deformation of the teeth, pendant ears, ears tipped over, feet bowed or bent, crooked tail, any discernible illness or disease, blindness or partial blindness, incorrect eye colour, any parasitic infection, much soiling, matted coat, sore pads (where skin is broken or scabbed), any evidence of irregularly preparation for exhibition including trimming and dyeing.

Argente Crème

Ring Size C		Points
1	Type	30
2	Coat	30
3	Colour	30
4	Evenness	10
	Total	100

1. **Type** - Small and neat with well developed hindquarters and slightly arched back, but at the same time avoiding extremes of cobbiness or raciness. Head broad. Front legs straight, short and fine in bone. Ears short, proportionate in breadth, moderately rounded and carried erect. Weight approximately 2.26kg (5lb).
2. **Coat** - Dense, glossy, silky and lying close to the body. Desired length between 1.9-2.54cm (3/4-1in)
3. **Colour** - Undercolour orange to go down as far as possible, body colour creamy white, the whole evenly and moderately interspersed with longer orange hairs to give a distinctly creamy effect when viewed from a distance. White underbelly to be permissible but a coloured underbelly to be encouraged. Eyes bold and dark brown, toenails horn coloured.
4. **Evenness** - In adults the part forming the pelt and extremities to be one shade throughout. For under five month exhibits any orange self colouring remaining on the head, ears, chest, nape and belly should not be penalised as moult.

FAULTS - Dark or too long ears, too dark muzzle, washy undercolour. Creamy or yellow tint most noticeable around the neck and cheeks. Large paunch, bony or angular frame. Rear feet not parallel to the body, Fur harsh, thin, woolly or too short. Dewlaps in bucks a serious fault, large dewlaps in does. White topped or too dark exhibits to be discouraged. White toenails a minor fault. Light soiling of the feet, ears and genital organs, bare pads, fur slightly soiled or matted, long toenails, lack of vitality.

DISQUALIFICATIONS - White patches, putty nose, deformities and mutilations, deformation of the teeth, pendant ears, ears tipped over, feet bowed or bent, crooked tail, any discernible illness or disease, blindness or partial blindness, incorrect eye colour, any parasitic infection, much soiling, matted coat, sore pads (where skin is broken or scabbed), any evidence of irregularly preparation for exhibition including trimming and dyeing.

Argente de Champagne

Ring Size G		Points
1	Type & weight	30
2	Coat	30
3	Colour	30
4	Evenness	10
	Total	100

1. **Type & weight** - The body to have a cylindrical appearance of moderate length with a slightly arched back, rising from the shoulder to a high point over the hip bones, tapering off to well developed hind quarters, avoiding extremes of cobbiness or raciness. The head to be broad in the buck, a little finer in the doe, slightly concave in shape. The ears to be well furred, slightly rounded at the tips, carried erect, length in proportion to the body. The front legs to be strong in bone and very straight. No dewlaps in bucks, excessive dewlaps in does a fault.

Weight 4.00-5.5kg (9-12lb)

2. **Coat** - To be 3-3.5cm (1¼-1.3/8in) length, very dense, lustrous and glossy offering good resistance to the touch though avoiding harshness and lying loose rather than close to the body.
3. **Colour** - The main body to be bluish white in the adult, interspersed with longer jet black guard hairs to bring out the shade termed Old Silver when viewed from a distance. The ears, nose and muzzle may be a slightly darker shade. The belly and underside of the tail more matt. Undercolour to be dark slate blue extended down to the base of the hair shaft. A blackish delimitation band immediately under the top colour is permissible. Eyes bold and brown, toe nails dark brown. For under five months exhibits any black self colouring remaining on the head, ears, chest, nape and belly should not be penalised as moult.
4. **Evenness** - In adults the part forming the pelt to be of one shade throughout with the black guard hairs evenly distributed and approximately 3mm (1/8in) apart.

FAULTS - Poor or uneven silvering, lack of guard hairs, top colour too dark or too light, too dark ears and muzzle, too pale undercolour, excessive dewlaps in does, coat lacking density and gloss are considered minor faults. Lack of silvering, absence of guard hairs, lack of undercolour, excessive black delimitation band, thin coat, short coat, white toenails and bony or angular frames are serious faults.

DISQUALIFICATIONS - White patches, putty nose, incorrect eye colour, pendant ears, deformities or mutations, deformation of teeth, feet bowed or bent, crooked tail, any discernible ill health or disease, blindness or partial blindness, any parasitic infection, much soiling, matted coat, sore pads (where skin broken or cracked), any evidence of irregular preparation including trimming and dyeing.

Argente Noir

Ring Size D		Points
1	Type	30
2	Coat	30
3	Colour	30
4	Evenness	10
	Total	100

1. **Type** - Compact and fairly cobby body. Short neck, markedly broad and rounded loins with wide, well developed hindquarters. Front legs straight, short and fine in bone. Ears short, proportionate in breadth, rounded and carried erect. Weight approximately 2.72kg (6lb).
2. **Coat** - Very dense, glossy, silky and lying close to the body. Desired length between 1.9-2.5cm (3/4-1in).
3. **Colour** - Undercolour deep slate blue, body colour greyish white, the whole evenly and moderately interspersed with longer black hairs to give a distinct old silver effect when viewed from a distance. Eyes bold and brown, toenails coloured.
4. **Evenness** - In adults the part forming the pelt and extremities to be of one shade throughout. For under five month exhibits any black self colouring remaining on the head, ears, chest, nape and belly should not be penalised as moult.

FAULTS - Dark or too long ears, too dark muzzle, washy undercolour, creamy or yellow tint most noticeable around the neck and cheeks, large paunch, bony or angular frame, rear feet not parallel to the body. Fur harsh, thin, woolly or too short. Dewlap in bucks a serious fault, large dewlaps in does. White topped or too dark exhibits to be discouraged. White toe nails a minor fault. Light soiling of the feet, ears and genital organs, bare pads, fur slightly soiled or matted, long toe nails lack of vitality.

DISQUALIFICATIONS - White patches, putty nose, deformities and mutilations, deformation of the teeth, pendant ears, ears tipped over, feet bowed or bent, crooked tail, any discernible illness or disease, blindness or partial blindness, incorrect eye colour, any parasitic infection, much soiling, matted coat, sore pads (where skin is broken or scabbed), any evidence of irregular preparation for exhibition including trimming and dyeing.

Argente St Hubert

Ring Size D		Points
1	Type	30
2	Coat	30
3	Colour	30
4	Evenness	10
	Total	100

1. **Type** - Compact and fairly cobby body. Short neck, markedly broad and rounded loins with wide well developed hindquarters. Front legs straight, short and fine in bone. Ears short, proportionate in breadth, rounded and carried erect. Weight approximately 2.72kg (6lb).
2. **Coat** - Very dense, glossy, silky and lying close to the body. Desired length between 1.9-2.5cm (3/4-1in).
3. **Colour** - Under colour to be dark blue at the base with rich orange intermediate band together with a very narrow chestnut top band. The dark blue and orange banding to be as equal as possible in width. The chestnut limitation band as narrow as possible. Body colour to be a creamy white shade moderately and evenly interspersed with jet black guard hairs to give a creamy chestnut shade when viewed from a distance. The underbelly and under tail to be white with a dark blue under colour. Eyes bold and brown, toenails coloured.
4. **Evenness** - In adults the part forming the pelt and extremities to be of one shade throughout. For under 5 months exhibits, any chestnut/agouti colouring remaining on the main body including head, ears and chest should not be penalised as moult.

FAULTS - Dark or too long ears, too dark muzzle washy under colour. Narrow and/or pale orange intermediate banding. Black ear edging. White belly colour missing. Large paunch, bony or angular frame, rear feet not parallel to the body. Fur harsh, thin, woolly or too short. Dewlap in bucks a serious fault, large dewlaps in does. White topped or too dark exhibits to be discouraged. White toe nails a minor fault. Light soiling of the feet, ears and genital organs, bare pads, fur slightly soiled or matted, long toe nails, lack of vitality.

DISQUALIFICATIONS - White patches on main body colour, putty nose, deformities and mutilations, deformation of the teeth, pendant ears, ears tipped over, feet bowed or bent, crooked tail, any discernible illness or disease, blindness or partial blindness, incorrect eye colour, any parasitic infection, much soiling, matted coat, sore pads (where skin is broken or scabbed), any evidence of irregular preparation for exhibition including trimming and dyeing.

Beige

Ring Size D		Points
1	Type	30
2	Fur	35
3	Colour	35
	Total	100

1. **Type** - Bold head, low at shoulders rising steadily to rump. Stoutly built rabbit and fine boned - like Havana. Legs: short, straight, fine to medium bone. Toenails: horn colour. Ears: Short and erect - not longer than 12cm (5in). Weight 2.26-2.948kg (5-6½ lb).
2. **Fur** - Dense and silky, lying loose on body being neither fly-back nor flowing. Length 2.54-3.81cm (1-1½in). Free from woolliness and harshness.
3. **Colour** - Dark Chamois or light sandy colour, down to the skin, faintly ticked with blue. Hairs tinted light at base, medium in middle and darker at tips. Blue shading on flanks, muzzle, edges of ears. Top sides of hind legs beige, pads blue; Forefeet same as body. Tail beige on top, blue under. Belly beige with deeper blue shading.

FAULTS - White or frosty nose. White whiskers; Blue too dark, Brownish or rusty colour.

Beveren

Ring Size	G	Points
1	Colour	35
2	Coat	30
3	Type	35
	Total	100

1. COLOURS:

Blue - Clear shade of light lavender blue, extending to the skin, free from silvering.

White - To be pure white throughout.

Black - Lustrous black throughout, colour extending well down into fur. Undercoat dark blue.

Brown - Medium brown, extending as far down to the skin as possible. Even shade throughout being the dominant feature.

Lilac - An even pink shade of dove colour throughout, carried down to the skin. Too blue a shade to be a fault.

2. **Coat** - Silky, intensely dense, lustrous, length of fur to be not less than 2.54cm (1in) or to exceed 3.8cm (1½in). Density and texture to rank above length. Free from woolliness.

3. **Type** - Long broad back, mandoline shape, haunches well developed feet, straight and strong in bone, head bold and with broad muzzle, profile markedly bent. Eyes of Lilacs to match body colour with ruby glow. Eyes of Whites to be blue, in all other colours to match body colour. Ears fairly long and well furred, carried erect to form a V.

Weight not below 3.62kg (8lb).

DISQUALIFICATION - Decided woolliness.

Blanc de Bouscat

Ring Size H		Points
1	Type	25
2	Head & Eyes	10
3	Ears	15
4	Weight	15
5	Fur	25
6	Colour	10
	Total	100

IMPORTANT - The Blanc de Bouscat must not be judged on weight alone. There must be good type and development. Ear length is important, a length of 15.25cm (6in) is correct for a buck of 4.97kg (11 lb) and a length of 17.80cm (7in) is normal in a buck of 7.028kg (15½lb).

- Type** - General type is robust and somewhat long but with width in proportion to length. An elegant body, firm and well muscled on a relatively fine skeleton for such a large rabbit. In movement it is vigorous, lively and very supple. No dewlap in the buck. A very small one which should be regular and well rounded in the doe. Chest well developed with large well muscled shoulders. The line of the back rises from the nape to form an easy curve finishing at a point in front of the haunches. From this the full round rump seems to be slightly raised. The spine, a little incurved, is rather long but thick, ending in well muscled thighs. Legs are of medium length, strong and straight.
- Head** - The head is strong and broad in the buck, finer in the doe. The forehead is slightly curved in both sexes.
Eyes are those of the Albino, pink with blood vessels easily seen.
- Ears** - The ears are strong, well-furred, thick, carried straight up but falling into a V formation at their extreme tips, which are wide and rounded like a spoon. Ear length is in proportion to the size of the animals, 15.25-18.40cm (6-7¼in).

4. **Table of points for weight (Bucks)**

kg	5.0-5.5	5.5-6.0	6.0-6.5
lb.	11-12	12-13¼	13¼-14½
Points	13	14	15

Table of points for weight (Does)

kg	6.0	6.0- 6.5	6.5-7.0
lb	13¼	13¼-14½	14½-15½
Points	13	14	15

5. **Colour** - Completely snow white without any pigmentation. Guard hairs sprinkled regularly all over the coat give it a brilliant frosty look. Nails pinkish white.
6. **Fur** - Very dense and lustrous, silky, length to be not less than 3.175cm (1¼ in). Roll back coat.

FAULTS - Size a little too small or a little too big. Too long in body due to lack of muscle. Too thickset. Head a little too long or a little too short. Fur too short, lacking in density, lacking lustre.

DISQUALIFYING POINTS - Lack of muscle. Fur short, rough, lacking density. Size too thin or excessive. Irregular type with hollow flanks and angular sides. Lack of muscular development.

Blanc de Hotot

Ring Size G		Points
1	Type	30
2	Head - Eye and Eye Circle	25
3	Ears	5
4	Weight	15
5	Fur	15
6	Colour	10
	Total	100

1. **Type** - General type of body somewhat thickset and rounded. This conformation is apparent in the length of body and in the width and height. The body shape is the result of a good distribution of muscle giving development and compactness. Shape is in proportion to the weight keeping to the thickset or squat look. The dewlap is absent in the male, never well developed or double in the female, where it must be regular and well rounded. The chest is wide, neck short. Shoulders and front well muscled. The line of back rises slowly to terminate in a more pronounced rise and a full and rounded muscled rump. Spine is poker straight, haunches well muscled. Front legs very straight and of medium bone, resting lightly on the ground. Hind legs somewhat thick and well carried.

2. **Head** - The head is strong and somewhat broad in the male, narrower and finer in the female.

Eyes - Eyes are well-opened, brownish black iris, this shade is absolutely uniform, extending all over its surface. The lashes and lids are black. A black and regular band 3-5mm (1/8-1/4in) maximum giving the appearance of fine spectacles around the eye.

3. **Ears** - Well furred, close at their base widening out to the summit terminating in rounded tips. Length in proportion to size of animal, measuring 12.06-13.33cm (4³/₄-5¹/₄ in).

4. **Table of points for weight**

kg	3.5 - 3.75	3.75 - 4.0	4.0 - 4.5	4.5 - 4.75	4.75 - 4.98
lb oz	7.12-8.4	8.4-8.13	8.13-9.15	9.15-10.8	10.8-11.00
Points	13	14	15	14	13

Weight Minimum 3.51kg (7.12lb) Maximum 4.98kg (11.00lb) Ideal 3.96-4.41kg (8³/₄-9³/₄lb).

5. **Fur** - Very dense, soft and lustrous. Guard hairs numerous and obvious giving a frosty appearance characteristic of this breed.

6. **Colour** - No pigmentation whatever on body except for the eye circles. Fur is snow white; nails non-pigmented pinkish white.

FAULTS - Rounded shape and squatness not sufficiently pronounced. Fur a little too short or a little too fine. Guard hairs not sufficiently obvious. Eye circles a little irregular or a little too wide.

DISQUALIFICATIONS - Body too long and thin. Fur lacking density. No guard hairs. Incomplete eye circle or too wide. Lashes and lids not black. Wall eyes. Colour marks on white fur. Black nails.

Blanc de Termonde

Ring Size G		Points
1	Type	20
2	Weight	10
3	Fur	30
4	Head	15
5	Ears	10
6	Colour	10
7	Condition	5
	Total	100

- Type** - Long graceful body gently rising to a well rounded rump which is muscular and firm fleshed. Back is broad and fleshy. Thighs well muscled and firm held close to the body. Finely boned tail long and straight. Dewlap absent in bucks. A medium well rounded dewlap is permissible in does.
- Weight** - Ideal 4.5-5.0kg (10-11lb) Min. 4kg (9lb) Max. bucks 5kg (11lb), does 5.5kg (12lb)

kg	4.0	4.25	4.5-5.5
lb	9.0	9¼	10-12
Points	8	9	10
- Fur** - Medium length, quite dense, silky and smooth, with even, visible guard hairs.
- Head** - The head is lozenge shape. Longer and fine in the doe, more rounded with full cheeks in the buck.
- Ears** - Large, strong, well furred not carried too open, length in proportion to size, rounded at the tips. Ideal length 13.5-15cm (5¼-6in).
- Colour** - Immaculately white. Eyes are ruby red with a pale iris. Nails white.
- Condition** - As per standard condition.

FAULTS - Slight deviation in type. Fur too long. Too heavy in bone. Short head. Rounded head with full cheeks in does.

DISQUALIFICATIONS - Severe deviation in type. Eyes other than ruby. Too short a body. Weight over maximum. Ears over 15cm (6in). Hairs other than white. Falling ears. Any body deformity. Fur not fine and silky i.e. coarse. Coat too woolly, deformities and mutilations, deformation of the teeth, pendant ears, ears tipped over, feet bowed or bent, crooked tail, any discernible illness or disease, blindness or partial blindness, incorrect eye colour, any parasitic infection, much soiling, matted coat, sore pads (where skin is broken or scabbed), any evidence of irregular preparation for exhibition including trimming and dyeing.

British Giant

Ring Size H		Points
1	Weight	10
2	Coat	30
3	Body & Type	40
4	Colour	10
5	Condition	10
	Total	100

1. **Weight** - Minimum weight - Does 6.123kg (13½lb.) Bucks 5.670kg (12½lb)
2. **Coat** - Should be a very dense, full coat 19-25mm (length ¾-1in). Thick to touch, and with enough resistance to resume normal position when stroked backwards. Texture, not too harsh or too soft.
3. **Body & Type** - Should be large; long; roomy, as flat as possible. Broad front and hindquarters well formed. Firm, muscled body.

Head - Should be broad, large, full and bold. Ears to be erect; not to exceed 19cm (7½in) in length.

Eyes - Bold eyes.

4. **Colours**

White - Snow white, as near white as possible. Eye colour red or blue.

Black - Jet black top extending well down the hair shaft with dark blue under colour extending to the skin. Eye colour brown or blue.

Dark Steel Grey - Dark steel grey colour evenly ticked all over the body (head allowed a little darker) with slate blue under colour. The whole topped with black guard hairs. Dark belly preferred but white belly permissible. Eye colour brown.

Blue - Dark blue top colour extending well down the hair shaft. Blue under colour the deeper the better. Eye colour blue, grey or brown.

Brown Grey - Slate blue base colour under a band of yellow/orange topped by a bank of black with light to nut brown tips to the fur. The whole to be topped with black guard hairs. Belly to be white with slate under colour. Eye colour blue/grey or brown.

Opal - Pale blue top colour over well defined band of fawn with slate under colour. Ears laced blue. Belly colour, eye circles and underside of tail to be white with slate under colour. Eye colour blue or brown.

5. **Condition** - The exhibit should be in a perfect state of health, alert and vigorous. Free from soiling of the feet, ears and genitals. The coat should reflect the overall good health of the exhibit.

FAULTS - Bagginess. Excessive fat. Narrow head. Woolly coat. White hairs, any banding of the undercoat. Plus general faults.

DISQUALIFICATIONS - Mandolin or arched shape back. Ears thick or rubber like at base plus general disqualifications.

Californian

Ring Size L		Points
1	Type	55
2	Fur	30
3	Markings & Colour	15
	Total	100

1. **Type** - The body shall be of medium length, with depth of body to approximately equal width. It shall have good depth of hindquarters, well developed shoulders and be plump and firm fleshed.

Head - Broad, carried erect on a short neck and set close to body. Bucks head to be broader than the does.

Ears - Length to be in proportion to size of body, they are to be well set on head, strong at base and carried in an upright position.

Eyes - To be bright and bold, pink in colour.

Feet and Legs - Medium sized bone, rather short preferred. Toe nails to show pigmentation and be as dark as possible.

Tail - Straight and carried erect, length and size in proportion to body.

2. **Fur** - The coat should be coarse enough in guard hair to offer resistance when stroked towards the head, should roll back to it's natural position and lie smooth over the entire body. There should be a dense undercoat, interspersed thickly with decidedly heavier or thicker guard hairs. The same quality fur should carry down the sides and under the stomach. The stomach fur will be shorter but should be dense, avoiding a soft woolly type fur on the stomach and groin area.

3. **Markings and Colour - Normal** - Coloured nose, ears, feet and tail. Points to be dark sepia. Coloured spot on dewlap permissible but confined to dewlap only. Body colour to be pure white. Frosting on u/5 months exhibits must not be penalised.

Chocolate - Standard as normals, except points to be milk chocolate extending to skin.

Blue - Standard as normals, except points to be a clear shade of slate blue extending to skin.

Lilac - Standard as normals, except points to be an even pink shade of dove extending to the skin.

Class Limits:

Adults - Min 3.402kg (7½lb). Desired 4.309kg (9.1 /2lb)

Up to 5 months - Max 3.402kg (7½lb)

Up to 14 weeks - Max 2.608kg (5¾lb)

Anything BELOW the ADULT minimum weight limits and ABOVE the u/5 and u/14 weight limits is a DISQUALIFICATION.

FAULTS - Type, racy, mandolin or any type not plump and firm. e.g. long in neck, flatness over back or bony protruding hips. Long slim head, pinched nose. Ears: heavy, open, spoon shaped, weak ear base. Eyes: faded colour. Feet: long heavy bone, complete absence of pigmentation in one or more toenails. Fur: coat too short, too fine, silky or woolly, lack of density.

DISQUALIFICATIONS - Colour extending onto body of pelt above the junction of the front legs with the body. Colour on rear legs not to extend more than 5.0cm (2in) above the hock joint of leg. Any coloured spot on the white part of pelt (as previously defined). Complete absence of colour on the nose, ears, feet or tail. Definite clean white spot in coloured markings.

Chinchilla

Ring Size D		Points
1	Colour	35
2	Coat	35
3	Type	30
	Total	100

1. **Colour** - To resemble real Chinchilla. The undercolour to be dark slate blue at base, intermediate portion pearl (slate to be definitely wider than pearl) with black narrow line edging, "pearling to be clearly defined", top grey brightly ticked with black hairs, either very even or wavy ticking admissible, neck fur lighter in colour than body but strictly confined to nape, flanks and chest ticked with uniform shade of pearl, slightly lighter than body, eye circles light pearl grey well defined, ears laced with black.
2. **Coat** - Exquisitely soft, fine and dense, not a fly-back coat (free from woolliness) length of fur between one inch and one and a half inches, density and texture to rank over length.
3. **Type** - Moderate length body, fine bone, free from coarseness, head medium size, short neck, small and erect ears. Small dewlap allowed in does.

Weight:	Under 4 months	2.041kg (4½lb)
	Under 5 months	2.494kg (5½lb) maximum
	Adults	3.170kg (7lb)

FAULTS - Drooping or lopped ears, barred feet, odd coloured eyes, brownish band between black narrow line edging and pearl, pearling not extending down rump, woolliness and white toe nails. Exceeding weight limits.

DISQUALIFICATIONS - White patches on body, feet or head, putty nose.

N16

Chinchilla Giganta

Ring Size L		Points
1	Length & Quality of Fur	30
2	Colour	30
3	Feet, Head and Ears	10
4	Type & Size	30
	Total	100

1. **Length and Quality of fur** - The fur must be uniformly dense and silky in texture but with resilience. Desired length not less than 3.175cm (1¼in) but density to count more than mere length.
2. **Colour: Body** - The undercolour shall be a deep blue slate as dark as possible from the skin to at least half the length of the fur (excluding black guard hairs). This to be followed by a clear band of pearl (off white) clearly defined, which shall not exceed a quarter of the length of the fur (excluding black guard hairs) The pearl band to be followed by a distinct black line, finishing upon the surface in alternating blue/grey and silver/white tippings heavily intermixed with longer black-tipped guard hairs to give a well mixed 'mackerel'. Desired top colour considerably darker grey than the Chinchilla rabbit. The colour must be carried well down the sides of the belly, upon which the surface of the fur shall be white, except for the grey/blue groin streaks.
3. **Feet, Head and Ears** - To be the same uniform shade of colour as the body. Eyes to be blue, grey or brown.
Feet to be as free from barring as possible (badly barred feet to be penalised by not more than 5 points). White toenails shall NOT be penalised. Ears to have black lacing.
4. **Type and Size** - Long graceful body, finely boned with head, ears and limbs all in due proportion to the size of the body. Dewlap to be permissible in adult does. Adult bucks to be heavier boned with bold head.

WEIGHT:

Maximum Weights

Adults - 5.44kg (12lb).

Youngsters up to 6 months - Does 3.85kg (8½lb) Bucks 3.62kg (8lb).

Youngsters up to 5 months - Does 3.62kg (8lb) Bucks 3.402kg (7½lb).

Minimum Weights

Adult Doe 4.07kg (9lb).

Adult Buck 3.855kg (8½lb).

FAULTS TO BE PENALISED - Bagginess, moulty coat, bad condition, partially lopped ears, short body, large triangle at neck, wide pearling, short coat on shoulders. 'Rusty' or excessively wide black line. Fly back or woolly coat.

DISQUALIFICATIONS - Failure to comply with any of the above standard weights. Odd eyes. Completely lopped ears. White feet. Ill health.

Continental Giant Coloured

Ring Size J		Points
1	Type	20
2	Weight	10
3	Head & Ears	20
4	Coat	25
5	Colour	20
6	Condition	5
	Total	100

1. **Type** - This is a big solid rabbit giving an impression of power. It should be posed in the Continental style, standing up at the front. The body should be long, minimum length 65cm (26in) with a strong back gently rising to broad, powerful, well-rounded hindquarters. The underline of the body should not show a hare like arch. Front legs are as sturdy as possible, well proportioned and straight.

2. Table of Points

kg	5.5	6.5	7.0 and over
lb	12.4	14.4	15.8
Points	8	9	10

3. **Head & Ears** - The head is big, bold, with well developed cheeks and bright wide open eyes. The large robust, thick ears are held upright, well covered and rounded, ear length should be about 25% of body length, minimum 16cm (7in).

4. **Coat** - Roll back, shiny and dense, 3.5-4cm (1.14-1½in) with very visible guard hairs. The undercoat is abundant and soft, with good density.

5. RECOGNISED COLOURS

Black - A deep solid black carried well down the hair shaft with blue/black undercolour. Eyes hazel or black.

Dark Steel - Dark steel grey merging to a slate blue undercolour, the whole interspersed with black guard hairs. Extreme tips of the fur to be tipped with grey. The mixture to carry well down the sides, flanks and hind feet. Belly colour may be a duller and lighter shade. Ears to match body. Eyes deep hazel.

Light Steel - A medium grey merging to a sandy/brown band with a grey/blue undercolour going down to the skin, the whole interspersed with grey guard hairs. Extreme tips of the fur to be tipped with gold/brown. The mixture to carry well down the sides, flanks and hind feet. Belly colour may be a duller and lighter shade. Ears to match body. Eyes deep hazel.

Agouti - A rich chestnut shade with black ticking over an intermediate orange band and dark slate undercolour. Ears laced black, eye circles, underside of tail and belly white with slate undercolour.

Red Agouti - A rich deep chestnut red shade with black ticking. The undercolour to have an intermediate orange band with a dark slate undercolour. The underside of the tail and the belly to be cream with a slate undercolour.

Opal - Top colour a pale shade of blue over an intermediate fawn band and slate undercolour. Ears laced blue. Eye circles, underside of tail and belly to be white with a slate undercolour.

Yellow - Top colour is a uniform pure yellow, which covers the visible body in an even shade. Colour extends onto the front legs, pelvis and thigh area. Nostrils, eye and jaw line light to cream colour. Belly colour white/cream with yellow groin patches, underside of tail white/cream. Undercolour is white for approximately 6mm and then increases to a yellow shade and finishes intensively under the top coat.

Chinchilla - Colour to resemble real Chinchilla. The undercolour to be dark slate blue at base, intermediate portion pearl (slate to be definitely wider than pearl) with black narrow line edging, "pearling to be clearly defined", top grey brightly ticked with black hairs, either very even or wavy ticking admissible, neck fur lighter in colour than body but strictly confined to nape, flanks and chest ticked with uniform shade of pearl, slightly lighter than body, eye circles light pearl grey well defined, ears laced with black.

Blue - Colour should be uniform slate blue, and to extend as far as possible down the hair shaft. Free of silver ticking, rust stains and white hairs or moult.

6. **Condition** - The exhibit should be in a perfect state of health and bodily condition, free from soiling, particularly on the feet, ears and genital organs. The coat should reflect the overall good health of the exhibit, which should appear alert and vigorous.

FAULTS - Pinched muzzle. Stance a little sagging. Large dewlaps in does; rear feet not parallel to the body; light soiling of the feet, ears and genital organs. Bare pads; white hairs; fur slightly soiled or matted. Long toenails. Lack of vitality.

SERIOUS FAULTS - Body length below 65cm (26in) and ears less than 16cm (7in). Flat body. White nails.

DISQUALIFICATIONS - Deformities and mutilations, deformation of the teeth, pendant ears, ears tipped over, feet bowed or bent, crooked tail, any discernible illness or disease, blindness or partial blindness, incorrect eye colour, any parasitic infection, much soiling, matted coat, sore pads (where skin is broken or scabbed), any evidence of irregular preparation for exhibition including trimming and dyeing.

Continental Giant White

Ring Size J		Points
1	Type	20
2	Weight	10
3	Head & Ears	20
4	Coat	25
5	Colour	20
6	Condition	5
	Total	100

1. **Type** - The general impression is similar to the Coloured Continental Giant. However it can be finer boned and more elegant in appearance. It should be posed in the Continental style, standing up at the front. The body is long, minimum 64cm (26in) with a strong back gently rising to full well rounded hindquarters. The underline of the body should not show a hare like arch. Front legs are strong, well proportioned and straight.

2. **Table of Points**

kg	5.0	6.0	6.5 & over
lb	11	13.4	14.4
Points	8	9	10

3. **Head & Ears** - The head is bold with well developed cheeks and bright wide open eyes. The large robust thick ears are held upright, well covered and rounded. Ear length should be about 25% of the body length, minimum 16cm (7in)
4. **Coat** - Roll back, shiny and dense, 3.5-4cm (1¼-1½in) with very visible guard hairs. The undercoat is abundant and soft, with good density.
5. **Colour** - Immaculate white, eyes pink or blue. Nails un-pigmented.
6. **Condition** - The exhibit should be in a perfect state of health and bodily condition, free from soiling, particularly on the feet, ears and genital organs. The coat should reflect the overall good health of the exhibit, which should appear alert and vigorous.

FAULTS - Pinched muzzle. Stance a little sagging. Large dewlaps in does; rear feet not parallel to the body; slight soiling of the feet, ears and genital organs. Bare pads; fur slightly soiled or matted. Long toenails. Lack of vitality.

SERIOUS FAULTS - Body length below 64cm (26in) and ears less than 16cm (7in) Flat body. Coloured nails or fur.

DISQUALIFICATIONS - Deformities and mutilations, deformation of the teeth, pendant ears, ears tipped over, feet bowed or bent, crooked tail, any discernible illness or disease, blindness or partial blindness, incorrect eye colour, any parasitic infection, much soiling, matted coat, sore pads (where skin is broken or scabbed), any evidence of irregular preparation for exhibition including trimming and dyeing.

Deilenaar

Ring Size E		Points
1	Type	20
2	Fur	20
3	Head & Ears	15
4	Weight	10
5	Top colour & belly colour	15
6	Intermediate & base colour	15
7	Condition	5
	Total	100

1. **Type** - The type is short, thickset and well rounded. Head is carried on an invisible neck. The build is firm, with broad fore and hindquarters. The legs are firm and short.
2. **Fur** - The fur is of sufficient length so that the wavy ticking is shown to full advantage. The fur is close, very dense and lustrous.
3. **Head & Ears** - The head is strongly developed especially in males. The length of the ears should be 10-12cm (4-5in) with the ideal being 11cm (4½in). The ears are strong and erect.

4. **Weight:** 2.5-3.5kg (5½-7¾lb)

kg	2.5	2.75	3-3.4	3.5
lb.oz	5½	6	7¼-9	7¾
Points	6	8	10	9

5. **Top Colour & Belly Colour** - The top colour is warm red brown, with strong wavy ticking. This refers to the entire body except the belly and the inside of the hind legs. Muzzle, jawline and the inside of the ears are tan coloured. The ears are laced with black. The forelegs are heavily ticked, but more regularly ticked than the body because of the shorter fur on them.

The ticking on the back, flanks and head should be wavy, to give a "mackerel" appearance. The triangle on the nape is rusty red. The colour of the belly is cream to sandy red. There is a thin rusty red line dividing the belly and body colours. The chest is warm red brown with slight ticking. The eyes are dark brown, the nails are dark horn and the whiskers are coloured.

6. **Intermediate & Base Colour** - The intermediate colour is rusty red brown. The base colour of the body and chest is slate blue and to be evenly divided. The belly undercolour is creamy except at the rust red groin streaks, where the undercolour is blue.
7. **Condition** - The body should be meaty and muscular, in other words it must feel hard. Flabby, thin or too fat animals are fundamentally wrong. The nails should be regularly cut and clean. The fur should be clean and without matting. The eyes should be bright and twinkling of spirit. The animal should be allowed to show itself resulting in a good posture.

MINOR FAULTS - Slight deviation in type, a few white hairs, weak “mackerel” or poor ticking, banded forelegs, and white whiskers.

SEVERE FAULTS - Severe deviation in type, many white hairs; very weak intermediate and undercolour, wrong top colour, too grey or too yellow; completely even ticking (i.e. lacking “mackerel”), chest completely tan, thin fur, tan belly, and blue undercolour at belly or tail.

Fauve de Bourgogne

Ring Size G		Points
1	Type	20
2	Weight	10
3	Coat	20
4	Head and Ear	15
5	Top Colour	15
6	Undercolour	15
7	Condition	5
	Total	100

1. **Type** – The body is stocky, massive and well rounded, the front and rear width are equal. The chest is fully developed. The neck is short and strong. The front legs are strong and of medium length. A small well formed dewlap is permissible in does.
2. **Table of points for adult weight:**

Kg	3.50	3.8	4.00 – 5.00	Max
Lbs	7¾	8½	8¾–	11.0
Points	8	9	10	
3. **Coat** – The fur is of medium length. The undercoat is dense with good guard hairs.
4. **Head and Ears** – The head is strong, with a broad forehead and mouth and sits close to the body. The ears are strong, standing firm and erect. The ear length is appropriate to the body size, but slightly longer than similar sized breeds.
5. **The Top Colour** - is a uniform russet red. It stretches evenly over the whole body. Jaw line, belly and underside of the tail are somewhat lighter. The loin patches are russet red. Eyes are brown, nails are horn colour.
6. **The Undercolour** – is somewhat lighter than the top colour. It should be pure and rich. The richer the undercolour the better.
7. **Condition** – The exhibit should be in a perfect state of health and bodily condition, free from soiling, particularly on the feet, ears and genital parts. The coat should reflect the overall good health of the exhibit, which should appear alert and vigorous.

FAULTS– General faults including body shape, fur and colour: Slight deviation from the type, inferior consistency of ears, light undercolour, slight paling of colour or lightly interspersed with white or black hairs. Large dewlaps in does, rear feet not parallel to the body, light soiling of feet, ears and genital organs, bare pads, fur slightly soiled or matted, long toenails, lack of vitality. Deviation from the ideal weight.

DISQUALIFICATIONS – Complete deviation from the type, visible neck, strong uneven colour, strongly interspersed with black or white hairs, strong deviation in belly colour; strong impure, or completely washed out undercolour. Outside of weight limit. Deformities and mutilations, deformation of the teeth, pendant ears, feet bowed or bent, crooked tail, any discernible illness or disease, blindness or partial blindness, incorrect eye colour, any parasitic infection, much soiling, matted coat, sore pads (where skin is broken or scabbed), any evidence of irregular preparation for exhibition including trimming and dyeing.

Fox – Silver

Ring Size D		Points
1	Colour	25
2	Markings	20
3	Coat	40
4	Weight & Type	15
	Total	100

1. COLOUR:

Black - To be an even jet-black with undercolour as dark blue as possible extending to the skin.

Blue - To be a medium blue (even and sound) extending to the skin, eyes to be brown, blue or grey.

Chocolate - To be dark chocolate (even and sound) top colour to go down as far as possible. Undercolour to be slate, eyes to be lilac, brown, blue or grey, brown preferred.

Lilac - An even pinkish shade of dove colour throughout carried down to the skin. Eyes to be lilac with a ruby glow.

- Markings** - The chest, flanks and feet to be well and evenly ticked with silver-tipped guard hairs. Any extension of the ticking up the side and/or over the back to be considered a beauty and not a fault. The eye circles as neat as possible, a pea spot in front of the base of each ear, inside of ears, line of jaws, underside of tail and belly, all to be white. Undercolour permissible. Triangle behind ears to be white but as small as possible. Eyes brown or grey.
- Coat** - Dense and exquisitely silky in texture, length to be about 3.175cm (1¼in), but texture and density to be of more importance than length.
- Weight & Type** - Adults to weigh 2.494-3.17kg (5½-7lb), moderate length of body inclined to cobbiness, slightly arched back, broad head of medium size, carried on a short neck; ears of medium length in proportion to the head, carried evenly and rather broad well-furred legs, straight and strong in bone.

FAULTS - Pale undercolour, silver or brindled patches other than the recognised pattern, rusty shade of body colour, excessive dewlap or woolliness.

DISQUALIFICATIONS - Yellow or any other colour tinge in white pattern; deformed bone or pendant ear; putty nose, suffering from colds, speck or wall eye.

GENERAL APPEARANCE - Alert with full glossy coat. Firm in flesh and healthy. The foregoing standard applies to all colours except for the difference in their colours.

Golden Glavcot

Ring Size D		Points
1	Colour	35
2	Texture & Density of Fur	35
3	Type	30
	Total	100

1. **Colour** - A broad band of slate, merging into brown, tipped with light roan, the whole body interspersed with dark brown, nape of neck light brown, flanks and chest ticking off to a uniform shade slightly lighter than the body, under parts of body cream/white with slate under colour. Tail to match body colour on top and belly colour underneath, to be carried in a straight line.
2. **Texture and density of fur** - Very soft, fine and dense. Length of fur about 2.54cm (1in)
3. **Type** - Mandoline shaped and fine boned, dewlap undesirable, ears of medium length and erect, matching the body in colour. Head of medium size, free from coarseness, well carried on short neck, matching bone, upper parts of uniform shade and ticked to the body colour. Feet and legs, straight and fine with blue undercolour. Weight 2.26-2.72kg (5-6lb.). Firm in flesh, bright eyes and glossy coat.

DISQUALIFICATIONS - White patches on body.

FAULTS - Odd coloured eyes to lose 5 points. Drooping or lopped ears 10 points. White patches on feet 10 points. Black or white nose 10 points.

Havana

Ring Size D		Points
1	Shape, Head & Ears	25
2	Eyes	10
3	Legs & Feet	5
4	Chest	5
5	Colour	25
6	Coat	30
	Total	100

1. **Shape** - Compact, cobby body, very short neck and back with markedly broad and rounded loins, wide and well developed hindquarters.

Head - Short, but not coarse, rather broader in bucks.

Ears - Well furred, short, straight and pointed, fine in substance, carried upright and close together.

2. **Eyes** - Same colour as body, glowing ruby red in subdued light.
3. **Legs & Feet** - Short, straight, fine in bone, brown toenails.
4. **Chest** - Well furred and to match body colour.
5. **Colour** - A rich, dark chocolate with a purplish sheen, the colour to go well down the hairs with a pearl-grey undercolour.
6. **Coat** - Approximately 2.54cm (1in) in length, dense and very glossy, fine in texture, lying close to the body.

Weight - 2.722kg (6lb) - A latitude of 0.227kg (1/2lb). Either way permissible.

FAULTS - Dewlap, white hairs, mealy colour, white toenails.

DISQUALIFICATIONS - Excessive dewlap, ill health, excessive amount of white hairs.

Hulstlander

Ring Size D		Points
1	Type & conformation	20
2	Weight	10
3	Coat	20
4	Head	15
5	Ears	15
6	Colour	15
7	Presentation & condition	5
	Total	100

- Type** - The body is short, with well-developed front and hindquarters. The front legs are short and sturdy. The body should be well covered and muscles firm.
- Weight - Scale of points** - outside the weight limits no points to be given.

kg	2.0	2.25	2.4 - 2.7	2.75
lb.oz	4.7	4.15	5.5-5.15	6.1
Points	8	9	10	9
- Coat** - The coat is medium length, thick, with a very dense undercoat. The coat surface should be even without excessively protruding guard hairs. The coat should be smooth and glossy, free from moult or matting.
- Head** - The head is strongly formed, short and broad. The eyes are clear, bright and lively.
- Ears** - The ears are held wide apart with well-rounded tips. Ear length is 8-10cm (3-4in), ideal 9cm (3½in).
- Colour** - The coat is pure white, free from any trace of ivory or yellow from head to toe. The eyes are pale blue. The nails are colourless.
- Presentation and condition** - Conforming to the general standard.

FAULTS - Slight variation from the correct type. Fur slightly too long, too thin, coarse, harsh, woolly. Slight yellowish tinge. Faults common to all breeds.

DISQUALIFICATIONS - Considerable variation from the correct type. Fur noticeably too long, too thin, coarse, or woolly. Wrong coloured, deformities and mutilations, deformation of the teeth, pendant ears, ears tipped over, feet bowed or bent, crooked tail, any discernible illness or disease, blindness or partial blindness, incorrect eye colour, any parasitic infection, much soiling, matted coat, sore pads (where skin is broken or scabbed), any evidence of irregular preparation for exhibition including trimming and dyeing.

N25

Lilac

Ring Size D		Points
1	Colour	40
2	Coat	30
3	Type	30
	Total	100

1. **Colour** - An even pink shade of dove colour throughout carried down to the skin. Eyes to match fur in colour.
2. **Coat** - Exquisitely silky and intensely dense, not a fly back coat.
3. **Type** - Neat, cobby body, broad haunches, short head, ears moderately short and upright, well furred, legs short and straight.

Weight - Adults 2.494 to 3.17kg (5½-7lb).

FAULTS - Too blue a shade, putty or brown nose, white hairs in armpits or on toes and body.

New Zealand White

Ring Size H		Points
1	Coat	40
2	Type & Weight	40
3	Colour	10
4	Condition	10
	Total	100

1. **Coat** - Very dense, thick to the touch with enough resistance to almost resume its normal position. Not too fine and silky, harsh or wiry. Under fur fine soft and dense, interspersed thickly with decidedly heavier guard hairs.
2. **Type and Weight** - Medium length of body, broad and deep throughout with well rounded haunches, front legs to be short, straight and thick. Head bold, broad and rounded, well set in with short neck. Ears in proportion to body, well furred with rounded tips and carried evenly. Small dewlap only permissible in does. Adult buck weight 4.08- 4.989kg (9-11lb). Adult doe 4.53-5.44kg (10-12lb). Overweight not desirable.
3. **Colour** - Bright clean and white, avoiding yellow coats. Eyes to be pink with good depth of colour.
4. **Condition** - The flesh should be firm and solid over the entire body. Coat should give an even glossy appearance.

FAULTS - Weak or pointed ears, narrow shoulders, long, narrow body, excessive dewlap, fur too soft or woolly.

SERIOUS FAULT - Underweight.

DISQUALIFICATIONS - Crooked bone, double dewlaps.

New Zealand Black

See New Zealand White.

Colour - Jet black carried well down undercoat. Dark blue toenails. Brown Tinge to be avoided. Eye colour Brown.

DISQUALIFICATIONS - Crooked bone. Double dewlap. White patches. White toenails.

New Zealand Blue

See New Zealand White.

Colour - Whole of the body to be an even shade of medium blue, free from silvering or mealiness and carried well down to the skin. Head, ears and feet to match body colour. Eyes and toe nails to be dark brown or blue. Evenness and clarity of the colour is more important than the exact shade.

DISQUALIFICATIONS - Crooked bone Double dewlaps. White patches. White toenails.

New Zealand Red

Ring Size E		Points
1	Colour	45
2	Coat	30
3	Type	25
	Total	100

1. **Colour** - Bright golden red or reddish gold with sheen, free from mealiness. Colour carried well down to skin. Shading slightly, lighter on the flanks and to the belly with a reddish tint. Eye circles to be white and as small as possible. Ears, face and feet to match body colour.
2. **Coat** - Dense, harsh in texture, 1.90cm (3/4in) in length, lying close to the body and with plenty of guard hairs.
3. **Type** - Head medium, full and shapely. Ears medium. Fairly broad shoulders. Back slightly arched. Body of medium length and fairly broad. Straight legs with medium bone. Firm flesh. Weight 3.62kg (8lb) in adults but TYPE, proportions and condition to be more important than actual weight.

FAULTS - Slightly dark ear tips; few white hairs; slightly lighter ears, face or feet, white belly colour; slightly darker tops in adults.

SERIOUS FAULTS - Heavily black laced ears; profuse black or white hairs in coat. Black ticking; snipy head; narrow shoulders; weak bone; long and narrow body; excessive dewlap; poor condition; long or soft coat; lack of guard hairs.

DISQUALIFICATIONS - Even silvering over body (as distinct from white hairs) unduly soft coat.

Perlfee

Ring Size E		Points
1	Type & Weight	20
2	Fur	20
3	Colour	40
4	Condition	20
	Total	100

1. **Type & Weight** - Cobby with broad chest and rounded hindquarters. Head well fixed to body of firm flesh with almost invisible neck. Ears strong, well furred and carried erect with rounded tips 10.16-12.7cm (4-5in). Legs straight, medium boned. Eyes greyish blue with ruby glow. Nails horn coloured. Weight 2.4-3.7kg (5½-8lb).

2. **Fur** - Dense with silky smooth appearance and numerous guard hairs.

3. **Colour:**

Top Colour - Greyish blue. Three shades permitted i.e. light, medium and dark, medium shade is preferable. Colour extends evenly all over the body. Eye circles, jaw line, chest and insides of legs are much lighter. Small triangle on nape is brownish in colour. Belly white with blue/grey under fur with a light brown band between belly colour and body colour. Tips of guard hairs are light grey and dark grey. This colour must be clearly seen and give the fur a blue grey pearly look. The pearling must be as regular as possible covering all parts of the body, head, ears, chest, tail and outside of legs.

Under Colour - Grey blue almost two-thirds of fur length, followed by an intermediate colour, brownish in tint. This colour is not to be clearly defined or banded, but must shade into other colours.

4. **Condition** – The exhibit should be in perfect state of health and bodily condition free from all soiling. The coat should reflect the overall good health of the exhibit, which should appear alert, sprightly and vigorous.

FAULTS - Lacking type or density of fur. Nape triangle too big, traces of rustiness, barred legs, white hairs. Absence of belly undercolour. Chest and front feet light. Lacking pearling, white patches, white toenails and other colour eyes.

Pointed Beveren

Ring Size G		Points
1	Colour	50
2	Coat	30
3	Type and Weight	20
	Total	100

1. **Colour** - Body colour a rich lustrous black, undercolour dark blue evenly and moderately ticked all over body and head with white tipped hairs (not white hairs), the part forming the pelt to be one uniform shade throughout, extremities, i.e. nose, ears, feet and tail to match the pelt.
2. **Coat** - To be exquisitely soft, silky and very dense about 3.81cm (1½in) long
3. **Type** - As for Beveren. **Weight** 3.17kg (7lb) upwards.

BLUE POINTED

For the Blue Pointed Beveren the above standard applies except for the substitution in colour of the word 'Blue' for 'Black'. Also recognised are Brown and Lilac.

Siamese Sable

Ring Size D		Points
1	Colour	35
2	Texture & Density of Fur	35
3	Type	10
4	Head	5
5	Ears	5
6	Eyes	5
7	Condition	5
	Total	100

1. COLOUR

Light Siamese Sable - To be rich sepia on back, ears, face outside of legs and upper side of tail, saddle colour to cover the back of the rabbit from head to tail in an unbroken line, then shading off on flanks, sides and chest to a much paler sepia colour. All blending to be gradual, avoiding blotches and streaks and consisting of a soft and varied diffusion of sepia shadings, being lightest on belly.

Medium Siamese Sable - To be very rich sepia on ears, face, back, outside of legs and upper side of tail, the saddle colour to cover the back of the rabbit from head to tail in an unbroken line, then shading off to a considerably paler colour on flanks and belly, the darker face colour to shade off from eyes to jaws to blend with the chest and flanks, all blending to be gradual, avoiding any blotches or streaks and consisting of a soft and varied diffusion of sepia shadings, the dark colour on back to extend from head to tail. The chest to be of the same colour as the flanks and the whole fur to be absolutely free from white hairs. The undercolour to match the surface colour as closely as possible, following the varied shadings throughout.

Dark Siamese Sable - To be very rich dark sepia on ears, face, back, outside of legs and upper side of tail, the saddle colour to cover the back of the rabbit from head to tail in an unbroken line to be carried well down the sides, shading off to a considerably paler colour on flanks and belly, the dark colour to shade of from eyes to jaws to blend with the chest and flanks, all blending to be gradual, avoiding any blotches or streaks and consisting of a soft and varied diffusion of sepia shadings, the dark colour on back to extend from head to tail. The chest to be of the same colour as the flanks and the whole fur to be absolutely free from white hairs. The undercolour to match the surface colour as closely as possible, following the varied shadings throughout.

- 2. Texture and density of Fur** - To be soft and very dense, under fur to be exquisitely silky and extremely full and dense. Length of fur to be from 2.54-3.81cm (1-1½in), but texture and density shall always rank above length of coat, free from woolliness.

3. **Type** - Neat, cobby, with moderate length of body, back slightly arched, free from dewlap, tail carried straight in line with spine. Medium size, Adult weight to be from 2.26-3.17kg (5-7lb); feet and legs to be straight, neat and medium boned.
4. **Head** - Medium size, short and rather broad, free from coarseness, well-carried on short neck.
5. **Ears** - Small, neat, erect and evenly carried, free from white hairs, well furred.
6. **Eyes** - Bright and bold with a distinct ruby glow.
7. **Condition** - Firm in flesh, bright and glossy coat, and bright eyes.

FAULTS TO BE SEVERELY PENALISED - Drooping or lopped ears, short harsh coat; putty nose (white spot on nose), white patches on head and feet; excessive dewlap; paleness of undercolour.

Marten Sable

Ring Size D		Points
1	Colour	35
2	Texture & Density of Fur	35
3	Type	10
4	Head	5
5	Ears	5
6	Eyes	5
7	Condition	5
	Total	100

1. COLOURS:

Light Marten Sable - To be rich sepia on back, ears and face, outside of legs and upper side of tail, saddle colour to cover the back of the rabbit from the head to tail in an unbroken line and then shading off on flanks, sides and chest to a much paler sepia colour. All blending to be gradual, avoiding blotches or streaks and consisting of a soft diffusion of sepia shade, being lightest at the belly line. The chest, flanks, rump and feet to be well ticked with longer white hairs, any extension of white ticking over sides and rump to be an added beauty and not a fault, ears and saddle to be free from white hairs. Light nape of neck to be confined to triangle behind ears - to be small as possible. Eye circle, inside of ears, line of jaw, inside of nostrils, inside feet and legs, belly and underside of tail to be white. General undercolour to match surface colour as closely as possible, following the varied shadings throughout.

Medium Marten Sable - To be very rich sepia on back, ears, face and outside of legs and upper side of tail, the saddle colour to cover the back of the rabbit from head to tail in an unbroken line, shading off to a paler colour on flanks, the dark face colour to shade off to blend with chest and flanks, all blending to be gradual, avoiding any blotches or streaks and consisting of a soft and varied diffusion of sepia shadings, the dark colour on back to extend from nape of neck to tail, the chest, flanks, rump and feet to be well ticked with longer white hairs, any extension of white ticking over sides and rump to be considered an added beauty and not a fault but the ears and saddle to be free of white hairs. The light nape of neck to be confined to triangle behind ears and to be as small as possible. Eye circles, inside of ears, line of jaw, belly and underside of tail to be white. General undercolour to match surface colour as closely as possible following the varied shadings throughout.

Dark Marten Sable - To be very rich dark sepia on back, ears, face and outside of tail, the saddle colour to cover the back of the rabbit from the head to tail in an unbroken line to be well carried down the sides and then shading off to a paler colour on flanks. The dark face colour to shade off

to blend with chest and flanks, all blending to be gradual, avoiding any blotches or streaks and consisting of a soft and varied diffusion of sepia shadings, the dark colour on back to extend from nape of neck to tail.

The chest, flanks, rump and feet to be well ticked with longer white hairs, any extension of white ticking over sides and rump to be considered an added beauty and not a fault, but the ears and saddle to be free of white hairs. The light nape of neck to be confined to triangle behind ears and to be as small as possible, colour to match flanks. Eye circles, inside of ears, line of the jaw, belly and underside of tail to be white. General undercolour to match surface colour as closely as possible, following the varied shadings throughout.

2. **Texture and density of Fur** - To be soft and very dense, under fur to be exquisitely silky and exceedingly full and dense. Length of fur to be from 2.54-3.8cm (1-1½in), but texture and density shall always rank above mere length of coat. Free from woolliness.
3. **Type** - Neat, cobby with moderate length of body, slightly arched back, tail carried in straight line with spine, feet and legs to be straight, neat and of medium bone. Medium size. Adult weight 2.26-3.17kg (5-7lb).
4. **Head** - Medium size, free from coarseness, well carried on short neck.
5. **Ears** - Small, neat erect and evenly carried, free from white ticking, well furred.
6. **Eyes** - Bright and bold with distinct ruby glow.
7. **Condition** - Firm in flesh, bright glossy coat, and bright eyes.

FAULTS TO BE SEVERELY PENALISED - Drooping or lopped ears, short harsh or fly-back coat, putty nose (white spot on nose), white patches on head or feet, excessive dewlap, yellow tinge in white markings, paleness of undercolour.

NB: The main difference in the three colours as sponsored by the club is in width of saddle, in tone and intensity of sepia colours.

NB: Judges should award the appropriate number of points for shadings and penalise those exhibits which lack shadings i.e. are self-coloured.

Sallander

Ring Size L		Points
1	Type	20
2	Weight	10
3	Coat	20
4	Colour	15
5	Colour of markings	15
6	Under and Mid-Colour	15
7	Condition	5
	Total	100

- Type** - The body is thickset and well rounded. The head is set close to the body and is well developed with a broad muzzle. The ears are strong, well developed and furred and of medium length 11-13cm (ideal 12cm) 4-5in. The Eyes are well opened with the iris of a uniform chestnut or dark brown colour. A small well developed dewlap permissible only in the doe. The chest and shoulders should be well developed with the line of the back shapely and ending in a well rounded rump. The feet and legs are straight, strong and of medium length. The nails are dark horn colour.
- Table of points for adult weight:**

kg	Min	2.5 - 3.0	3 - 3.5	3.5 - 4	4 - 4.25	Max
lb.oz	Min	5.8 - 6.9	6.9 - 7.11	7.11 - 8.13	8.13 - 9.6	Max
Points		8	9	10	9	
- Coat** - The fur is very dense and silky, should feel very soft to the touch and should be of medium length. Guard hairs are well developed without being too long.
- Colour of coat** - The base colour is pearl. The guard hairs are blackish brown, the black tips of which cover the whole coat with a veil of pale charcoal colour.
- Colour of markings** - The markings consist of a base coat, shadings and belly colour and includes the whole body. The belly colour and shadings are sooty (charcoal) coloured, this colour extending over the nose, ears, chest, lower half of shoulder, flanks, rump, top of tail, legs and belly. The shading fades towards the upper body and is strongest on the nose, ears and belly. The head from underneath the eyes to the base of the ears is less heavily shaded. The pattern of shading should not contain any gaps or breaks (which often occur on the chest underneath the shoulders). The tip of the tail and the underside of the feet may be lighter coloured.
- Under and mid colour** - The undercolour and mid colour is white.

7. **Condition** - The exhibit should be in a perfect state of health and bodily condition, free from all soiling, particularly on the feet, ears and genital parts. The coat should reflect the overall good health of the exhibit, which should appear alert and vigorous.

FAULTS - Slight deviation from desired type, a few white hairs other than those described above, uneven coat colour, shadings too weak, too strong or broken; head a little too dark or entirely shaded, greyish or dirty white under colour, large dewlap in does; rear feet not parallel to the body, light soiling of feet, ears and genital organs, bare pads, fur slightly soiled or matted, long toenails, lack of vitality.

DISQUALIFICATIONS - Severe deviation from desired type. Too many white or coloured hairs, Coat colour too uneven or too dark, Sooty patches missing, Undercolour too grey, Shading or belly colour too weak or absent, Shading too strong, Head too dark, deformities and mutilations, deformation of the teeth, pendant ears, ears tipped over, feet bowed or bent, crooked tail, any discernible illness or disease, blindness or partial blindness, incorrect eye colour, any parasitic infection, much soiling, matted coat, sore pads (where skin is broken or scabbed), any evidence of irregular preparation for exhibition including trimming and dyeing.

Satin

Ring Size E		Points
1	Coat	40
2	Movement	10
3	Type	20
4	Colour & Pattern	30
	Total	100

1. **Coat** - To have an exquisite Satin-like texture and sheen. Length to be 2.54-3.175cm (1-1¼in), but sheen, texture and density to be more important than length.
2. **Movement** - Coat to roll back when stroked in a reverse direction.
3. **Type** - Adults to weigh 2.72-3.62kg (6-8lb). To have moderate length of body inclined to cobbiness, slightly arched back, broad head of medium size carried on short neck. Ears to be of medium length, carried evenly and in proportion to the head, rather broad and well furred. Legs to be straight and strong in bone.
4. **Colour and pattern** - In all self colours to be carried as far down hair shaft as possible.

FAULTS - Woolliness, white hairs in coloured part of coat, white patches. Barred feet in all Agouti Satins.

DISQUALIFICATION – Fly back coat. Any Satin weighing over 2.72kg (6lbs) in under five month's classes and under 2.72kg (6lbs) and over 3.62kg (8lbs) in adult classes, **MUST BE DISQUALIFIED**.

COLOURS:

Ivory - The more sheen possible to be considered a beauty and must not be penalised by judge, eye colour red or blue.

Black - To be dense black, even in colour. Eye colour brown.

Blue - Any shade of blue is acceptable but must be sound and colour to extend to as near the base as possible. Eye colour to match body colour.

Brown - To be a dark chocolate brown, even in colour. Eye colour brown.

Lilac - To be a pinky dove shade even in colour. Eye colour to match body colour.

Castor - To be rich chestnut shade overall, with black ticking over a dark slate blue undercolour. Edge of ears black, belly and underside of tail white with slate undercolour. Eye colour brown.

Cinnamon - To be a warm shade of brown overall with brown ticking over an intermediate colour of orange, with good definition, over a light blue or lilac undercolour. Edge of ears brown. Belly and underside of tail white with slate or lilac undercolour. Eye colour brown.

Lynx - Orange-shot-silver. Intermediate colour to be bright orange clearly defined on white undercolour. Tips of fur silver. Belly, eye circles, inside ears and underside of jowl white. Chest to match flanks.

SERIOUS FAULTS: In Lynx, bluish tinge on top, blue undercolour.

Opal - Overall colour to be blue-shot-fawn. Blue ticking over an intermediate colour of fawn with good definition over a slate undercolour. Edge of ears blue, belly fur and underside of tail to be white with slate undercolour. Eye colour to match body colour.

Chinchilla - Overall colour to be sparkling blend of black and pearl. Brightly ticked in black over an intermediate colour of pearl with slate undercolour. Pearl to be clearly defined. Edge of ears black. Belly fur and underside of tail to be white with a slate undercolour. Eye colour brown or blue.

Havana - A rich dark chocolate with a purplish sheen, the colour to go well down the hairs, with a pearly grey undercolour. Eye colour brown.

Squirrel - Overall colour to be sparkling blend of blue and white. Brightly ticked in blue over an intermediate colour of pearly white, clearly defined, with a light slate undercolour. Edge of ears blue. Belly fur and underside of tail to be white with light slate undercolour. Eye colour blue.

Orange - Rich orange colour, free from ticking or mealiness. Base of fur white, but orange to be carried well down to skin. Slight shading on flanks. Belly fur white at tip but orange undercolour. Eye colour brown.

Fawn - Medium fawn shade, free from ticking or mealiness. Base of fur white but fawn to be carried well down to skin. Slight shading on flanks. Belly fur white at tip but fawn undercolour. Eye circle pale brown.

Sable (Marten) Colours permitted - Light, Medium and Dark. Light to be rich sepia on back, ears and face, outside of legs and upper side of tail. Saddle to be unbroken from nape to tail and shading on flanks, sides and chest to a paler shade of sepia. All blending to be gradual without patches or streaks. The chest, flanks, rump and feet to be well ticked with longer white hairs. Eye circle, inside of ears, line of jaw, inside of nostrils, inside of feet and legs, belly and underside of tail to be white. Medium: as for Light Sable but, saddle to be very rich sepia, shading off on flanks, sides and chest to a medium sepia shade. Dark: As for light Sable but saddle to be a very rich dark sepia, shading off on flanks, sides and chest to a rich sepia shade. Eye colour brown.

Sable (Siamese) - Colours permitted - Light Medium and Dark: Light to be rich sepia on back, ears and face, outside of legs and upperside of tail. Saddle unbroken from nape to tail then shading on flanks, sides and chest too much paler sepia. All shading to be gradual and free from patches and streaks. Shading to be carried to belly fur, which should be slightly paler than sides. Medium: As for Light Siamese Sable but saddle etc to be very rich sepia, shading off on flanks, sides and chest to a medium sepia shade, palest on belly. Dark: As for light but saddle etc to be very rich dark sepia, shading off on flanks, sides and chest to a rich sepia shade palest on belly. Eye colour brown.

Seal Pointed Satin - Dark sepia brown, on ears, nose, feet and tail. Shading to lighter colour on body, due to hair shaft on body being near white at base of

skin and continuing up to approximately one half the length of the hair shaft. The outer portion of the hair shaft to be somewhat lighter in colour than the marking colour, to give the smoky appearance. Eye colour as normal variety, bright and bold with a distinct ruby glow.

FAULTS - Blotchy colour on body due to moult. Body colour too light, so as to resemble the Californian Satin in body colour. Body colour too dark, so as to lose the decided contrast between the body colour and the marking colour.

DISQUALIFICATIONS - White spots in fur. White nails.

Smoke Pearl (Marten) Saddle to be smoke grey in colour, shading to pearl grey, beige on flanks, sides and chest. Free from patches and streaks. Face ears and outside of legs to match saddle. Chest, flanks rump and feet to be well ticked with longer white hairs.

Eye circle, inside of ears, line of jaw, inside of nostrils, inside of feet and legs, belly and underside of tail to be white. Eye colour as normal variety, bright and bold with a distinct ruby glow.

Smoke Pearl (Siamese) - Saddle, ears, face, outside of legs and upperside of tail to be smoke grey in colour, shading off on flanks, sides and chest to a pearl grey beige. Shading to be gradual and free from patches, and streaks. Shading to be carried to belly fur, which should be slightly paler than sides. Eye colour as normal variety, bright and bold with a distinct ruby glow.

Fox black - To be an even dense black on back and sides, colour extending as far down the hair shaft as possible. Colour of fur near the skin dark blue. Chest, flanks and feet to be well ticked with white guard hairs. Eye circle, inside of ears, line of jaw, inside of nostrils, inside of feet and legs, belly and underside of tail to be white. Eye colour brown.

Blue - As for Fox, but with medium, even blue instead of black and slightly paler undercolour. Eye colour to match body colour.

Chocolate - As for Fox, but with dark chocolate instead of black, lilac undercolour. Eye colour brown.

Lilac - As for Fox, but with pinky dove instead of black, undercolour pale shade of dove. Eye colour to match body colour.

Argente, champagne, bleu, brun and crème - Pattern and colour to follow those of the normal counterparts, but with type and size of standard Satin.

Sooty Fawn - Rich orange fur dusted with black, shading gradually on flanks and haunches. Ears, cheeks, face and feet to match rest of shading. Colour at base of fur may be bluish-white. Eyes brown.

Bronze - As for Sooty fawn, but brown instead of black shadings. Eyes brown.

Beige - As for normal beige standard but with Satin texture and sheen.

VARIETIES NOT INCLUDED ABOVE - To follow the Satin Standard for coat and type with colour or pattern like the Normal variety.

Satin Himalayan

		Points
1	Ears	5
2	Nose	5
3	Front Feet	5
4	Hind Feet	10
5	Tail	5

1. **Ears** - Black to the root
2. **Nose** - Black, even and well up between eyes
3. **Front feet** - Black, markings well up
4. **Hind feet** - Black, markings well up on hocks
5. **Tail** - Neat, black - Eye colour red

Blue Himalayan - Points as above

Rex Himalayan - Points as above

Miniature Satin

Ring Size D		Points
1	Coat	40
2	Movement	10
3	Type	20
4	Colour	30
	Total	100

1. **Coat** -To have an exquisite satin-like texture and sheen.
Length to be cm 2.54 - 3.175 (1 - 1¼ in), but sheen, texture and density to be more important than length.
2. **Movement** - Coat to roll back when stroked in a reverse direction.
3. **Type**- Adults to weigh between 4lbs to 5lbs (1.814 - 2.268 kgs) maximum.
To have moderate length of body inclined to cobbiness, slightly arched back, broad head of medium sized carried on short neck. Ears to be of medium length, carried evenly and in proportion to the head, rather broad and well furred. Legs to be straight and strong in bone.
4. **Colour** - Ivory - The more sheen possible to be considered a beauty. The sheen should carry to the base of the hair shaft. Eye colour red.

FAULTS - Poor ear coverage. Narrow shoulders. Lacking texture and density of coat. Woolliness. Plus general faults and conditions.

DISQUALIFICATION - Fly back coat. Any Miniature Satin weighing over 4lbs in under five months classes and under 4lbs and over 5lbs in adult classes. Plus general disqualifications.

GENERAL FAULTS

Rear feet not parallel to the body, light soiling of feet, ears and genital organs, bare pads, fur slightly soiled or matted, long toenails, lack of vitality.

GENERAL DISQUALIFICATIONS

Deformities and mutilations, deformation of the teeth, pendant ears (apart from lops), ears tipped over, feet bowed or bent, crooked tail, any discernible illness or disease, blindness or partial blindness, incorrect eye colour, any parasitic infection, much soiling, matted coat, sore pads, (where skin is broken or scabbed), any evidence of irregular preparation for exhibition including trimming and dyeing.

Siberian

Ring Size D		Points
1	Colour	30
2	Coat	50
3	Type	15
4	Eyes & Ears	5
	Total	100

1. **Colour** - Must be of same shade all over the rabbit and must present a distinct and even flecking, blending harmoniously with the coat; this to be found on all four colours. The presence of a number of white hairs is a fault, but a few should not handicap unduly.

Black - Black, with blue undercolour, free from ticking, the top colour to be carried down as far as possible.

Blue - Light slate blue, free from ticking, carried right down to the skin.

Brown - Medium brown, without any tendency to chocolate colour, yet free from mealiness or rusty tinge. The top colour should be carried down as far as possible to a pearl grey undercolour.

Lilac - Lilac grey, free from ticking, carried right down to the skin.

2. **Coat** - Roll back or blanket fur. When turned in reverse direction, the fur must give the appearance of having been sheared or pulled and must expose as few guard hairs as possible. Fur to be dense and of exquisite texture with a pronounced glossy sheen, length not to exceed 2.54cm (1in).
3. **Type** - Neat with moderate length of body, slightly arched back, medium boned feet and legs. Head to be of medium size, rather longer than square, free from coarseness and carried on a short neck.
4. **Eyes** - In Blacks, a deep hazel brown, but in Blues, Browns and Lilacs to match colouring.

Ears - 10.16cm (4in) long, erect and well furred.

Weight - 2.26-3.17kg (5-7lb)

FAULTS - Too many white hairs. Presence of long coarse guard hairs. Long ears.

DISQUALIFICATIONS - White patches. Fly-back coat. Ticking.

Smoke Pearl

Ring Size D		Points
1	Colour	45
2	Texture & Density of Fur	40
3	Type, Head, Eyes & Condition	15
	Total	100

1. **Colour in the Marten Type** - The saddle to extend from the nape to tail, to be smoke in colour, shading to pearl grey beige on flanks and chest. Head ears, feet and upper side of tail to match saddle as near as possible. Nose flash permitted, but to be as small as possible. Chest, flanks, rump and feet to be well ticked with longer white hairs, the light nape of the neck to be confined to the triangle behind the ears and to be as small as possible. Eye circles, inside the ears, line of jaw, inside nostrils, inside of legs and feet, belly and underside of tail and triangle to be white. In the **Siamese** type: Saddle to be smoke in colour. Shading to pearl grey beige on flanks, chest and belly and to be totally free from white throughout. Head, ears and legs to match saddle as near as possible. In both types, all shading to be gradual avoiding blotches or streaks. General undercolour to match surface colour as closely as possible, following the varied shadings throughout, except that in the Marten type the colour under white belly fur should be fawn.
2. **Texture and density of Fur** - To be soft and very dense, under fur to be exquisitely silky and exceedingly full and dense. Length of fur to be about 2.54cm (1 in), but, texture and density shall always rank above mere length.
3. **Type** - Neat with moderate length of body, slightly arched back, tail carried in a straight line with spine, feet and legs to be straight, neat and of medium bone. Medium size, Adult weight 2.26-3.17kg (5-7lb).

Head - Medium size, rather long than square, but not snipy, free from coarseness, well carried on short neck.

Ears - Small, erect and evenly carried, free from white ticking, well furred.

Eyes - Bright and bold with distinct ruby glow.

Condition - Firm in flesh, bright glossy coat, and bright eyes.

FAULTS - Drooping or lopped ears, short, harsh or fly-back coat, lack of dense undercoat, white patches, excessive dewlap, paleness of undercolour, white feet, putty nose, any trace of tan in white, excessive nose flash in Marten type.

Squirrel

Ring Size D		Points
1	Colour	35
2	Coat	35
3	Type & Weight	30
	Total	100

1. **Colour** - The undercolour to be dark slate blue at base, intermediate portion pearl (slate to be definitely wider than pearl) with blue narrow line edging. Pearling to be clearly defined, top grey brightly ticked with blue hairs, either even or wavy ticking admissible; neck fur lighter in colour than body but strictly confined to nape, flanks and chest ticked with uniform shade of pearl, slightly lighter than body, eye circles light pearl-grey, well defined, ears laced with blue.
2. **Coat** - Exquisitely soft, fine and dense, not a fly-back coat (free from woolliness), length of fur between 2.54-3.81cm (1-1½ in), density and texture to rank over length.
3. **Type** - Moderate length body, fine bone, free from coarseness, head medium size, short neck, small and erect ears. Small dewlap allowed in does.

Weight - Under 4 month's 2.041kg (4½lb.)
Under 5 months 2.49kg (5½lb) maximum
Adults 2.47 - 3.06kg (5½-6¾lb)

FAULTS - Drooping or lopped ears, barred feet, odd coloured eyes, brownish band between blue narrow line edging and pearl, pearling not extending down rump, woolliness, and white toe nails.

DISQUALIFICATIONS - White patches on body, feet or head, putty nose. Exceeding weight limits.

Sussex

Ring Size E		Points
1	Type	30
2	Coat	30
3	Colour	40
	Total	100

1. **Type** - Compact, cobby with a broad chest, well-muscled shoulders, strong well-rounded rump. Legs medium bone, short. Ears medium length, strong and upright. Head short, broad in bucks, and narrower in does.
2. **Coat** - About 2.54cm (1in) long, very dense and silky with strong guard hairs.
3. **Colour** - General: This is a shaded rabbit shading to be same depth of colour as body, confined to face, ears, legs, belly and underside of tail.
Gold - Cream undercolour, deepening evenly to red-gold top colour, lightly ticked with cream and milk chocolate. Shading milk chocolate. Eyes reddish brown.
Cream - Pale cream undercolour deepening to rich pinkish beige top colour, lightly ticked with lilac and pale cream. Shading Lilac. Eyes lilac grey.

Weight - Adults maximum 3.84kg (8½lb, ideal weight 3.39kg (7½lb)

FAULTS - Dark shading, shading on upper body, a lot of white hairs.

DISQUALIFICATIONS - Black or blue shading, white markings.

Swiss Fox

Ring Size E		Points
1	Type	25
2	Weight	10
3	Fur	25
4	Guard Hairs	10
5	Colour	20
6	Condition	10
	Total	100

1. **Type** - Strong vigorous well rounded body. Head bold with well developed muzzle, invisible neck.

Ears – Strong structure , erect and corresponding in length to body size.

Chest - Wide, well muscled, as are the shoulders.

Legs - Medium length and strong.

Pelvis - Well developed, rounded of medium height. Belly, is tucked up but hidden by the belly fur.

2. **Weight** - 2.5 to 4kg (5½-8¾lb).
3. **Fur** - Long, dense, plenty of undercoat and guard hairs. Length of coat not longer than 7cm (2¾in) and not less than 4cm. (1¾ in) Ideal 5-6cm (2½ in).
4. **Guard Hairs** – Strong and even 6-7cm.
5. **Colour** - All colours are recognised. On Whites, Blacks and Havana's, colour is even and intense with lustrous sheen. In Blues top is a pastel blue with matching undercolour. Eyes of whites to be blue or pink. In all other cases eyes to match body colour.
6. **Condition**- Clean well nourished and groomed.

FAULTS - Bad colour, woolly fur.

DISQUALIFICATIONS - Too light in coat, rusty or patchy in colour. Fur length over 7cm (2¾in) or under 4cm (1¾in). White nails on coloured rabbits and white whiskers on all coloured self rabbits except white. wall or odd coloured eyes. Any resemblance to Angora, i.e. furnishings on ear tips, excessive woolliness.

Thuringer

Ring Size L	Points
1 Type	20
2 Weight	10
3 Coat	20
4 Colour of Coat	15
5 Colour of Markings	15
6 Under and Mid Colour	15
7 Condition	5
Total	100

- Type** - The body is thickset and well rounded. The head set close to the body and is well developed with a broad muzzle. The ears are strong and well developed and furred and of medium length 11-13cm, (4-5in), ideal 12cm (4½in). The eyes well opened with the iris of uniform chestnut or dark brown colour. A small well developed dewlap is permissible only in the doe. The chest and shoulders should be well developed, with the line of the back shapely, ending in a well rounded rump. The feet and legs straight, strong and of medium length. The nails are dark horn coloured.
- Table of points for adult weight:**

kg	Min	2.5 - 3.0	3.0 - 3.5	3.5 - 4.0	4.0 - 4.25	Max
lb.oz	Min	5.8 - 6.9	6.9 - 7.11	7.11 - 8.13	8.13 - 9.6	Max
Points		8	9	10	9	
- Coat** - The fur is very dense and silky, should feel very soft to the touch and should be of medium length. Guard hairs are well developed without being too long.
- Colour of Coat** - The general colour is a yellow ochre or buff (chamois leather) colour. The guard hairs are bluish black colour, which produce a haze of pale charcoal colour.
- Colour of Markings** - The markings consists of a general colour, shadings and belly colour. The belly colour and shadings are sooty (or charcoal) coloured, this colour extending over the nose, ears, chest, lower half of shoulders, flanks, rump, top of tail, legs and belly. The shading fades towards the upper body and is strongest on the nose, ears and belly; the head from underneath the eyes to the base of the ears is less heavily shaded. The Pattern of shading should not contain any gaps or breaks (which often occur on the chest underneath the shoulders). The tip of the tail and the underside of the feet may be lighter coloured.
- Under and Mid Colour** - The undercolour and mid colour is a deep rich yellow as far down the fur as possible.

7. **Condition** - The exhibit should be in a perfect state of health and bodily condition, free from all soiling, particularly on the feet, ears and genital parts. The coat should reflect the overall good health of the exhibit, which should appear alert and vigorous.

FAULTS - Slight deviation from desired type, a few white hairs; uneven coat colour, shadings too weak, too strong or broken, head a little too dark or entirely shaded, colour too far from the required chamois shade, coloured patches too light, under and mid-colour not sufficiently extended, large dewlap in does; rear feet not parallel to the body, light soiling of feet; ears and genital organs, bare pads, fur slightly soiled or matted, long toenails, lack of vitality.

DISQUALIFICATIONS - Severe deviation from desired type. Too many white or coloured hairs, coat colour too uneven or too dark, coat colour too smoky or too yellow - lacking the true chamois shade, bluish black patches missing, undercolour blue on the back, deformities and mutilations, deformation of the teeth, pendant ears, ears tipped over, feet bowed or bent, crooked tail, any discernible illness or disease, blindness or partial blindness; incorrect eye colour, any parasitic infection; much soiling, matted coat, sore pads (where skin is broken or scabbed), any evidence of irregular preparation for exhibition including trimming and dyeing.

Vienna Coloured

Ring Size H		Points
1	Type	25
2	Weight	10
3	Coat & Lustre	35
4	Head & Ears (included in points for type)	
5	Top Colour	15
	Under Colour	10
6	Condition	5
	Total	100

- Type** - The cylindrical body has well developed muscles. The chest is broad and deep. The back follows the same line from the nape to a well muscled rump. The legs are strong and of medium length. The head is bold and prominent. The ears are of good substance, well furred, rounded, and carried erect and of a length (approximately 13cm (5in), which is in good balance with the body.
- Table of Points for adult weight**

kg	Min -	3.5	3.65	3.8	3.95	4.1	4.2	- 4.75	to	5.25	Max
lb	Min -	7.11	8.1	8.6	8.11	9.1	9.4	- 10.8	to	11.9	Max
Points		5	6	7	8	9	10			9	
- Coat** - The coat is exquisitely dense, silky and lustrous and rich in guard hairs. It is of medium length 3.2-3.8cm (1¼ to 1½ in)
- Head & Ears** - see **Type**
- COLOURS:**

Blue - Top Colour - The dark slate blue is uniform over the whole body, very lustrous. The belly colour and under tail may be less lustrous. The eyes are grey-blue, the nails are dark and the whiskers match the body colour.
Undercolour is a slightly lighter blue and extends to the roots of the fur.
Black - Top Colour - To be an even jet-black.
Undercolour - As dark blue as possible extending to the skin. Eyes hazel or black.

Agouti - Top colour - A rich chestnut shade with black ticking over an intermediate orange band. Ears laced black, eye circles, underside of tail and belly white with slate undercolour.
- Condition** - The exhibit should be in a perfect state of health and bodily condition, free from all soiling, particularly on the feet, ears and genital parts. The coat should reflect the overall good health of the exhibit, which should appear alert and vigorous.

FAULTS - Uneven colour, large dewlaps in does, rear feet not parallel to the body, light soiling of feet, ears and genital organs, bare pads, fur slightly soiled or matted, long toenails, lack of vitality.

DISQUALIFICATIONS - Colour very light or very dark, deformities and mutilations of the teeth; pendant ears, ears tipped over, feet bowed or bent, crooked tail, any discernible illness or disease, blindness or partial blindness, incorrect eye colour, any parasitic infection, much soiling, matted coat, sore pads, (where skin is broken or scabbed), any evidence of irregular preparation for exhibition including trimming and dyeing.

Vienna White

Ring Size H		Points
1	Type	25
2	Weight	10
3	Coat & Lustre	35
4	Head & Ears (included in points for type)	
5	Colour	25
6	Condition	5
	Total	100

1. **Type** - The cylindrical body has well developed muscles. The chest is broad and deep. The back follows the same line from the nape to a well muscled rump. The legs are strong and of medium length. The head is bold and prominent. The ears are of good substance, well furred, rounded, carried erect and of a length (approximately 13cm (5in) which is in good balance with the body.

2. **Table of points for adult weight:**

kg	Min	3.5	3.65	3.8	3.95	4.1	4.2 - 4.75	to	5.25	Max
lb	Min	7.11	8.1	8.6	8.11	9.1	9.4 - 10.8	to	11.9	Max
Points		5	6	7	8	9	10		9	

3. **Coat** - The coat is exquisitely dense, silky and lustrous and rich in guard hairs. It is of medium length 2.5-3.2cm (1-1¼ in)
4. **Head & Ears** - See **Type**.
5. **Colour** - The pure white colour is uniform over the whole body, very lustrous. The belly colour and under tail may be less lustrous. The eyes have a pure pale blue iris, the nails are white and the whiskers match the body colour.
6. **Condition** - The exhibit should be in a perfect state of health and bodily condition, free from all soiling, particularly on the feet, ears and genital parts. The coat should reflect the overall good health of the exhibit, which should appear alert and vigorous.

FAULTS - Large dewlaps in does, rear feet not parallel to the body, light soiling of feet, ears and genital organs, bare pads, fur slightly soiled or matted, long toenails, lack of vitality.

DISQUALIFICATIONS - Deformities and mutilations of the teeth, pendant ears, ears tipped over, feet bowed or bent, crooked tail, any discernible illness or disease, blindness or partial blindness, incorrect eye colour, any parasitic infection, much soiling, matted coat, sore pads, (where skin is broken or scabbed), any evidence of irregular preparation for exhibition including trimming and dyeing.

Wheaten

Ring Size D		Points
1	Colour	35
2	Coat	30
3	Type	30
4	Condition	5
	Total	100

1. **Colour** - Top Colour - Wheaten (the fawn or pale yellow colour of wheat), carrying sheen. Shaded lighter on flanks, rump and chest. Undercolour - Wheaten, carried as far to the base as possible. Eye circles, inside ears, undertail, under feet, inside of legs, belly and underside of jowl to be white. Nails to be of light horn colour. Eyes to be dark hazel with a ruby glow.
2. **Coat** - Dense with a silky texture, 2.54cm (1in) in length, lying close to the body with numerous guard hairs. When stroked the 'reverse' way the coat should 'roll back' to the original position.
3. **Type** - Fine boned. Short head, ears moderately short, strong and upright. Adult weight to be 2.49-3.17kg (5½-7lb).
4. **Condition** - The exhibit should be in a perfect state of health and bodily condition, free from all soiling, particularly on the feet, ears and genital parts. The coat should reflect the overall good health of the exhibit, which should appear alert and vigorous.

FAULTS - Too dark or uneven colour, large dewlap in does, rear feet not parallel to the body, light soiling of feet, ears and genital organs, bare pads, fur slightly soiled or matted, long toenails, lack of vitality.

DISQUALIFICATIONS - Weight exceeding 3.17kg (7lb). Wall eyes and eyes of incorrect colour, deformities and mutilations, deformation of the teeth, pendant ears, ears tipped over, feet bowed or bent; crooked tail, any discernible illness or disease, blindness or partial blindness, incorrect eye colour, any parasitic infection, much soiling, matted coat, sore pads, (where skin is broken or scabbed), any evidence of irregular preparation for exhibition including trimming and dyeing.

Wheaten-Lynx

Ring Size D		Points
1	Colour	35
2	Coat	30
3	Type	30
4	Condition	5
	Total	100

All features are as for the Standard Wheaten, with the exception of colour, which is as follows:-

1. **Colour** - To be orange-shot-silver. Intermediate colour to be bright orange, clearly defined on white undercolour. Tips of fur silver. Eye circles, undertail, under feet, inside of legs, belly and underside of jowl to be white.

FAULTS - Bluish tinge on top, blue undercolour. Barred front feet. Excessive dewlap and faults for all breeds. Large Dewlaps in does, rear feet not parallel to the body, light soiling of feet, ears and genital organs, bare pads, fur slightly soiled or matted, long toenails, lack of vitality.

DISQUALIFICATIONS - Weight exceeding 3.17kg (7lb). Wall eyes and eyes of incorrect colour: Deformities and mutilations, deformation of the teeth, pendant ears, ears tipped over, feet bowed or bent, crooked tail, any discernible illness or disease, blindness or partial blindness, incorrect eye colour, parasitic infection, much soiling; matted coat, sore pads (where skin is broken or scabbed), any evidence of irregular preparation for exhibition including trimming and dyeing.

Marburger Feh

Ring Size G		Points
1)	Type and body shape	20
2)	Weight	10
3)	Fur	20
4)	Head and ears	15
5)	Top colour and eveness	15
6)	Undercolour	15
7)	Condition	5
	Total	100

1. **Type and body shape** – The body is slightly stock and has very fine limbs. Back line even, well rounded in the rear. Legs are short and strong.

2. **Table of points for weight**

Kg	2.25	2.50	2.75 - 3.25	Maximum
lbs oz	4.15	5.8	6.1 - 7.2	
Points	8	9	10	

3. **Fur** – The fur is very dense, fine and even in the guard hairs. The ears are well furred.

4. **Head and ears** – The head is short and broad and close to the body. The ears are of strong structure and correspond in their length to the body size.

5. **Top colour and eveness** – The top colour is a delicately toned light blue which appears to be covered with a brownish veil. The belly colour is slightly matt. The colour extends evenly over the whole body. At the short haired parts (head, ears and legs) the brownish tinge appears to be stronger. The eyes are blue/grey with a ruby glow. Nails are horn colour.

6. **Undercolour** – The undercolour is similar in tone to the top colour but is not sharply edged from it.

7. **Condition** – See general faults

MINOR FAULTS - General minor faults including body shape, fur and colour; and colour somewhat dark or light top colour, slightly interspersed coat, frosty tinge, weak veil, light or slightly interspersed undercolour.

MAJOR FAULTS - General major faults including body shape, fur and colour; pale silvery or too dark coat, complete absence of brownish veil, completely light, dark or heavily interspersed undercolour, white undercolour at the skin.

Schwarzgrannen

Ring Size E		Points
1)	Type and body shape	20
2)	Weight	10
3)	Fur	20
4)	Top Colour and Ticking	15
5)	Eveness	15
6)	Undercolour	15
7)	Condition	5
	Total	100

- Type and body shape** – The body is stocky and barrel shaped, well rounded in the rear. Front and rear are of same width, backline is even. The short head is furnished with a wide forehead and sits close to the body. Ears are of a strong structure, and correspond in their length to the body size. Legs are of medium length and strong.
- Table of points for weight**

Kg	2.00	2.25	2.50 – 3.25	Maximum
lbs oz	4.6½	4.15	5.8 – 7.2	
Points	8	9	10	
- Fur** – The fur is extremely dense in the undercoat with even fly back guard hairs.
- Top Colour and Ticking** – The top colour on the whole body is pure white. The black ticking is above the top coat, evenly distributed over the whole of the body with the exception of the wild colour zones like the belly, underside of the tail, the inside of the legs, the jowl line, eye circles and the neck part. The eyes are dark brown, nails horn colour.
- Eveness** – The whole impression resembles a white top colour without colour deviations with a sooty veil, or lighter to medium intensity.
- Undercolour** – The undercolour on the whole body, is pure white, the undercolour of the upper side of the tail is not taken into consideration.
- Condition** – See general faults

MINOR FAULTS - General minor faults including body shape, fur and colour; slightly stretched type, long or clumps of uneven guard hairs, dark interspersed wild colour zones, slightly patchy impure top colour, slightly darker veil, undercolour slightly bluish or sooty tinge, slightly dark interspersing of the undercolour.

MAJOR FAULTS - General major faults including body shape, fur and colour; missing or differently coloured guard hairs, strong interspersed wild colour zones with black, strong colour deviation of the top coat, distinctively dark sooty veil, grey to blue grey or strongly dark interspersed undercolour.

Sussex Marten

Ring Size E

		Points
1	Type	30
2	Coat	30
3	Colour	40
	Total	100

1. **Type** – Compact, cobby with a broad chest, well muscled shoulders, strong well rounded rump. Legs medium bone, short. Ears medium length, strong and upright. Head short and broad in bucks, narrower in does.
2. **Coat** – About 2.5cm (1in) long, very dense and silky with strong guard hairs.
3. **Colour** – General. This is a shaded rabbit, shading to the same depth of colour as the body, confined to face, ears, and legs; recognised in two colours Gold and Cream.

Gold - Cream undercolour, deepening evenly to a red-gold top colour, lightly ticked with cream and milk chocolate. Shading milk chocolate. Eyes reddish brown.

Cream - Pale cream undercolour deepening to a rich pinkish beige top colour, lightly ticked with lilac and pale cream. Shading lilac, eyes lilac/grey.

The shading and body colours are overlaid with the Marten pattern:- Eye circle, inside of ears, line of jaw, inside of nostrils, inside feet and legs, belly and underside of tail to be white or ivory. The belly colour ends between the legs both along the sides and across the chest. Belly undercolour and groin streaks to be a pale version of the body colour, can be late developing in young rabbits. Chest, flanks, rump and feet may be ticked with white hairs but the white ticking should not extend over the saddle. Nape of the neck to be paler version of the body colour. Nose, flash/putty nose not permitted.

Weight - Adult maximum 3.84kg (8 ½ lbs) Ideal weight 3.39kg (7.1/2 lbs).

FAULTS - Dark shadings, shadings on the upper body, a lot of white hairs on the saddle.

DISQUALIFICATIONS – Black or blue shadings, white toes, any other white markings not expected in the Marten pattern.

Rex Breeds - General Standard

Ring Size E		Points
1	Fur	40
2	Type	20
3	Colour and/or Markings	40
	Total	100

1. **Fur** - To be approximately 1.27cm (1/2in) in length. Fine silky texture free from harshness and woolliness, intensely dense, smooth and level over the whole body, of a lustrous sheen, firm and plush like character, devoid of projecting guard hairs.
2. **Type** - Well proportioned and graceful carriage, the body sloping gently up to well rounded quarters set on strong hind legs, medium bone. Head bold and broad, ears erect and to be in proportion to body, dewlap should not be excessive, eyes and toenails should preferably match the body colour.
3. **Colour and/or markings** - As below.

Weight - The ideal weight for a standard Rex to be 2.72- 3.62kg (6-8lb). There is no weight disqualification for any age Standard Rex rabbit.

FAULTS - Narrow wedge head, drooping ears, bare pads (patches on feet being devoid of fur, but skin unbroken), thin or curly triangle, white hairs on coloured coats (not to be confused with ticking on ticked varieties), lack of density, harsh, wavy, woolly or curly coats, adults over or under weight. Black hairs in blues and lilacs. For additional faults see individual standards.

DISQUALIFICATIONS - Ill health, putty nose, white patches, crooked legs, excessive dewlap, sore pads (where skin is broken or scabbed), specked, wall or odd coloured eyes.

NB - The above is the general standard for all Smooth-coated Rex with the exception of the Smoke Pearl Rexes, details of which are given below.

Self Rex

Ermine - As pure a white as possible, creamy or yellow tinge a fault.

Black - A rich, lustrous blue-black, dark blue undercolour carried down to skin, brown tinge a fault. White toenails a serious fault. Any deformity a disqualification.

Blue - Clear, bright, medium shade of blue (not lavender) throughout, from tip of fur to skin, extending to, but not including toe-nails, brown tinge a fault. Toe nails to be horn colour, white toenails to be treated as a minor fault.

Havana:

Shape - Compact, cobby body, very short neck, broad and rounded loins, wide and well developed hindquarters.

Head - Medium size, but not coarse, broader in bucks.

Ears - Well furred, small and straight carried upright.

Eyes - Same colour as body, glowing ruby red in subdued light.

Legs - Short, straight, fine in bone, brown toenails.

Colour - A rich, dark chocolate, the colour to go well down the hairs with a pearl-grey undercolour.

DISQUALIFICATIONS - Excessive dewlap, ill health, excessive amount of white hairs.

Lilac - A pinkish dove grey, undercolour to be as near as possible to top colour. Brown or bluish tinge a fault.

Nutria - Rich golden brown, colour to go well down the fur, pearl-grey undercolour to reach the skin, rusty tinge a fault.

Shaded Rex

Smoke Pearl - Siamese

Colour - Saddle smoke grey shading to pearl-grey on flanks, chest and belly. Shading to be gradual, avoiding blotches or streaks. Head, ears, feet and upper side of tail to match saddle as nearly as possible. General undercolour to match shading as closely as possible. Eyes to be bright and bold with a distinct ruby glow. Toe nails horn coloured.

FAULTS – White hairs. Pale or white undercolour.

Sable Siamese - Saddle an even rich sepia brown, shading gradually to a chestnut on flanks and slightly paler on belly. Head, ears, legs and upperside of tail to match saddle. Chest to match flanks. Top colour to go well down fur, undercolour to match shadings throughout. Eye colour to reflect a distinct rich ruby glow.

FAULTS – Streaks or blotches, white hairs, rusty tinge, white toe nails.

Seal Siamese - Head and body even rich dark sepia, shading only slightly paler on lower flanks, chest and belly. Top colour to go well down fur, undercolour to match shadings throughout. Eye colour to reflect deep bluish black.

FAULTS - Uneven top colour, rusty tinge, white toenails, white hairs, blue undercolour a serious fault.

Tortoiseshell - Top colour (saddle) to be rich orange, going well down towards the skin and lightly tipped with brown. Ears, muzzle, feet, belly and underside of tail to be rich blue-black, gradually shading into the body colour on face, flanks and haunches.

FAULTS - Excessive extension of the shadings into the body colour.

Tan Pattern Rex

Sable Marten - Saddle an even rich sepia brown, shading gradually to a rich chestnut on flanks. Belly, eye circles, inside of ears, underside of jowl and nape triangle to be white. Colour to go well down the fur, undercolour to match shadings throughout. White ticking on legs is permissible. Eye colour to reflect a distinct rich ruby glow.

FAULTS - Streaks or blotches on top colour, white hairs on outside of ears and on body, white ticking on flanks or rump, rusty tinge, white toe-nails.

Seal Marten - Head and body an even rich dark sepia shading only slightly paler on flanks. Belly, eye circles, inside of ears, underside of jowl and nape triangle to be white. Colour to go well down fur, under colour to match shadings throughout. Eye colour to reflect deep bluish black.

FAULTS - Uneven top colour, rusty tinge. White hairs on outside of ears and on body, white ticking on flanks or rump. White toenails, blue undercolour a serious fault.

Smoke Pearl Marten – Saddle smoke grey shading to a pearl grey on flanks and chest. Shading to be gradual, avoiding blotches or streaks. Head, ears, feet and upperside of tail to match saddle as nearly as possible. General undercolour to match shading as closely as possible. Eye circles, inside the ears, line of jaw, inside nostrils, inside of legs and feet, belly and underside of tail to be white. Eyes to be bright, bold and with a distinct ruby glow. Toe nails horn colour.

FAULTS – White hairs on outside of ears and body. Pale or white undercolour.

Orange - Saddle deep rich orange carried well down the sides gradually shading to white belly. Colour to go well down the fur, undercolour to be white. Eye circles, inside of ears and underside of jowl white. Chest to match flanks. Face and outside ears to match saddle.

FAULTS - Ticking, barred front feet and brownish tinge, blue undercolour.

Fox Black - Colour jet black, colour to go well down the fur. Undercolour to be as dark blue as possible. Eye circles, inside of ears, line of jaws, underside of tail and belly, to be pure white with undercolour permissible. Triangle to be white and as small as possible. White ticking on chest, flanks and rump desirable. Ticking may protrude beyond fur as in Normal Foxes such ticking to be white tipped hairs and to be considered an added beauty. Eyes brown or grey, brown preferred.

Blue - A medium blue (even and sound) extending to the skin. Eyes blue or grey, blue preferred.

Chocolate - Dark chocolate (even and sound) top colour going down the fur as far as possible. Undercolour slate. Eyes brown or lilac, brown preferred.

Lilac - Pinky-dove top colour (even and sound). Undercolour dove. Eyes lilac with ruby glow.

FAULTS - Rusty tinge, pale undercolour.

DISQUALIFICATIONS - Yellow or other colour in white pattern.

Fawn - Saddle to be a bright golden fawn without any trace of creaminess, carried well down the flanks, gradually shading to a white belly. Colour to extend down the fur as far as possible, clearly defined white undercolour. Eye circles, inside of ears, jowl and underside of tail to be white. Chest to match flanks, head, outside of ears and forepaws to match saddle.

FAULTS - White hairs, blue sheen on coat, bluish or brownish tinge on points, bluish undercolour, very heavily barred feet.

OTTER - Body colour to be lustrous black uniform throughout, with slate blue undercolour, to reach skin.

Markings - The belly and underside of the chin and tail to be creamy white with blue or white undercolour, to be divided from the body colour by a distinct border of tan. Nostrils and nape of neck to be tan. Eye circles and inside ears to be fawn. Chest to be a mixture of black and tan, merging with the main body colour. The fore feet on the front shall be predominantly black; the tan border between belly and flanks shall be continued down to the hind feet

Blue - A clear, bright, medium shade of blue (not lavender) throughout, from tip of fur to skin.

Chocolate - A rich dark chocolate with a purplish sheen, the colour to go well down the hairs with a pearly grey undercolour, eye colour brown.

Lilac - A pinky dove grey throughout from tip of fur to skin, bluish tinge a fault.

FAULTS - Brown or rusty tinge to the body colour. White or tan hairs other than in the patterned areas. Grey belly surface colour.

TAN - Body colour to be black, blue, lilac or chocolate and to go down as far as possible. Belly, chest, eye circles, inside ears, underside of jowl and triangle to be rich tan, face and outside ears to match body colour.

FAULTS - Rusty body colour, tan hairs on back and outside ears.

DISQUALIFICATIONS

White patches in armpits.

Agouti Pattern Rex

Castor - Colour to be dark rich chestnut brown. Intermediate colour to be rich orange clearly defined on a dark slate blue undercolour. Orange and dark slate blue to be equal (half and half). Fur to be lightly tipped with black, chest to match flanks. Head, outside of ears, upperside of tail to match body colour, ears laced black. Belly and underside of tail white with dark slate blue undercolour.

MINOR FAULTS - Barred front feet.

FAULTS - Heavy black top, greyness on haunches.

Chinchilla - Fur to be lightly tipped with black and white giving a sparkling chinchillated effect. Intermediate colour to be near white clearly defined on a dark slate blue undercolour, with a minimum of one-third and a maximum of one-half near white. Chest to match flanks. Head, outside ears and upperside of tail to be chinchillated grey. Ears laced black. Eye circles, inside ears and underside of jowl pearl grey. Belly and underside of tail white.

FAULTS - Rusty tinge, heavy black top.

Cinnamon - Colour to be bright golden tan. Intermediate colour to be light orange clearly defined on a blue undercolour. Fur lightly tipped with brown. Chest to match flanks. Head, outside ears, upperside of tail to match body colour. Ears laced brown. Belly and underside of tail white with blue/grey undercolour. Blue and orange bands to be approximately equal in width.

FAULTS - Fawny tinge, dark blotches barred front feet.

Lynx - Colour to be orange shot silver. Intermediate colour to be bright orange clearly defined on white undercolour. Tips of fur silver. Belly, eye circles, inside ears and underside of jowl white. Chest to match flanks.

SERIOUS FAULTS - Bluish tinge on top, blue undercolour. Barred front feet.

Opal - Top colour pale shade of blue with a layer of golden tan between it and the slate-blue undercolour. General effect to be blue-shot-tan. Belly, eye circles, inside ears and underside of jowl white. Slate and golden tan bands to be approximately equal in width, belly colour to be white with blue under.

FAULTS - Barred front feet.

Other Colour Rex

DALMATIAN - Coat is not pigmented that is to say white all over. The pattern consists of numerous little coloured patches covering the body, head and ears.

Bi-colour - White body with pattern of one colour only.

Tri-colour - White body with pattern of two colours (i.e. black patches and fawn patches).

The patches can only be, black, blue, brown, orange or fawn. The colour to be carried down as far as possible. Eyes and ears to match appropriate colours; solid ears, eye circles and smut are allowable.

FAULTS - Not enough coloured patches.

DISQUALIFICATIONS - Pattern too much like that of a butterfly or an English i.e. with a resemblance of a saddle.

HARLEQUIN/MAGPIE - (Japanese), English, Dutch etc - all marked varieties to resemble nearly as possible the normal varieties in colouring and marking plus the Rex coat and type.

HIMALAYAN

Colour and Markings - Points to be dark seal. Body colour pure white. Nose marking to go well up between eyes into whisker beds and to be large and egg shaped. Ears, dense colour to roots. Front feet markings well up legs and down to toes. Hind foot markings well up hocks and down to toes and tail dense to roots.

FAULTS - Creamy or yellow tinge in body colour, eye stains.

OTHER COLOUR POINTS RECOGNISED - Blue or Chocolate.

COLOUR NOT RECOGNISED - Marten type points in all colours.

SILVER SEAL - Colour jet black, silvering to be evenly distributed over the whole of the body, giving a sparkling effect, including ears, tail, feet and chest. Undercolour dark blue to skin.

SATIN REX

Ring Size E		Points
1	Coat	50
2	Colour and/or Pattern	30
3	Type	20
	Total	100

1. **Coat - smooth coated Rex** - To be approximately 1.27cm (1/2in) in length with fine Satin-like texture and sheen, very dense and free from projecting guard hairs.

Rough coated Rex - Coat to carry a curl or wave, even over the whole body. The fur on ears, feet and tail may be straight.

2. **Colour and/or pattern** - Any colour or pattern recognised in the British Rabbit Council Rex Standards.
3. **Type** - As set out for normal textured Rex.

Rough Coated Rex

ASTREX

Ring Size E		Points
1	Fur	40
2	Colour	40
3	Type	20
	Total	100

1. **Fur** - To be dense and tightly curled over the whole surface of the body, free from projecting guard hairs. Ears, feet and tail to be well covered with plain fur.
2. **Colour** - Any recognised Rex Colour.
3. **Type** - Well proportioned and graceful carriage, the body sloping gently up to well rounded quarters set on strong hind legs. Medium bone. Head bold and broad, ears erect and to be in proportion to body, dewlap should not be excessive, eyes and toenails should preferably match the body colour.

Weight Adult - 2.72-3.62kg (6-8lb)

FAULTS - Narrow wedge head, drooping ears, bare hocks (patches on hind feet being devoid of fur, but skin unbroken), barred feet, bare and thin triangle, white hairs on coloured coats (not to be confused with ticking), lack of density. Adults outside the weight limits to be a fault, not a disqualification.

DISQUALIFICATIONS - Ill health, putty nose, white patches, crooked legs, excessive dewlap, sore hocks (where skin is broken or scabbed), specked, wall or odd coloured eyes.

Rough Coated Rex

OPOSSUM

Ring Size E		Points
1	Fur	40
2	Colour	40
3	Type	20
	Total	100

1. **Fur** - Dense and soft, carried at right angles to body, without fall, so that from whichever aspect the pelt may be viewed it has the same appearance. The undercoat to be approximately 2.54cm (1in) in length. The whole body to be covered with fine white-tipped curly hairs (the curling to go down to the undercolour). Bright with lustrous sheen.
2. **Colour** - Any recognised colour, such colour to go right down to the skin. Head, ears, feet and tail not to be silvered. Head to be smooth as with ordinary Rex. Silvering to be composed of white tipped hairs. White hairs to constitute a fault.
3. **Type** - Compact body, small neat ears, not thin, and carried erect and well covered. Well rounded quarters, without tendency to squareness. Legs straight, medium bone, eyes and toenails to match body.

Weight - Adults 2.72-3.62kg (6-8lb)

FAULTS - Narrow wedge head, drooping ears, bare hocks (patches on hind feet being devoid of fur, but skin unbroken), barred feet, bare and thin triangle, white hairs on coloured coats (not to be confused with ticking) lack of density. Adults outside the weight limit to be a fault not a disqualification.

DISQUALIFICATIONS - Ill health, putty nose, white patches, crooked legs, excessive dewlap, sore hocks (where skin is broken or scabbed), specked wall or odd coloured eyes.

NOTE - Rough coated varieties are not eligible to compete in classes provided for smooth coated Rex and unless special provisions are made, must be classed as AOV.

Mini Rex

Ring Size B		Points
1	Fur	40
2	Type	20
3	Colour and/or Markings	40
	Total	100

The Mini Rex Rabbit is intended to be a standard Rex Rabbit in every way possible except in size. It should be judged to the general standard of the Rex in all its various colours with the exception of size, which shall be approximately half that of the Standard Rex.

1. **Fur** - To be approximately 1.27cm (½in) length. Fine silky texture, free from harshness and woolliness, intensely dense, smooth and level over the whole body, of a lustrous sheen, firm and plush-like character and devoid of projecting guard hairs.
2. **Type** - Well proportioned and graceful carriage with the body sloping gently up to well rounded quarters, set on strong hind legs. Medium bone. Head bold and broad, ears erect and to be in proportion to the body, dewlap should not be excessive, eyes and toenails should preferably match body colour.
3. **Colour and/or markings** - As for Standard Rex

Weight - Adults to weigh between 1.700-2.041kg (3¾- 4½lb)

Under 5 months to weigh up to 1.700kg (3¾lb)

FAULTS - As for Standard Rex.

DISQUALIFICATIONS - As for Standard Rex, weights outside the limits above and any rabbit with Netherland Dwarf features.

Mini Rex - Broken Blanket Pattern

Ring Size B		Points
1	Fur	40
2	Type	20
3	Colour	20
4	Pattern	20
	Total	100

1. **Fur** - As per Mini Rex Standard.
2. **Type** - As per Mini Rex Standard.
3. **Colour and markings** – All colours as per Mini Rex Standard.
4. **Broken Blanket Pattern** - To have both ears completely coloured; white at base is permissible. Colour to head to match the body colour, which can be solid or with eye circles and with evenly balanced nose spots. The body markings to be blanket pattern with colour starting at the shoulders and continuing over the back, sides and hind quarters. Preference should always be given to an evenly balanced pattern. Colour spots are permissible to the legs, belly and to the genital area. Total colouration should not be more than 60% of the body area, this cannot be less than 40% white.

FAULTS - More than 60% colour and less than 40% white to the body is to be considered a major fault. Not enough colour to cover shoulders, back, side and hind quarters. Pattern on head/muzzle not balanced.

WEIGHT - As per Mini Rex Standard.

DISQUALIFICATIONS – As per Mini Rex Standard and an absence of colour to either ear, i.e. white patches.

Mini Rex Broken Pattern

A good example of a blanket pattern - 60% colour & 40% white

